


Anti-Alpha B Crystallin antibody [1B6.1-3G4] ab13496

★★★★★ [5 Abreviews](#) [55 References](#) [画像数 3](#)

製品の概要

製品名	Anti-Alpha B Crystallin antibody [1B6.1-3G4]
製品の詳細	Mouse monoclonal [1B6.1-3G4] to Alpha B Crystallin
由来種	Mouse
アプリケーション	適用あり: WB, Flow Cyt, IHC-P
種交差性	交差種: Cow, Human 交差が予測される動物種: Mouse, Rat, Chicken 
免疫原	Full length native protein (purified) corresponding to Cow Alpha B Crystallin. Database link: P02510
ポジティブ・コントロール	Recombinant Bovine alpha B Crystallin Protein.
特記事項	<p>The Life Science industry has been in the grips of a reproducibility crisis for a number of years. Abcam is leading the way in addressing this with our range of recombinant monoclonal antibodies and knockout edited cell lines for gold-standard validation. Please check that this product meets your needs before purchasing.</p> <p>If you have any questions, special requirements or concerns, please send us an inquiry and/or contact our Support team ahead of purchase. Recommended alternatives for this product can be found below, along with publications, customer reviews and Q&As</p>

製品の特性

製品の状態	Liquid
保存方法	Shipped at 4°C. Upon delivery aliquot and store at -20°C. Avoid freeze / thaw cycles.
バッファー	pH: 7.2 Preservative: 0.09% Sodium azide Constituents: 49.91% PBS, 50% Glycerol (glycerin, glycerine)
精製度	Protein G purified
ポリ/モノ	モノクローナル
クローン名	1B6.1-3G4
アイソタイプ	IgG1

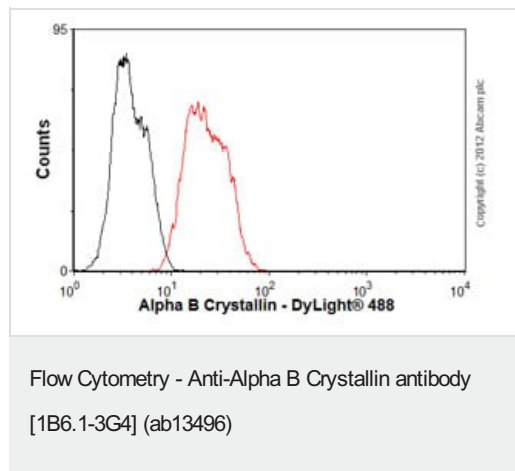
The Abpromise guarantee **Abpromise保証は、** 次のテスト済みアプリケーションにおけるab13496の使用に適用されます
 アプリケーションノートには、推奨の開始希釈率がありますが、適切な希釈率につきましてはご検討ください。

アプリケーション	Abreviews	特記事項
WB	★★★★★ (1)	Use at an assay dependent concentration. Detects a band of approximately 20 kDa (predicted molecular weight: 21 kDa).
Flow Cyt		Use at an assay dependent concentration. ab170190 - Mouse monoclonal IgG1, is suitable for use as an isotype control with this antibody.
IHC-P	★★★★★ (1)	Use at an assay dependent concentration.

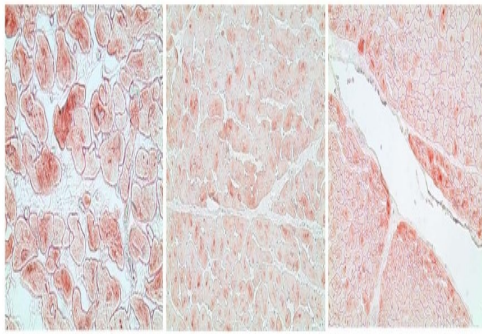
ターゲット情報

機能	May contribute to the transparency and refractive index of the lens.
組織特異性	Lens as well as other tissues.
関連疾患	Defects in CRYAB are the cause of myofibrillar alpha-B crystallin-related (MFM-CRYAB) [MIM:608810]. A neuromuscular disorder that results in weakness of the proximal and distal limb muscles, weakness of the neck, velopharynx and trunk muscles, hypertrophic cardiomyopathy, and cataract in a subset of patients.
配列類似性	Belongs to the small heat shock protein (HSP20) family.
細胞内局在	Cytoplasm. Nucleus. Translocates to the nucleus during heat shock and resides in sub-nuclear structures known as SC35 speckles or nuclear splicing speckles.

画像

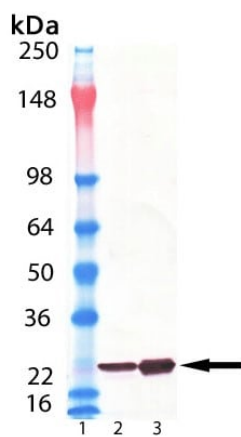


Overlay histogram showing SH-SY5Y cells stained with ab13496 (red line). The cells were fixed with 4% paraformaldehyde (10 min) and then permeabilized with 0.1% PBS-Tween for 20 min. The cells were then incubated in 1x PBS / 10% normal goat serum / 0.3M glycine to block non-specific protein-protein interactions followed by the antibody (ab13496, 1µg/1x10⁶ cells) for 30 min at 22°C. The secondary antibody used was DyLight® 488 goat anti-mouse IgG (H+L) (**ab96879**) at 1/500 dilution for 30 min at 22°C. Isotype control antibody (black line) was mouse IgG1 [ICIGG1] (**ab91353**, 2µg/1x10⁶ cells) used under the same conditions. Acquisition of >5,000 events was performed. This antibody gave a positive signal in SH-SY5Y cells fixed with 80% methanol (5 min)/permeabilized with 0.1% PBS-Tween for 20 min used under the same conditions. This image was generated using the ascites version of the product.



Immunohistochemistry (paraffin sections) analysis of Human heart tissue
labelling Alpha B Crystallin with ab13496 at 20 µg/mL

Immunohistochemistry (Formalin/PFA-fixed paraffin-
embedded sections) - Anti-Alpha B Crystallin
antibody [1B6.1-3G4] (ab13496)



All lanes : Anti-Alpha B Crystallin antibody [1B6.1-3G4] (ab13496)
at 1/1000 dilution

Lane 2 : a-Crystallin (bovine), (native)

Lane 3 : aB-Crystallin (bovine), (native)

Predicted band size: 21 kDa

Observed band size: 20 kDa

Western blot - Anti-Alpha B Crystallin antibody
[1B6.1-3G4] (ab13496)

Please note: All products are "FOR RESEARCH USE ONLY. NOT FOR USE IN DIAGNOSTIC PROCEDURES"

Our Abpromise to you: Quality guaranteed and expert technical support

- Replacement or refund for products not performing as stated on the datasheet
- Valid for 12 months from date of delivery
- Response to your inquiry within 24 hours
- We provide support in Chinese, English, French, German, Japanese and Spanish
- Extensive multi-media technical resources to help you
- We investigate all quality concerns to ensure our products perform to the highest standards

If the product does not perform as described on this datasheet, we will offer a refund or replacement. For full details of the Abpromise, please visit <https://www.abcam.co.jp/abpromise> or contact our technical team.

Terms and conditions

- Guarantee only valid for products bought direct from Abcam or one of our authorized distributors