

Anti-Alpha B Crystallin antibody [1A7.D5] ab74441

1 References [画像数 2](#)

製品の概要

製品名	Anti-Alpha B Crystallin antibody [1A7.D5]
製品の詳細	Mouse monoclonal [1A7.D5] to Alpha B Crystallin
由来種	Mouse
特異性	Does not cross-react with α A-crystallin, β L-crystallin, β H-crystallin, γ -crystallin, HSP25, HSP27 or HSP47 proteins.
アプリケーション	適用あり: WB, ICC/IF
種交差性	交差種: Human
免疫原	Full length native protein (purified) corresponding to Human Alpha B Crystallin.
ポジティブ・コントロール	WB: AlphaB crystallin protein. ICC/IF: SK-N-BE cells.
特記事項	<p>The Life Science industry has been in the grips of a reproducibility crisis for a number of years. Abcam is leading the way in addressing this with our range of recombinant monoclonal antibodies and knockout edited cell lines for gold-standard validation. Please check that this product meets your needs before purchasing.</p> <p>If you have any questions, special requirements or concerns, please send us an inquiry and/or contact our Support team ahead of purchase. Recommended alternatives for this product can be found below, along with publications, customer reviews and Q&As</p>

製品の特性

製品の状態	Liquid
保存方法	Shipped at 4°C. Upon delivery aliquot and store at -20°C. Avoid freeze / thaw cycles.
バッファー	Preservative: 0.09% Sodium azide Constituents: 50% Glycerol (glycerin, glycerine), PBS
精製度	Protein G purified
ポリ/モノ	モノクローナル
クローン名	1A7.D5
アイソタイプ	IgG1

アプリケーション

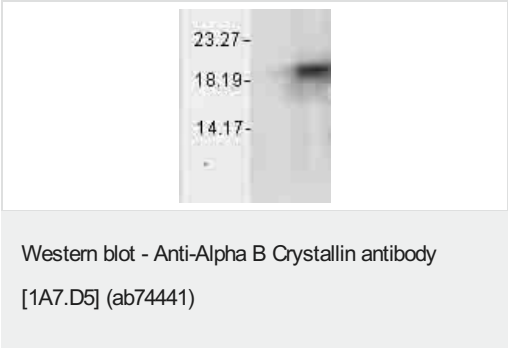
The Abpromise guarantee **Abpromise保証は、**次のテスト済みアプリケーションにおけるab74441の使用に適用されます
アプリケーションノートには、推奨の開始希釈率がありますが、適切な希釈率につきましてはご検討ください。

アプリケーション	Abreviews	特記事項
WB		1/2000. Predicted molecular weight: 20 kDa.
ICC/IF		1/100.

ターゲット情報

機能	May contribute to the transparency and refractive index of the lens.
組織特異性	Lens as well as other tissues.
関連疾患	Defects in CRYAB are the cause of myofibrillar alpha-B crystallin-related (MFM-CRYAB) [MIM:608810]. A neuromuscular disorder that results in weakness of the proximal and distal limb muscles, weakness of the neck, velopharynx and trunk muscles, hypertrophic cardiomyopathy, and cataract in a subset of patients.
配列類似性	Belongs to the small heat shock protein (HSP20) family.
細胞内局在	Cytoplasm. Nucleus. Translocates to the nucleus during heat shock and resides in sub-nuclear structures known as SC35 speckles or nuclear splicing speckles.

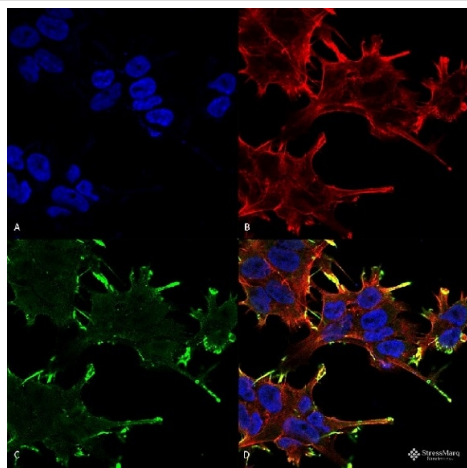
画像



All lanes : Anti-Alpha B Crystallin antibody [1A7.D5] (ab74441) at 1/100 dilution

Lane 1 : AlphaA crystallin protein
Lane 2 : AlphaB crystallin protein

Predicted band size: 20 kDa
Observed band size: 20 kDa



Immunocytochemistry/ Immunofluorescence - Anti-Alpha B Crystallin antibody [1A7.D5] (ab74441)

4% formaldehyde-fixed SK-N-BE cells stained for Alpha B Crystallin (green) using ab74441 at 1/100 dilution in ICC/IF.

Secondary Antibody: Goat Anti-Mouse ATTO 488 at 1/100 dilution for 60 min at room temperature. Counterstain: Phalloidin Texas Red F-Actin stain; DAPI (blue) nuclear stain at 1/1000, 1/5000 for 60min room temperature, 5min room temperature. (A) DAPI (blue) nuclear stain (B) Phalloidin Texas Red F-Actin stain (C) ab74441 (D) Composite.

Please note: All products are "FOR RESEARCH USE ONLY. NOT FOR USE IN DIAGNOSTIC PROCEDURES"

Our Abpromise to you: Quality guaranteed and expert technical support

- Replacement or refund for products not performing as stated on the datasheet
- Valid for 12 months from date of delivery
- Response to your inquiry within 24 hours
- We provide support in Chinese, English, French, German, Japanese and Spanish
- Extensive multi-media technical resources to help you
- We investigate all quality concerns to ensure our products perform to the highest standards

If the product does not perform as described on this datasheet, we will offer a refund or replacement. For full details of the Abpromise, please visit <https://www.abcam.co.jp/abpromise> or contact our technical team.

Terms and conditions

- Guarantee only valid for products bought direct from Abcam or one of our authorized distributors