

Anti-alpha Adducin (phospho S726) antibody ab53093

[2 References](#) [画像数 4](#)

製品の概要

製品名	Anti-alpha Adducin (phospho S726) antibody
製品の詳細	Rabbit polyclonal to alpha Adducin (phospho S726)
由来種	Rabbit
アプリケーション	適用あり: WB, IHC-P, ICC/IF
種交差性	交差種: Human
免疫原	Synthetic peptide corresponding to Human alpha Adducin aa 650-750 (phospho S726). Swiss-Prot #: P35611/P35612
ポジティブ・コントロール	WB: HeLa cells. IHC-P: Human Brain and Human Breast carcinoma tissue. ICC/IF: HeLa cells.
特記事項	<p>The Life Science industry has been in the grips of a reproducibility crisis for a number of years. Abcam is leading the way in addressing this with our range of recombinant monoclonal antibodies and knockout edited cell lines for gold-standard validation. Please check that this product meets your needs before purchasing.</p> <p>If you have any questions, special requirements or concerns, please send us an inquiry and/or contact our Support team ahead of purchase. Recommended alternatives for this product can be found below, along with publications, customer reviews and Q&As</p>

製品の特性

製品の状態	Liquid
保存方法	Shipped at 4°C. Store at -20°C. Stable for 12 months at -20°C.
バッファー	pH: 7.40 Preservative: 0.02% Sodium azide Constituents: 50% Glycerol (glycerin, glycerine), 0.87% Sodium chloride, PBS
精製度	Without Mg+2 and Ca+2 Immunogen affinity purified
特記事項 (精製)	ab53093 was affinity purified from rabbit antiserum by affinity chromatography using epitope specific phosphopeptide. The antibody against non phosphopeptide was removed by chromatography using non phosphopeptide corresponding to the phosphorylation site.
ポリモノ	ポリクローナル
アイソタイプ	IgG

アプリケーション

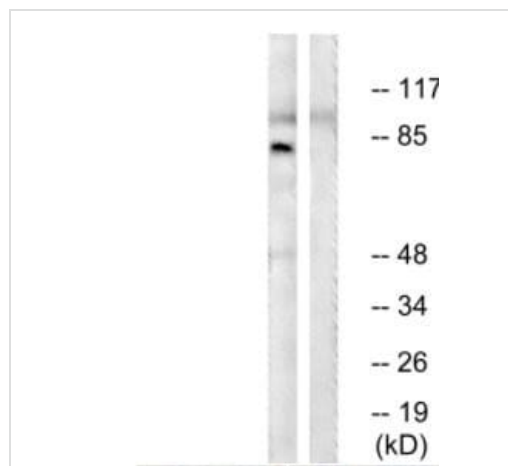
The Abpromise guarantee Abpromise保証は、次のテスト済みアプリケーションにおけるab53093の使用に適用されず
アプリケーションノートには、推奨の開始希釈率がありますが、適切な希釈率につきましてはご検討ください。

アプリケーション	Abreviews	特記事項
WB		1/500 - 1/1000. Detects a band of approximately 81 kDa (predicted molecular weight: 81 kDa).
IHC-P		Use at an assay dependent concentration.
ICC/IF		1/100 - 1/500.

ターゲット情報

機能	Membrane-cytoskeleton-associated protein that promotes the assembly of the spectrin-actin network. Binds to calmodulin.
組織特異性	Expressed in all tissues. Found in much higher levels in reticulocytes than the beta subunit.
配列類似性	Belongs to the aldolase class II family. Adducin subfamily.
ドメイン	Each subunit is comprised of three regions: a NH2-terminal protease-resistant globular head region, a short connecting subdomain, and a protease-sensitive tail region.
細胞内局在	Cytoplasm > cytoskeleton. Cell membrane.

画像



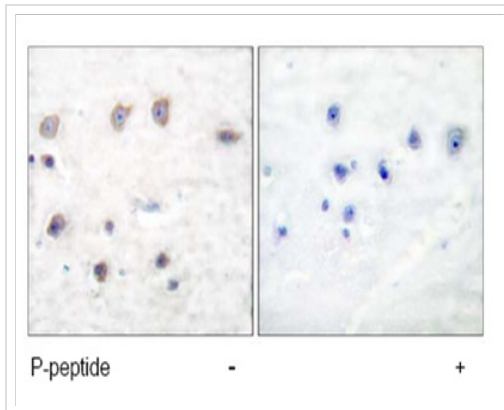
All lanes : Anti-alpha Adducin (phospho S726) antibody (ab53093)
at 1/500 dilution

Lane 1 : HeLa cells treated with Forskolin (40nM 30 mins)

Lane 2 : HeLa cells treated with Forskolin (40nM 30 mins) and
blocked with the phospho peptide.

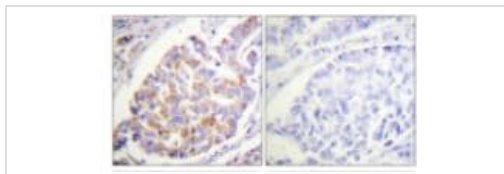
Predicted band size: 81 kDa

Western blot - Anti-alpha Adducin (phospho S726)
antibody (ab53093)



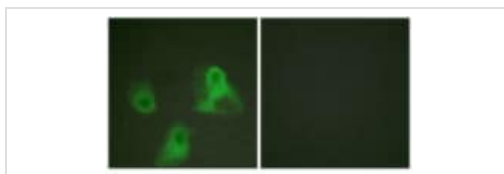
Immunohistochemistry (Formalin/PFA-fixed paraffin-embedded sections) - Anti-alpha Adducin (phospho S726) antibody (ab53093)

labelled with ab53093, at 1/50 dilution, staining alpha Adducin in paraffin embedded human brain tissue sections by Immunohistochemistry. Tissues had either been treated with (right image) or without (left image) the phosphopeptide.



Immunohistochemistry (Formalin/PFA-fixed paraffin-embedded sections) - Anti-alpha Adducin (phospho S726) antibody (ab53093)

Immunohistochemistry analysis of paraffin-embedded human breast carcinoma, using ab53093 at 1/50. The picture on the right is blocked with the phospho peptide.



Immunocytochemistry/ Immunofluorescence - Anti-alpha Adducin (phospho S726) antibody (ab53093)

Immunocytochemistry analysis of HeLa cells, using ab53093 at 1/100 dilution. The picture on the right is blocked with the phospho peptide.

Please note: All products are "FOR RESEARCH USE ONLY. NOT FOR USE IN DIAGNOSTIC PROCEDURES"

Our Abpromise to you: Quality guaranteed and expert technical support

- Replacement or refund for products not performing as stated on the datasheet
- Valid for 12 months from date of delivery
- Response to your inquiry within 24 hours
- We provide support in Chinese, English, French, German, Japanese and Spanish
- Extensive multi-media technical resources to help you

- We investigate all quality concerns to ensure our products perform to the highest standards

If the product does not perform as described on this datasheet, we will offer a refund or replacement. For full details of the Abpromise, please visit <https://www.abcam.co.jp/abpromise> or contact our technical team.

Terms and conditions

- Guarantee only valid for products bought direct from Abcam or one of our authorized distributors