


Anti-alpha Adducin antibody ab51130

★★★★★ **1 Abreviews** **11 References** 画像数 3

製品の概要

製品名	Anti-alpha Adducin antibody
製品の詳細	Rabbit polyclonal to alpha Adducin
由来種	Rabbit
特異性	There are 2 isoforms of alpha adducin on the Uniprot protein database page for mouse. The antibody immunogen has high alignment to isoform 1: Isoform 1 80 kDa 100% Isoform 2 69 kDa 30% The aduccin protein is made up of 4 subunits, including the alpha beta and gamma subunits (according to the Uniprot page), Alignment of the immunogen with the mouse beta adducin: http://www.uniprot.org/uniprot/Q9QYB8 isoform 1 100% isoform 2 30% isoform 3 100% And with the mouse gamma adducin: http://www.uniprot.org/uniprot/Q9QYB5 isoform 1 92% Isoform 2 92% The antibody has not been specifically tested for detection of the other subunits, however according to the high alignments, the antibody is likely to detect several isoforms of these beta and gamma subunits.
アプリケーション	適用あり: IHC-P, WB, ICC/IF
種交差性	交差種: Human 交差が予測される動物種: Mouse, Rat 
免疫原	Synthesized non-phosphopeptide derived from human alpha Adducin around the phosphorylation site of serine 726 (T-P-S ^P -F-L).
特記事項	<p>The Life Science industry has been in the grips of a reproducibility crisis for a number of years. Abcam is leading the way in addressing this with our range of recombinant monoclonal antibodies and knockout edited cell lines for gold-standard validation. Please check that this product meets your needs before purchasing.</p> <p>If you have any questions, special requirements or concerns, please send us an inquiry and/or contact our Support team ahead of purchase. Recommended alternatives for this product can be found below, along with publications, customer reviews and Q&As</p>

製品の特性

製品の状態	Liquid
保存方法	Shipped at 4°C. Store at -20°C. Stable for 12 months at -20°C.
バッファー	pH: 7.40 Preservative: 0.02% Sodium azide Constituents: 0.87% Sodium chloride, 50% Glycerol (glycerin, glycerine), PBS

	Without Mg+2 and Ca+2
精製度	Immunogen affinity purified
ポリ/モノ	ポリクローナル
アイソタイプ	IgG

アプリケーション

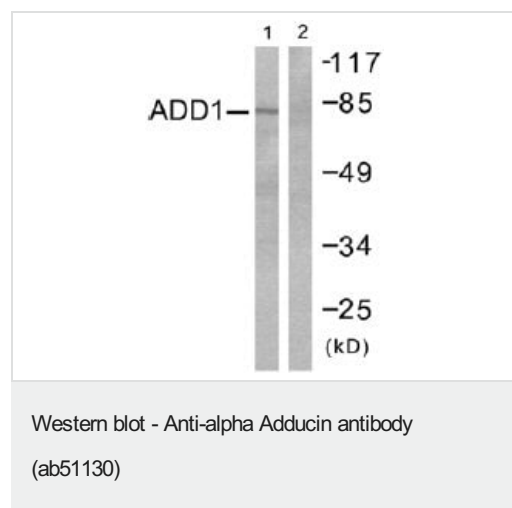
The Abpromise guarantee **Abpromise保証は、次のテスト済みアプリケーションにおけるab51130の使用に適用されます**
 アプリケーションノートには、推奨の開始希釈率がありますが、適切な希釈率につきましてはご検討ください。

アプリケーション	Abreviews	特記事項
IHC-P		Use at an assay dependent concentration.
WB		1/500 - 1/1000. Detects a band of approximately 81 kDa (predicted molecular weight: 81 kDa).
ICC/IF	★★★★★ (1)	Use a concentration of 1 - 5 µg/ml.

ターゲット情報

機能	Membrane-cytoskeleton-associated protein that promotes the assembly of the spectrin-actin network. Binds to calmodulin.
組織特異性	Expressed in all tissues. Found in much higher levels in reticulocytes than the beta subunit.
配列類似性	Belongs to the aldolase class II family. Adducin subfamily.
ドメイン	Each subunit is comprised of three regions: a NH2-terminal protease-resistant globular head region, a short connecting subdomain, and a protease-sensitive tail region.
細胞内局在	Cytoplasm > cytoskeleton. Cell membrane.

画像

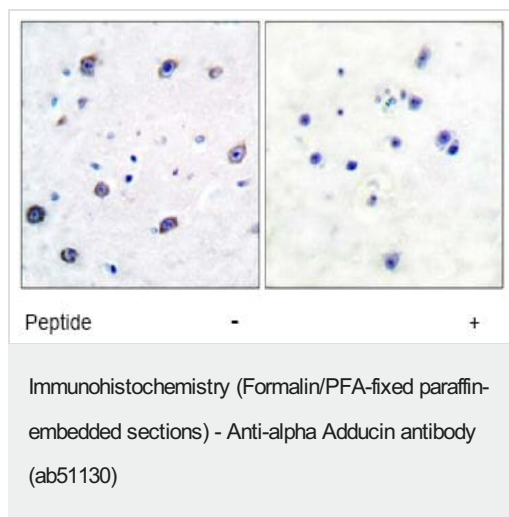


All lanes : Anti-alpha Adducin antibody (ab51130)

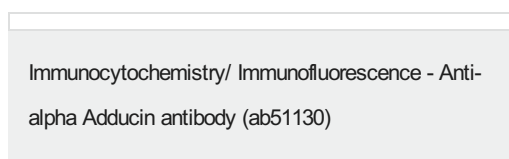
Lane 1 : Extracts from Hela cells treated with Forskolin (40nM, 30min) with no peptide

Lane 2 : Extracts from Hela cells treated with Forskolin (40nM, 30min) with immunising peptide

Predicted band size: 81 kDa



This image shows paraffin-embedded human brain tissue stained with ab51130 at a dilution of 1/100. Right hand image: tissue treated with immunising peptide; left hand image: untreated tissue



ICC/IF image of ab51130 stained Hek293 cells. The cells were 100% methanol fixed (5 min) and then incubated in 1%BSA / 10% normal goat serum / 0.3M glycine in 0.1% PBS-Tween for 1h to permeabilise the cells and block non-specific protein-protein interactions. The cells were then incubated with the antibody (ab51130, 1µg/ml) overnight at +4°C. The secondary antibody (green) was Alexa Fluor® 488 goat anti-rabbit IgG (H+L) used at a 1/1000 dilution for 1h. Alexa Fluor® 594 WGA was used to label plasma membranes (red) at a 1/200 dilution for 1h. DAPI was used to stain the cell nuclei (blue) at a concentration of 1.43µM.

Please note: All products are "FOR RESEARCH USE ONLY. NOT FOR USE IN DIAGNOSTIC PROCEDURES"

Our Abpromise to you: Quality guaranteed and expert technical support

- Replacement or refund for products not performing as stated on the datasheet
- Valid for 12 months from date of delivery
- Response to your inquiry within 24 hours
- We provide support in Chinese, English, French, German, Japanese and Spanish
- Extensive multi-media technical resources to help you
- We investigate all quality concerns to ensure our products perform to the highest standards

If the product does not perform as described on this datasheet, we will offer a refund or replacement. For full details of the Abpromise, please visit <https://www.abcam.co.jp/abpromise> or contact our technical team.

Terms and conditions

- Guarantee only valid for products bought direct from Abcam or one of our authorized distributors