


# Anti-alpha Adducin antibody ab101002

画像数 2

### 製品の概要

---

製品名	Anti-alpha Adducin antibody
製品の詳細	Rabbit polyclonal to alpha Adducin
由来種	Rabbit
アプリケーション	<b>適用あり:</b> IHC-P, WB
種交差性	<b>交差種:</b> Mouse, Rat, Human <b>交差が予測される動物種:</b> Horse, Chicken, Dog, Chimpanzee, Macaque monkey, Chinese hamster, Orangutan 
免疫原	Synthetic peptide corresponding to A wide range of other invertebrates alpha Adducin aa 500-600 conjugated to keyhole limpet haemocyanin. Database link: <a href="#">Q63028</a>
ポジティブ・コントロール	This antibody gave a positive signal in Mouse Kidney tissue lysate as well as HEK293 whole cell lysate. This antibody gave a positive result in IHC in the following FFPE tissue: Rat kidney.
特記事項	<p>The Life Science industry has been in the grips of a reproducibility crisis for a number of years. Abcam is leading the way in addressing this with our range of recombinant monoclonal antibodies and knockout edited cell lines for gold-standard validation. Please check that this product meets your needs before purchasing.</p> <p>If you have any questions, special requirements or concerns, please send us an inquiry and/or contact our Support team ahead of purchase. Recommended alternatives for this product can be found below, along with publications, customer reviews and Q&amp;As</p>

### 製品の特性

---

製品の状態	Liquid
保存方法	Shipped at 4°C. Store at +4°C short term (1-2 weeks). Upon delivery aliquot. Store at -20°C or -80°C. Avoid freeze / thaw cycle.
バッファー	pH: 7.40 Preservative: 0.02% Sodium azide Constituent: PBS
	Batches of this product that have a concentration < 1mg/ml may have BSA added as a stabilising agent. If you would like information about the formulation of a specific lot, please contact our scientific support team who will be happy to help.

精製度	Immunogen affinity purified
ポリモノ	ポリクローナル
アイソタイプ	IgG

## アプリケーション

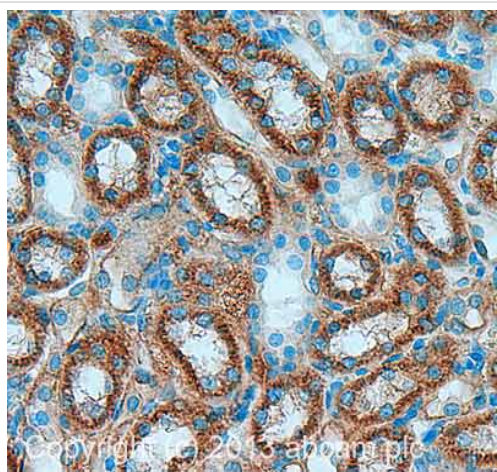
**The Abpromise guarantee**      **Abpromise保証は、次のテスト済みアプリケーションにおけるab101002の使用に適用されず**  
 アプリケーションノートには、推奨の開始希釈率がありますが、適切な希釈率につきましてはご検討ください。

アプリケーション	Abreviews	特記事項
IHC-P		Use a concentration of 0.1 µg/ml. Perform heat mediated antigen retrieval with citrate buffer pH 6 before commencing with IHC staining protocol.
WB		Use a concentration of 1 µg/ml. Detects a band of approximately 105 kDa (predicted molecular weight: 81 kDa).

## ターゲット情報

機能	Membrane-cytoskeleton-associated protein that promotes the assembly of the spectrin-actin network. Binds to calmodulin.
組織特異性	Expressed in all tissues. Found in much higher levels in reticulocytes than the beta subunit.
配列類似性	Belongs to the aldolase class II family. Adducin subfamily.
ドメイン	Each subunit is comprised of three regions: a NH2-terminal protease-resistant globular head region, a short connecting subdomain, and a protease-sensitive tail region.
細胞内局在	Cytoplasm > cytoskeleton. Cell membrane.

## 画像



Immunohistochemistry (Formalin/PFA-fixed paraffin-embedded sections) - Anti-alpha Adducin antibody (ab101002)

IHC image of alpha Adducin staining in rat normal kidney formalin fixed paraffin embedded tissue section, performed on a Leica Bond™ system using the standard protocol F. The section was pre-treated using heat mediated antigen retrieval with sodium citrate buffer (pH6, epitope retrieval solution 1) for 20 mins. The section was then incubated with ab101002, 0.1µg/ml, for 15 mins at room temperature and detected using an HRP conjugated compact polymer system. DAB was used as the chromogen. The section was then counterstained with haematoxylin and mounted with DPX.

For other IHC staining systems (automated and non-automated) customers should optimize variable parameters such as antigen retrieval conditions, primary antibody concentration and antibody incubation times.



Western blot - Anti-alpha Adducin antibody (ab101002)

**All lanes** : Anti-alpha Adducin antibody (ab101002) at 1 µg/ml (Milk blocking - 5%)

**Lane 1** : Kidney (Mouse) Tissue Lysate

**Lane 2** : HEK293 (Human embryonic kidney cell line) Whole Cell Lysate

Lysates/proteins at 25 µg per lane.

### Secondary

**All lanes** : Goat Anti-Rabbit IgG H&L (HRP) ([ab97051](#)) at 1/10000 dilution

Developed using the ECL technique.

Performed under reducing conditions.

**Predicted band size:** 81 kDa

**Observed band size:** 105 kDa

**Additional bands at:** 75 kDa (possible non-specific binding)

**Exposure time:** 4 minutes

ab101002 detects a band at 105 kDa, while this differs to its predicted molecular weight of 81 kDa, the banding pattern observed is consistent with what has been described in the literature PMID:9486854.

This blot was produced using a 10% Bis-tris gel under the MOPS buffer system. The gel was run at 200V for 50 minutes before being transferred onto a Nitrocellulose membrane at 30V for 70 minutes. The membrane was then blocked for an hour using 5% Milk before being incubated with ab101002 overnight at 4°C. Antibody binding was detected using an anti-rabbit antibody conjugated to HRP, and visualised using ECL development solution.

**Please note:** All products are "FOR RESEARCH USE ONLY. NOT FOR USE IN DIAGNOSTIC PROCEDURES"

### **Our Abpromise to you: Quality guaranteed and expert technical support**

---

- Replacement or refund for products not performing as stated on the datasheet
- Valid for 12 months from date of delivery
- Response to your inquiry within 24 hours
  
- We provide support in Chinese, English, French, German, Japanese and Spanish
- Extensive multi-media technical resources to help you
- We investigate all quality concerns to ensure our products perform to the highest standards

If the product does not perform as described on this datasheet, we will offer a refund or replacement. For full details of the Abpromise, please visit <https://www.abcam.co.jp/abpromise> or contact our technical team.

### **Terms and conditions**

---

- Guarantee only valid for products bought direct from Abcam or one of our authorized distributors