


# Anti-alpha 2 Macroglobulin antibody ab58703

★★★★★ [5 Abreviews](#) [10 References](#) [画像数 3](#)

### 製品の概要

---

製品名	Anti-alpha 2 Macroglobulin antibody
製品の詳細	Rabbit polyclonal to alpha 2 Macroglobulin
由来種	Rabbit
アプリケーション	<b>適用あり:</b> WB, IHC-P
種交差性	<b>交差種:</b> Human <b>交差が予測される動物種:</b> Mouse 
免疫原	Synthetic peptide corresponding to C terminal residues of human alpha 2 Macroglobulin.
特記事項	<p>The Life Science industry has been in the grips of a reproducibility crisis for a number of years. Abcam is leading the way in addressing this with our range of recombinant monoclonal antibodies and knockout edited cell lines for gold-standard validation. Please check that this product meets your needs before purchasing.</p> <p>If you have any questions, special requirements or concerns, please send us an inquiry and/or contact our Support team ahead of purchase. Recommended alternatives for this product can be found below, along with publications, customer reviews and Q&amp;As</p>

### 製品の特性

---

製品の状態	Liquid
保存方法	Shipped at 4°C. Upon delivery aliquot and store at -20°C. Avoid freeze / thaw cycles.
バッファー	pH: 7.2 Preservative: 0.01% Sodium azide Constituents: PBS, 50% Glycerol (glycerin, glycerine)
精製度	Immunogen affinity purified
特記事項(精製)	Purified by antigen specific affinity chromatography.
ポリ/モノ	ポリクローナル
アイソタイプ	IgG

### アプリケーション

---

The Abpromise guarantee

**Abpromise保証は、次のテスト済みアプリケーションにおけるab58703の使用に適用されます**

アプリケーションノートには、推奨の開始希釈率がありますが、適切な希釈率につきましてはご確認ください。

アプリケーション	Abreviews	特記事項
WB	★★★★☆ (2)	
IHC-P	★★★★★ (2)	

#### 追加情報

ELISA: Use at an assay dependent dilution.  
ICC: 1/500.  
IHC-P: Use at a concentration of 2 µg/ml.  
WB: Use at an assay dependent concentration. Predicted molecular weight: 163 kDa.

Not yet tested in other applications.  
Optimal dilutions/concentrations should be determined by the end user.

#### ターゲット情報

##### 機能

Is able to inhibit all four classes of proteinases by a unique 'trapping' mechanism. This protein has a peptide stretch, called the 'bait region' which contains specific cleavage sites for different proteinases. When a proteinase cleaves the bait region, a conformational change is induced in the protein which traps the proteinase. The entrapped enzyme remains active against low molecular weight substrates (activity against high molecular weight substrates is greatly reduced). Following cleavage in the bait region a thioester bond is hydrolyzed and mediates the covalent binding of the protein to the proteinase.

##### 組織特異性

Secreted in plasma.

##### 配列類似性

Belongs to the protease inhibitor I39 (alpha-2-macroglobulin) family.

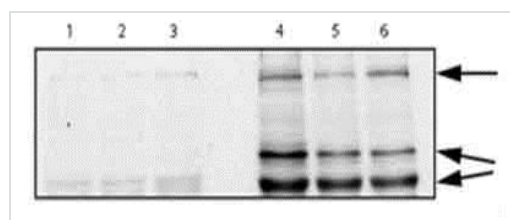
##### 発生段階

Contrary to the rat protein, which is an acute phase protein, this protein is always present at high levels in circulation.

##### 細胞内局在

Secreted.

#### 画像



Western blot - Anti-alpha 2 Macroglobulin antibody (ab58703)

Image from Jain MR et al, Proteome Sci. 2009 Jul 16;7:25, Fig 2.

**All lanes** : Anti-alpha 2 Macroglobulin antibody (ab58703) at 1/1000 dilution

**Lanes 1-3** : lysates prepared from rat spinal cord tissues (control group)

**Lanes 4-6** : lysates prepared from rat spinal cord tissues (encephalomyelitis group)

Lysates/proteins at 30 µg per lane.

##### Secondary

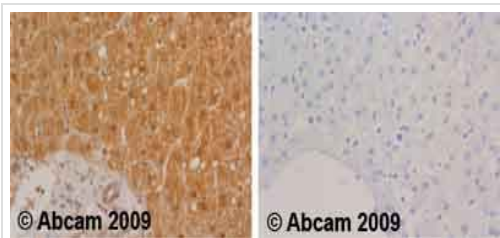
**All lanes** : goat anti-rabbit IgG coupled to horseradish peroxidase

**Predicted band size:** 163 kDa

**Observed band size:** 163 kDa

**Additional bands at:** 60 kDa (possible cleavage fragment), 80 kDa (possible cleavage fragment)

Three independent control and encephalomyelitis samples were used for Western blotting analysis. Samples were first resolved on a 12.5% SDS-PAGE gel and then transferred to a nitrocellulose membrane. The membrane was rinsed with PBS and the non specific binding sites were blocked in a solution of 5% non-fat milk in PBST (0.05% Tween 20 in PBS) for 1 hour at room temperature, followed by three washes in PBST for 10 minutes each. The membrane was first incubated with ab58703 at a 1/1,000 dilution overnight and then washed in PBST buffer as described above. The immunocomplexes were visualized by Western Lightning® Western Blot Chemiluminescence Reagent Plus, using a goat anti-rabbit IgG coupled to horseradish peroxidase as the secondary antibody.

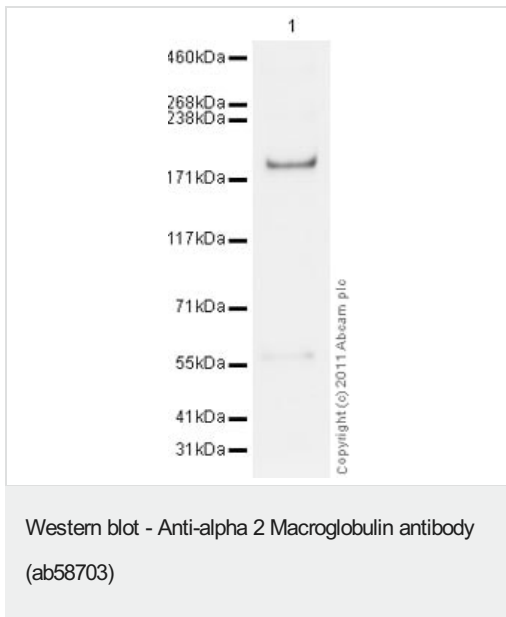


Immunohistochemistry (Formalin/PFA-fixed paraffin-embedded sections) - Anti-alpha 2 Macroglobulin antibody (ab58703)

Ab58703 staining alpha 2 Macroglobulin in human liver.

Left panel: with primary antibody at 2 ug/ml. Right panel: isotype control.

Sections were stained using an automated system DAKO Autostainer Plus , at room temperature. Sections were rehydrated and antigen retrieved with the Dako 3-in-1 antigen retrieval buffers EDTA pH 9.0 in a DAKO PT Link. Slides were peroxidase blocked in 3% H<sub>2</sub>O<sub>2</sub> in methanol for 10 minutes. They were then blocked with Dako Protein block for 10 minutes (containing casein 0.25% in PBS) then incubated with primary antibody for 20 minutes and detected with Dako Envision Flex amplification kit for 30 minutes. Colorimetric detection was completed with diaminobenzidine for 5 minutes. Slides were counterstained with Haematoxylin and coverslipped under DePeX. Please note that for manual staining we recommend to optimize the primary antibody concentration and incubation time (overnight incubation), and amplification may be required.



Anti-alpha 2 Macroglobulin antibody (ab58703) at 1 µg/ml + Native Human alpha 2 Macroglobulin protein ([ab77935](#)) at 0.1 µg

**Secondary**

Goat Anti-Rabbit IgG H&L (HRP) preadsorbed ([ab97080](#)) at 1/5000 dilution

Developed using the ECL technique.

Performed under reducing conditions.

**Predicted band size:** 163 kDa

**Exposure time:** 3 minutes

**Please note:** All products are "FOR RESEARCH USE ONLY. NOT FOR USE IN DIAGNOSTIC PROCEDURES"

**Our Abpromise to you: Quality guaranteed and expert technical support**

- Replacement or refund for products not performing as stated on the datasheet
- Valid for 12 months from date of delivery
- Response to your inquiry within 24 hours
- We provide support in Chinese, English, French, German, Japanese and Spanish
- Extensive multi-media technical resources to help you
- We investigate all quality concerns to ensure our products perform to the highest standards

If the product does not perform as described on this datasheet, we will offer a refund or replacement. For full details of the Abpromise, please visit <https://www.abcam.co.jp/abpromise> or contact our technical team.

**Terms and conditions**

- Guarantee only valid for products bought direct from Abcam or one of our authorized distributors