

Anti-alpha 1 Spectrin antibody [17C7] ab11751

★★★★★ [3 Abreviews](#) [13 References](#) [画像数 2](#)

製品の概要

製品名	Anti-alpha 1 Spectrin antibody [17C7]
製品の詳細	Mouse monoclonal [17C7] to alpha 1 Spectrin
由来種	Mouse
特異性	ab11751 is developed against the alpha I spectrin SH3 domain. It does not crossreact with alpha II (nonerythroid) spectrin SH3 domain or recombinant human fodrin SH3 domain. In NIH 3T3 cells, ab11751 reacts with a 200 kDa protein which is a candidate marker of endocytic vesicles called macropinosomes.
アプリケーション	適用あり: ELISA, IHC-Fr, ICC/IF, WB
種交差性	交差種: Mouse, Rat, Human
免疫原	Recombinant alpha I spectrin (erythroid spectrin) SH3 domain.
ポジティブ・コントロール	Erythroid spectrin in red blood cells and cerebellum.
特記事項	<p>The Life Science industry has been in the grips of a reproducibility crisis for a number of years. Abcam is leading the way in addressing this with our range of recombinant monoclonal antibodies and knockout edited cell lines for gold-standard validation. Please check that this product meets your needs before purchasing.</p> <p>If you have any questions, special requirements or concerns, please send us an inquiry and/or contact our Support team ahead of purchase. Recommended alternatives for this product can be found below, along with publications, customer reviews and Q&As</p>

製品の特性

製品の状態	Liquid
保存方法	Shipped at 4°C. Upon delivery aliquot and store at -20°C. Avoid freeze / thaw cycles.
バッファー	Constituent: PBS
精製度	Affinity purified
特記事項 (精製)	Purified from tissue culture supernatant.
ポリ/モノ	モノクローナル
クローン名	17C7
アイソタイプ	IgG1
軽鎖の種類	kappa

アプリケーション

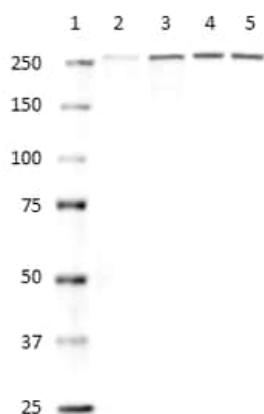
The Abpromise guarantee **Abpromise保証は、次のテスト済みアプリケーションにおけるab11751の使用に適用されます**
アプリケーションノートには、推奨の開始希釈率がありますが、適切な希釈率につきましてはご確認ください。

アプリケーション	Abreviews	特記事項
ELISA		Use at an assay dependent concentration.
IHC-Fr		Use at an assay dependent concentration.
ICC/IF	★★★★★ (2)	Use at an assay dependent concentration. See Abreview.
WB	★★★★☆ (1)	Use at an assay dependent concentration. Predicted molecular weight: 280 kDa.

ターゲット情報

機能	Spectrin is the major constituent of the cytoskeletal network underlying the erythrocyte plasma membrane. It associates with band 4.1 and actin to form the cytoskeletal superstructure of the erythrocyte plasma membrane.
関連疾患	<p>Defects in SPTA1 are the cause of elliptocytosis type 2 (EL2) [MIM:130600]. EL2 is a Rhesus-unlinked form of hereditary elliptocytosis, a genetically heterogeneous, autosomal dominant hematologic disorder. It is characterized by variable hemolytic anemia and elliptical or oval red cell shape.</p> <p>Defects in SPTA1 are a cause of hereditary pyropoikilocytosis (HPP) [MIM:266140]. HPP is an autosomal recessive disorder characterized by hemolytic anemia, microspherocytosis, poikilocytosis, and an unusual thermal sensitivity of red cells.</p> <p>Defects in SPTA1 are the cause of spherocytosis type 3 (SPH3) [MIM:270970]; also known as hereditary spherocytosis type 3 (HS3). Spherocytosis is a hematologic disorder leading to chronic hemolytic anemia and characterized by numerous abnormally shaped erythrocytes which are generally spheroidal. SPH3 is characterized by severe hemolytic anemia. Inheritance is autosomal recessive.</p>
配列類似性	<p>Belongs to the spectrin family.</p> <p>Contains 3 EF-hand domains.</p> <p>Contains 1 SH3 domain.</p> <p>Contains 21 spectrin repeats.</p>
細胞内局在	Cytoplasm > cytoskeleton. Cytoplasm > cell cortex.

画像



Western blot - Anti-alpha 1 Spectrin antibody [17C7] (ab11751)

All lanes : Anti-alpha 1 Spectrin antibody [17C7] (ab11751) at 1 µg/ml

Lane 1 : MW marker

Lane 2 : Human Lung lysate

Lane 3 : Mouse Lung lysate

Lane 4 : Rat Brain lysate

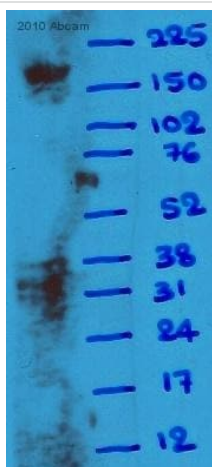
Lane 5 : Human Kidney lysate

Lysates/proteins at 50 µg per lane.

Secondary

All lanes : HRP labeled goat anti-mouse IgG

Predicted band size: 280 kDa



Western blot - Anti-alpha 1 Spectrin antibody [17C7] (ab11751)

This image is courtesy of an Abreview submitted by Dr. Mahesh Shivananjappa

Anti-alpha 1 Spectrin antibody [17C7] (ab11751) at 1/1000 dilution
+ Human Platelet whole cell lysate at 25 µg

Secondary

HRP-conjugated Goat Anti-mouse IgG at 1/10000 dilution

Developed using the ECL technique.

Performed under reducing conditions.

Predicted band size: 280 kDa

Additional bands at: 200 kDa (possible cleavage fragment)

Exposure time: 1 hour

Please note: All products are "FOR RESEARCH USE ONLY. NOT FOR USE IN DIAGNOSTIC PROCEDURES"

Our Abpromise to you: Quality guaranteed and expert technical support

- Replacement or refund for products not performing as stated on the datasheet
- Valid for 12 months from date of delivery

- Response to your inquiry within 24 hours
- We provide support in Chinese, English, French, German, Japanese and Spanish
- Extensive multi-media technical resources to help you
- We investigate all quality concerns to ensure our products perform to the highest standards

If the product does not perform as described on this datasheet, we will offer a refund or replacement. For full details of the Abpromise, please visit <https://www.abcam.co.jp/abpromise> or contact our technical team.

Terms and conditions

- Guarantee only valid for products bought direct from Abcam or one of our authorized distributors