

### Anti-alpha 1 Glycine Receptor/GLRA1 antibody ab192508

#### 画像数 1

#### 製品の概要

製品名	Anti-alpha 1 Glycine Receptor/GLRA1 antibody
製品の詳細	Rabbit polyclonal to alpha 1 Glycine Receptor/GLRA1
由来種	Rabbit
アプリケーション	<b>適用あり:</b> WB
種交差性	<b>交差種:</b> Mouse, Human
免疫原	Recombinant full length protein corresponding to Human alpha 1 Glycine Receptor/GLRA1. Database link: <a href="#">P23415</a>
ポジティブ・コントロール	WB: HeLa whole cell lysate, and mouse brain tissue lysate.

#### 製品の特性

製品の状態	Liquid
保存方法	Shipped at 4°C. Store at +4°C short term (1-2 weeks). Upon delivery aliquot. Store at -20°C long term. Avoid freeze / thaw cycle.
バッファー	Preservative: 0.1% Sodium azide Constituents: 49% PBS, 50% Glycerol
精製度	Immunogen affinity purified
特記事項 (精製)	ab192508 was affinity-purified from rabbit antiserum by affinity-chromatography using epitope-specific immunogen and the purity is > 95% (by SDS-PAGE).
ポリ/モノ	ポリクローナル
アイソタイプ	IgG

#### アプリケーション

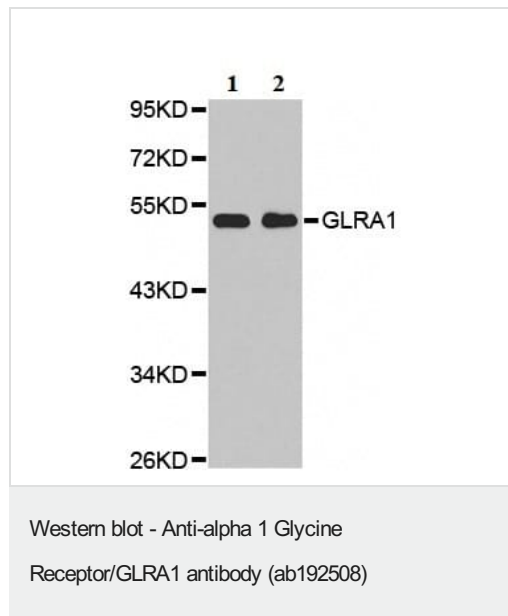
**The Abpromise guarantee**      **Abpromise保証は、次のテスト済みアプリケーションにおけるab192508の使用に適用されます**  
 アプリケーションノートには、推奨の開始希釈率がありますが、適切な希釈率につきましてはご検討ください。

アプリケーション	Abreviews	特記事項
WB		1/500. Predicted molecular weight: 53 kDa.

## ターゲット情報

<b>機能</b>	The glycine receptor is a neurotransmitter-gated ion channel. Binding of glycine to its receptor increases the chloride conductance and thus produces hyperpolarization (inhibition of neuronal firing).
<b>関連疾患</b>	Defects in GLRA1 are a cause of startle disease (STHE) [MIM:149400]; also known as hereditary hyperekplexia or congenital stiff-person syndrome. STHE is a genetically heterogeneous neurologic disorder characterized by muscular rigidity of central nervous system origin, particularly in the neonatal period, and by an exaggerated startle response to unexpected acoustic or tactile stimuli. Inheritance can be autosomal dominant or recessive.
<b>配列類似性</b>	Belongs to the ligand-gated ion channel (TC 1.A.9) family. Glycine receptor (TC 1.A.9.3) subfamily. GLRA1 sub-subfamily.
<b>細胞内局在</b>	Cell junction > synapse > postsynaptic cell membrane. Cell membrane.

## 画像



**All lanes :** Anti-alpha 1 Glycine Receptor/GLRA1 antibody (ab192508) at 1/500 dilution

**Lane 1 :** HeLa (human epithelial cell line from cervix adenocarcinoma) whole cell lysate

**Lane 2 :** Mouse brain tissue lysate

**Predicted band size:** 53 kDa

**Please note:** All products are "FOR RESEARCH USE ONLY. NOT FOR USE IN DIAGNOSTIC PROCEDURES"

## Our Abpromise to you: Quality guaranteed and expert technical support

- Replacement or refund for products not performing as stated on the datasheet
- Valid for 12 months from date of delivery
- Response to your inquiry within 24 hours
- We provide support in Chinese, English, French, German, Japanese and Spanish
- Extensive multi-media technical resources to help you
- We investigate all quality concerns to ensure our products perform to the highest standards

If the product does not perform as described on this datasheet, we will offer a refund or replacement. For full details of the Abpromise,

please visit <https://www.abcam.co.jp/abpromise> or contact our technical team.

## **Terms and conditions**

---

- Guarantee only valid for products bought direct from Abcam or one of our authorized distributors