

1 Abreviews 3 References 画像数 4

製品名	Anti-alpha 1 Fetoprotein antibody [1G7]
製品の詳細	Mouse monoclonal [1G7] to alpha 1 Fetoprotein
由来種	Mouse
アプリケーション	適用あり: WB, IHC-P, Sandwich ELISA, ICC/IF
種交差性	交差種: Human
免疫原	Recombinant fragment, corresponding to amino acids 500-610 of Human alpha 1 Fetoprotein
特記事項	<p>This product was changed from ascites to tissue culture supernatant on 13 May 2019. Please note that the dilutions may need to be adjusted accordingly. If you have any questions, please do not hesitate to contact our scientific support team.</p> <p>The Life Science industry has been in the grips of a reproducibility crisis for a number of years. Abcam is leading the way in addressing this with our range of recombinant monoclonal antibodies and knockout edited cell lines for gold-standard validation. Please check that this product meets your needs before purchasing.</p> <p>If you have any questions, special requirements or concerns, please send us an inquiry and/or contact our Support team ahead of purchase. Recommended alternatives for this product can be found below, along with publications, customer reviews and Q&As</p>

製品の状態	Liquid
保存方法	Shipped at 4°C. Upon delivery aliquot and store at -20°C or -80°C. Avoid repeated freeze / thaw cycles.
バッファー	pH: 7.40
特記事項(精製)	Purified from TCS.
ポリ/モノ	モノクローナル
クローン名	1G7
アイソタイプ	IgG
軽鎖の種類	kappa

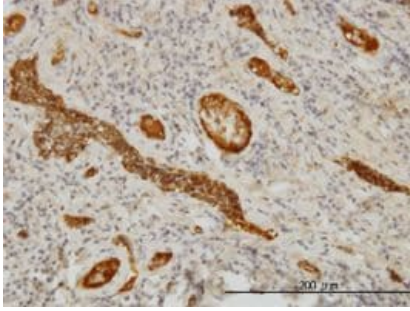
The Abpromise guarantee **Abpromise保証は、** 次のテスト済みアプリケーションにおけるab54745の使用に適用されます
アプリケーションノートには、推奨の開始希釈率がありますが、適切な希釈率につきましてはご検討ください。

アプリケーション	Abreviews	特記事項
WB		Use at an assay dependent concentration. Predicted molecular weight: 69 kDa.
IHC-P		Use at an assay dependent concentration.
Sandwich ELISA		Use at an assay dependent concentration. For sandwich ELISA, use this antibody as Capture at 1 µg/ml with ab8201 as Detection.
ICC/IF		Use at an assay dependent concentration.

ターゲット情報

機能	Binds copper, nickel, and fatty acids as well as, and bilirubin less well than, serum albumin. Only a small percentage (less than 2%) of the human AFP shows estrogen-binding properties.
組織特異性	Plasma. Synthesized by the fetal liver and yolk sac.
配列類似性	Belongs to the ALB/AFP/VDB family. Contains 3 albumin domains.
発生段階	Occurs in the plasma of fetuses more than 4 weeks old, reaches the highest levels during the 12th-16th week of gestation, and drops to trace amounts after birth. The serum level in adults is usually less than 40 ng/ml. AFP occurs also at high levels in the plasma and ascitic fluid of adults with hepatoma.
翻訳後修飾	Independent studies suggest heterogeneity of the N-terminal sequence of the mature protein and of the cleavage site of the signal sequence. Sulfated.
細胞内局在	Secreted.

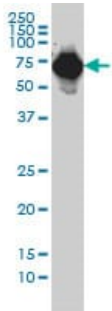
画像



Immunohistochemistry (Formalin/PFA-fixed paraffin-embedded sections) - Anti-alpha 1 Fetoprotein antibody [1G7] (ab54745)

alpha 1 Fetoprotein antibody (ab54745) used in immunohistochemistry at 3ug/ml on formalin fixed and paraffin embedded human tonsil.

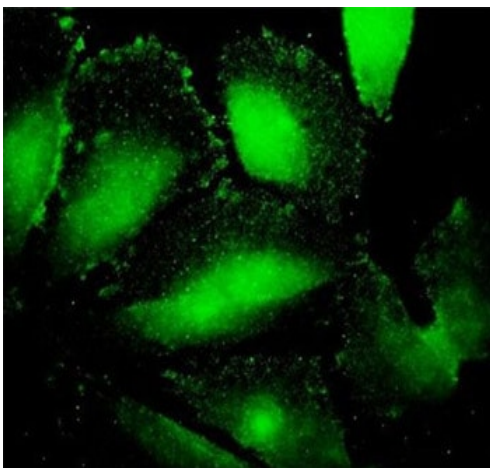
This image was generated using the ascites version of the product.



Western blot - Anti-alpha 1 Fetoprotein antibody [1G7] (ab54745)

alpha 1 Fetoprotein antibody (ab54745) at 1ug/lane + HepG2 cell lysate at 25ug/lane.

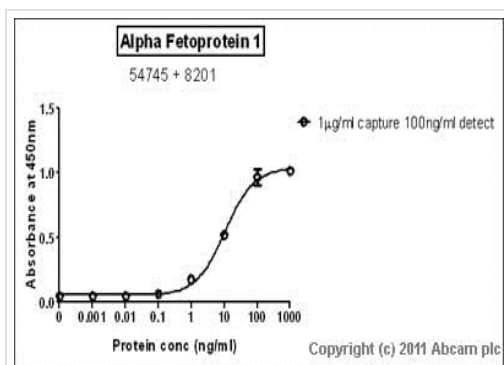
This image was generated using the ascites version of the product.



Immunocytochemistry/ Immunofluorescence - Anti-alpha 1 Fetoprotein antibody [1G7] (ab54745)

ab54745 at 10 ug/ml staining alpha Fetoprotein in human HeLa cells by Immunocytochemistry / Immunofluorescence.

This image was generated using the ascites version of the product.



Sandwich ELISA - Anti-alpha 1 Fetoprotein antibody
[1G7] (ab54745)

Standard Curve for Alpha 1 Fetoprotein dilution range 1pg/ml to 1ug/ml using Capture Antibody Mouse monoclonal to alpha 1 Fetoprotein (ab54745) at 1ug/ml and Detector Antibody Rabbit polyclonal to alpha 1 Fetoprotein (**ab8201**) at 0.1ug/ml

This image was generated using the ascites version of the product.

Please note: All products are "FOR RESEARCH USE ONLY. NOT FOR USE IN DIAGNOSTIC PROCEDURES"

Our Abpromise to you: Quality guaranteed and expert technical support

- Replacement or refund for products not performing as stated on the datasheet
- Valid for 12 months from date of delivery
- Response to your inquiry within 24 hours
- We provide support in Chinese, English, French, German, Japanese and Spanish
- Extensive multi-media technical resources to help you
- We investigate all quality concerns to ensure our products perform to the highest standards

If the product does not perform as described on this datasheet, we will offer a refund or replacement. For full details of the Abpromise, please visit <https://www.abcam.co.jp/abpromise> or contact our technical team.

Terms and conditions

- Guarantee only valid for products bought direct from Abcam or one of our authorized distributors