

### Anti-ALP antibody ab67228

[19 References](#) [画像数 1](#)

#### 製品の概要

---

製品名	Anti-ALP antibody
製品の詳細	Mouse polyclonal to ALP
由来種	Mouse
アプリケーション	<b>適用あり:</b> WB
種交差性	<b>交差種:</b> Human
免疫原	Recombinant full length protein within Human ALP. The exact immunogen sequence used to generate this antibody is proprietary information. If additional detail on the immunogen is needed to determine the suitability of the antibody for your needs, please <b>contact</b> our Scientific Support team to discuss your requirements.
ポジティブ・コントロール	ALP transfected 293T cell lysate.
特記事項	<p>The Life Science industry has been in the grips of a reproducibility crisis for a number of years. Abcam is leading the way in addressing this with our range of recombinant monoclonal antibodies and knockout edited cell lines for gold-standard validation. Please check that this product meets your needs before purchasing.</p> <p>If you have any questions, special requirements or concerns, please send us an inquiry and/or contact our Support team ahead of purchase. Recommended alternatives for this product can be found below, along with publications, customer reviews and Q&amp;As</p>

#### 製品の特性

---

製品の状態	Liquid
保存方法	Shipped at 4°C. Upon delivery aliquot and store at -20°C or -80°C. Avoid repeated freeze / thaw cycles.
バッファー	pH: 7.40 Constituent: 100% PBS
精製度	Protein A purified
ポリモノ	ポリクローナル
アイソタイプ	IgG

#### アプリケーション

---

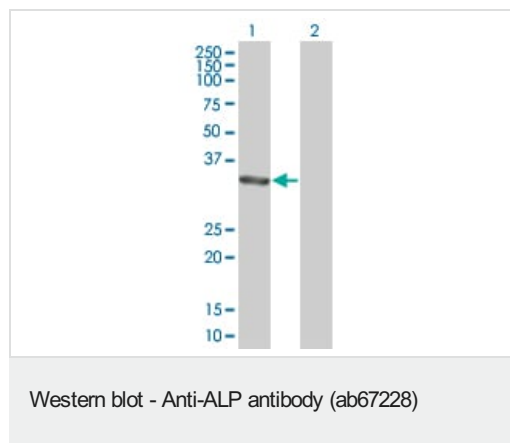
**The Abpromise guarantee**      **Abpromise保証は、次のテスト済みアプリケーションにおけるab67228の使用に適用されます**  
 アプリケーションノートには、推奨の開始希釈率がありますが、適切な希釈率につきましてはご検討ください。

アプリケーション	Abreviews	特記事項
WB		1/500 - 1/1000. Detects a band of approximately 35 kDa (predicted molecular weight: 39 kDa).

## ターゲット情報

<b>機能</b>	May play a role in the organization of actin filament arrays within muscle cells.
<b>組織特異性</b>	Isoform 1 is highly expressed in differentiated skeletal muscle. Isoform 2 is heart-specific.
<b>配列類似性</b>	Contains 1 LIM zinc-binding domain. Contains 1 PDZ (DHR) domain.
<b>細胞内局在</b>	Cytoplasm > myofibril > sarcomere > Z line. Localizes to myofiber Z-lines.

## 画像



**All lanes** : Anti-ALP antibody (ab67228) at 1/500 dilution

**Lane 1** : ALP transfected 293T cell lysate

**Lane 2** : Non-transfected 293T cell lysate

Lysates/proteins at 25 µg per lane.

### Secondary

**All lanes** : Goat Anti-Mouse IgG (H&L)-HRP Conjugate at 1/2500 dilution

**Predicted band size:** 39 kDa

**Observed band size:** 35 kDa

**Please note:** All products are "FOR RESEARCH USE ONLY. NOT FOR USE IN DIAGNOSTIC PROCEDURES"

## Our Abpromise to you: Quality guaranteed and expert technical support

- Replacement or refund for products not performing as stated on the datasheet
- Valid for 12 months from date of delivery
- Response to your inquiry within 24 hours
- We provide support in Chinese, English, French, German, Japanese and Spanish
- Extensive multi-media technical resources to help you

- We investigate all quality concerns to ensure our products perform to the highest standards

If the product does not perform as described on this datasheet, we will offer a refund or replacement. For full details of the Abpromise, please visit <https://www.abcam.co.jp/abpromise> or contact our technical team.

### **Terms and conditions**

---

- Guarantee only valid for products bought direct from Abcam or one of our authorized distributors