


### Anti-ALKBH4 antibody ab113500

面格粉

医薬用外毒物

#### 製品の概要

製品名	Anti-ALKBH4 antibody
製品の詳細	Rabbit polyclonal to ALKBH4
由来種	Rabbit
アプリケーション	適用あり: WB, IHC-P
種交差性	交差種: Human 交差が予測される動物種: Mouse, Rat 
免疫原	Recombinant fragment, corresponding to amino acids 38-282 of Human ALKBH4 (BC002820).
ポジティブ・コントロール	Human fetal spleen, fetal liver and fetal kidney lysates; Human fetal pancreas tissue.
特記事項	<p>The Life Science industry has been in the grips of a reproducibility crisis for a number of years. Abcam is leading the way in addressing this with our range of recombinant monoclonal antibodies and knockout edited cell lines for gold-standard validation. Please check that this product meets your needs before purchasing.</p> <p>If you have any questions, special requirements or concerns, please send us an inquiry and/or contact our Support team ahead of purchase. Recommended alternatives for this product can be found below, along with publications, customer reviews and Q&amp;As</p>

#### 製品の特性

製品の状態	Lyophilized:Reconstitute with 200ul distilled sterile water. Please note that if you receive this product in liquid form it has already been reconstituted as described and no further reconstitution is necessary.
保存方法	Shipped at 4°C. Upon delivery aliquot and store at -20°C. Avoid freeze / thaw cycles.
バッファー	pH: 7.20 Preservative: 0.02% Sodium azide Constituent: 1% BSA
精製度	Immunogen affinity purified
ポリ/モノ	ポリクローナル
アイソタイプ	IgG

## アプリケーション

### The Abpromise guarantee

**Abpromise保証は、**次のテスト済みアプリケーションにおけるab113500の使用に適用されます

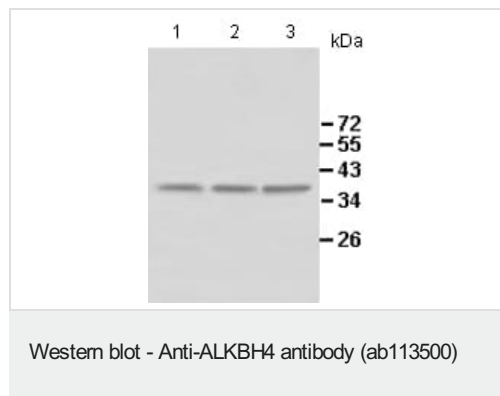
アプリケーションノートには、推奨の開始希釈率がありますが、適切な希釈率につきましてはご確認ください。

アプリケーション	Abreviews	特記事項
WB		1/500 - 1/1000. Detects a band of approximately 36 kDa (predicted molecular weight: 34 kDa).
IHC-P		1/100 - 1/500.

## ターゲット情報

機能	Dioxygenase that mediates demethylation of actin monomethylated at 'Lys-84' (K84me1), thereby acting as a regulator of actomyosin-processes. Demethylation of actin K84me1 is required for maintaining actomyosin dynamics supporting normal cleavage furrow ingression during cytokinesis and cell migration. May be involved in transcription regulation.
組織特異性	Widely expressed, with highest expression in pancreas, ovary and spleen.
配列類似性	Belongs to the alkB family.
細胞内局在	Cytoplasm. Nucleus. Midbody. Associates with the contractile ring and midbody.

## 画像



**All lanes :** Anti-ALKBH4 antibody (ab113500) at 1/500 dilution

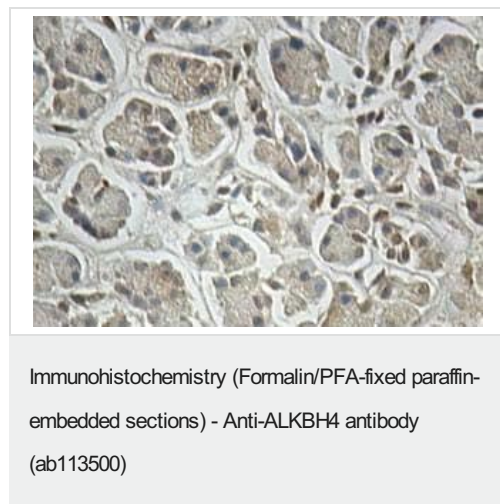
**Lane 1 :** Human fetal spleen lysate

**Lane 2 :** Human fetal liver lysate

**Lane 3 :** Human fetal kidney lysate

**Predicted band size:** 34 kDa

**Observed band size:** 36 kDa



ab113500, at 1/100 dilution, staining ALKBH4 in Formalin-fixed, Paraffin-embedded Human fetal pancreas tissue by Immunohistochemistry.

Note cytoplasmic and nuclear staining.

**Please note:** All products are "FOR RESEARCH USE ONLY. NOT FOR USE IN DIAGNOSTIC PROCEDURES"

### **Our Abpromise to you: Quality guaranteed and expert technical support**

---

- Replacement or refund for products not performing as stated on the datasheet
- Valid for 12 months from date of delivery
- Response to your inquiry within 24 hours
- We provide support in Chinese, English, French, German, Japanese and Spanish
- Extensive multi-media technical resources to help you
- We investigate all quality concerns to ensure our products perform to the highest standards

If the product does not perform as described on this datasheet, we will offer a refund or replacement. For full details of the Abpromise, please visit <https://www.abcam.co.jp/abpromise> or contact our technical team.

### **Terms and conditions**

---

- Guarantee only valid for products bought direct from Abcam or one of our authorized distributors