

Alkaline Phosphatase Anti-GFP antibody ab6661

[3 References](#) [画像数 2](#)

製品の概要

製品名	Alkaline Phosphatase Anti-GFP antibody
製品の詳細	Alkaline Phosphatase Goat polyclonal to GFP
由来種	Goat
標識	Alkaline Phosphatase
特異性	Antibody recognizes wild type, recombinant and enhanced forms of GFP. Immunoblot shows a 42 kDa band when reacted with GFP on a Western blot. No reaction was observed against human, mouse and rat serum proteins.
アプリケーション	適用あり: WB, ELISA, Dot blot
種交差性	交差種: Species independent
免疫原	Recombinant full length protein corresponding to GFP aa 1-250. Database link: P42212
特記事項	Designed to detect GFP and its variants in ELISA (sandwich or capture), immunoblotting and immunoprecipitation. Alkaline Phosphatase (Calf Intestine) (Molecular Weight 140,000 daltons) The Life Science industry has been in the grips of a reproducibility crisis for a number of years. Abcam is leading the way in addressing this with our range of recombinant monoclonal antibodies and knockout edited cell lines for gold-standard validation. Please check that this product meets your needs before purchasing. If you have any questions, special requirements or concerns, please send us an inquiry and/or contact our Support team ahead of purchase. Recommended alternatives for this product can be found below, along with publications, customer reviews and Q&As

製品の特性

製品の状態	Liquid
保存方法	Shipped at 4°C. Store at +4°C. Do Not Freeze.
バッファー	Preservative: 0.1% Sodium azide Constituents: 0.00136% Zinc chloride, 0.0095% Magnesium chloride, 0.79% Tris HCl, 50% Glycerol (glycerin, glycerine), 0.87% Sodium chloride, 1% BSA
精製度	Affinity purified

特記事項 (精製)

This product was prepared from monospecific antiserum by immunoaffinity chromatography using Green Fluorescent Protein (*Aequorea victoria*) coupled to agarose beads followed by solid phase adsorption(s) to remove any unwanted reactivities. Assay by immunoelectrophoresis resulted in a single precipitin arc against anti-Goat serum, anti-Alkaline Phosphatase and purified and partially purified GFP (*Aequorea victoria*) serum.

一次抗体 備考

Designed to detect GFP and its variants in ELISA (sandwich or capture), immunoblotting and immunoprecipitation.

ポリ/モノ

ポリクローナル

アイソタイプ

IgG

アプリケーション

The Abpromise guarantee Abpromise保証は、次のテスト済みアプリケーションにおけるab6661の使用に適用されます

アプリケーションノートには、推奨の開始希釈率がありますが、適切な希釈率につきましてはご検討ください。

アプリケーション	Abreviews	特記事項
WB		1/500 - 1/2500.
ELISA		1/2000 - 1/8000. This product has been assayed against 1.0 µg of GFP in a standard capture ELISA using pNPP p-nitrophenyl phosphate as a substrate for 30 minutes at room temperature.
Dot blot		1/1000.

ターゲット情報

関連性

Function: Energy-transfer acceptor. Its role is to transduce the blue chemiluminescence of the protein aequorin into green fluorescent light by energy transfer. Fluoresces in vivo upon receiving energy from the Ca²⁺-activated photoprotein aequorin.

Subunit structure: Monomer.

Tissue specificity: Photocytes.

Post-translational modification: Contains a chromophore consisting of modified amino acid residues. The chromophore is formed by autocatalytic backbone condensation between Ser-65 and Gly-67, and oxidation of Tyr-66 to didehydrotyrosine. Maturation of the chromophore requires nothing other than molecular oxygen.

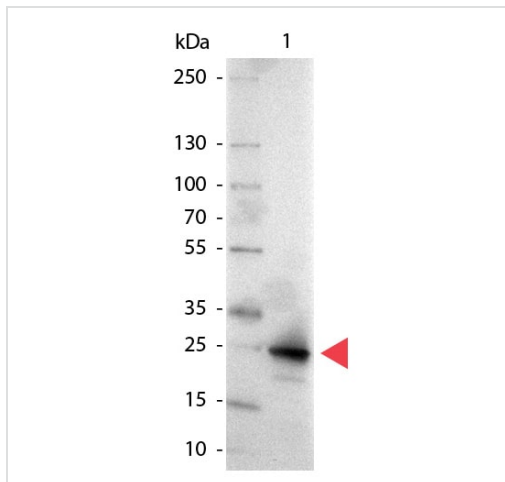
Biotechnological use: Green fluorescent protein has been engineered to produce a vast number of variously colored mutants, fusion proteins, and biosensors. Fluorescent proteins and its mutated allelic forms, blue, cyan and yellow have become a useful and ubiquitous tool for making chimeric proteins, where they function as a fluorescent protein tag. Typically they tolerate N- and C-terminal fusion to a broad variety of proteins. They have been expressed in most known cell types and are used as a noninvasive fluorescent marker in living cells and organisms. They enable a wide range of applications where they have functioned as a cell lineage tracer, reporter

of gene expression, or as a measure of protein-protein interactions. Can also be used as a molecular thermometer, allowing accurate temperature measurements in fluids. The measurement process relies on the detection of the blinking of GFP using fluorescence correlation spectroscopy.

Sequence similarities: Belongs to the GFP family.

Biophysicochemical properties: Absorption: Abs(max)=395 nm
Exhibits a smaller absorbance peak at 470 nm. The fluorescence emission spectrum peaks at 509 nm with a shoulder at 540 nm.

画像



Alkaline Phosphatase Anti-GFP antibody (ab6661) at 1/1000 dilution + GFP at 0.05 μ g with Blocking buffer

Western blot - Alkaline Phosphatase Anti-GFP antibody (ab6661)



Dot blot analysis of ab6661 used in all lanes at a concentration of 1/1,000 incubated at room temperature for 1 hour.

Dot Blot - Alkaline Phosphatase Anti-GFP antibody (ab6661)

Lane 1: 100 ng GFP protein
Lane 2: 33.33 ng GFP protein
Lane 3: 11.11 ng GFP protein
Lane 4: 3.70 ng GFP protein
Lane 5: 1.23 ng GFP protein

Please note: All products are "FOR RESEARCH USE ONLY. NOT FOR USE IN DIAGNOSTIC PROCEDURES"

Our Abpromise to you: Quality guaranteed and expert technical support

- Replacement or refund for products not performing as stated on the datasheet
- Valid for 12 months from date of delivery
- Response to your inquiry within 24 hours

- We provide support in Chinese, English, French, German, Japanese and Spanish
- Extensive multi-media technical resources to help you
- We investigate all quality concerns to ensure our products perform to the highest standards

If the product does not perform as described on this datasheet, we will offer a refund or replacement. For full details of the Abpromise, please visit <https://www.abcam.co.jp/abpromise> or contact our technical team.

Terms and conditions

- Guarantee only valid for products bought direct from Abcam or one of our authorized distributors