

Alexa Fluor® 680 Anti-beta Actin antibody [mAbcam 8226] - Loading Control ab184092

画像数 1

製品の概要

製品名	Alexa Fluor® 680 Anti-beta Actin antibody [mAbcam 8226] - Loading Control
製品の詳細	Alexa Fluor® 680 Mouse monoclonal [mAbcam 8226] to beta Actin - Loading Control
由来種	Mouse
標識	Alexa Fluor® 680. Ex: 679nm, Em: 702nm
アプリケーション	適用あり: WB
種交差性	交差種: Mouse, Human
免疫原	Synthetic peptide. This information is proprietary to Abcam and/or its suppliers.
ポジティブ・コントロール	This antibody gave a positive signal in the following whole cell lysates: HeLa; HEK293; Jurkat; NIH3T3.
特記事項	<p>Alexa Fluor® is a registered trademark of Molecular Probes, Inc, a Thermo Fisher Scientific Company. The Alexa Fluor® dye included in this product is provided under an intellectual property license from Life Technologies Corporation. As this product contains the Alexa Fluor® dye, the purchase of this product conveys to the buyer the non-transferable right to use the purchased product and components of the product only in research conducted by the buyer (whether the buyer is an academic or for-profit entity). As this product contains the Alexa Fluor® dye the sale of this product is expressly conditioned on the buyer not using the product or its components, or any materials made using the product or its components, in any activity to generate revenue, which may include, but is not limited to use of the product or its components: (i) in manufacturing; (ii) to provide a service, information, or data in return for payment (iii) for therapeutic, diagnostic or prophylactic purposes; or (iv) for resale, regardless of whether they are sold for use in research. For information on purchasing a license to this product for purposes other than research, contact Life Technologies Corporation, 5781 Van Allen Way, Carlsbad, CA 92008 USA or outlicensing@thermofisher.com.</p> <p>The Life Science industry has been in the grips of a reproducibility crisis for a number of years. Abcam is leading the way in addressing this with our range of recombinant monoclonal antibodies and knockout edited cell lines for gold-standard validation. Please check that this product meets your needs before purchasing.</p> <p>If you have any questions, special requirements or concerns, please send us an inquiry and/or contact our Support team ahead of purchase. Recommended alternatives for this product can be found below, along with publications, customer reviews and Q&As</p>

製品の特性

製品の状態	Liquid
保存方法	Shipped at 4°C. Store at +4°C short term (1-2 weeks). Upon delivery aliquot. Store at -20°C long term. Avoid freeze / thaw cycle. Store In the Dark.
バッファー	Preservative: 0.02% Sodium azide Constituents: PBS, 1% BSA, 30% Glycerol (glycerin, glycerine)
ポリ/モノ	モノクローナル
クローン名	mAbcam 8226
ミエローマ	Sp2/0-Ag14
アイソタイプ	IgG1
軽鎖の種類	kappa

アプリケーション

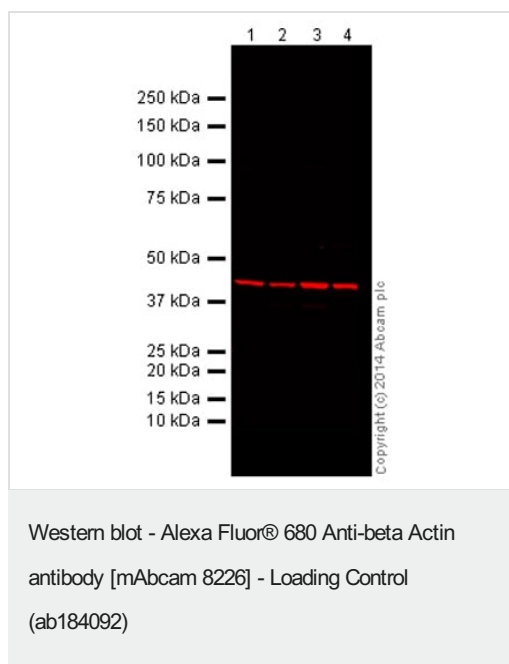
The Abpromise guarantee **Abpromise保証は、**次のテスト済みアプリケーションにおけるab184092の使用に適用されます
アプリケーションノートには、推奨の開始希釈率がありますが、適切な希釈率につきましてはご検討ください。

アプリケーション	Abreviews	特記事項
WB		Use a concentration of 1 µg/ml. Detects a band of approximately 42 kDa (predicted molecular weight: 42 kDa).

ターゲット情報

機能	Actins are highly conserved proteins that are involved in various types of cell motility and are ubiquitously expressed in all eukaryotic cells.
関連疾患	Defects in ACTB are a cause of dystonia juvenile-onset (DYTJ) [MIM:607371]. DYTJ is a form of dystonia with juvenile onset. Dystonia is defined by the presence of sustained involuntary muscle contraction, often leading to abnormal postures. DYTJ patients manifest progressive, generalized, dopa-unresponsive dystonia, developmental malformations and sensory hearing loss.
配列類似性	Belongs to the actin family.
翻訳後修飾	ISGylated.
細胞内局在	Cytoplasm > cytoskeleton. Localized in cytoplasmic mRNP granules containing untranslated mRNAs.

画像



All lanes : Alexa Fluor® 680 Anti-beta Actin antibody [mAbcam 8226] - Loading Control (ab184092) at 1 µg/ml

Lane 1 : HeLa (Human epithelial carcinoma cell line) Whole Cell Lysate

Lane 2 : HEK293 (Human embryonic kidney cell line) Whole Cell Lysate

Lane 3 : HepG2 (Human hepatocellular liver carcinoma cell line) Whole Cell Lysate

Lane 4 : NIH 3T3 (Mouse embryonic fibroblast cell line) Whole Cell Lysate

Lysates/proteins at 10 µg per lane.

Predicted band size: 42 kDa

Observed band size: 42 kDa

This blot was produced using a 4-12% Bis-tris gel under the MOPS buffer system. The gel was run at 200V for 50 minutes before being transferred onto a Nitrocellulose membrane at 30V for 70 minutes. The membrane was then blocked for an hour using 5% Milk before being incubated with ab184092 overnight at 4°C. Antibody binding was detected after washing to remove excess antibody and imaged using the Licor Odyssey CLx.

Please note: All products are "FOR RESEARCH USE ONLY. NOT FOR USE IN DIAGNOSTIC PROCEDURES"

Our Abpromise to you: Quality guaranteed and expert technical support

- Replacement or refund for products not performing as stated on the datasheet
- Valid for 12 months from date of delivery
- Response to your inquiry within 24 hours
- We provide support in Chinese, English, French, German, Japanese and Spanish
- Extensive multi-media technical resources to help you
- We investigate all quality concerns to ensure our products perform to the highest standards

If the product does not perform as described on this datasheet, we will offer a refund or replacement. For full details of the Abpromise, please visit <https://www.abcam.co.jp/abpromise> or contact our technical team.

Terms and conditions

- Guarantee only valid for products bought direct from Abcam or one of our authorized distributors