


Anti-Aldolase C antibody [IGG1K] - N-terminal ab211483

[2 References](#) [画像数 1](#)

製品の概要

製品名	Anti-Aldolase C antibody [IGG1K] - N-terminal
製品の詳細	Mouse monoclonal [IGG1K] to Aldolase C - N-terminal
由来種	Mouse
アプリケーション	適用あり: IHC-P
種交差性	交差種: Human 交差が予測される動物種: Mouse, Rat, Rabbit, Cow, Chimpanzee, Cynomolgus monkey 
免疫原	Synthetic peptide corresponding to Human Aldolase C aa 1-100 (N terminal). NP_005156.1. Database link: P09972 Run BLAST with Run BLAST with
ポジティブ・コントロール	Human brain cerebellum tissue.
特記事項	<p>The Life Science industry has been in the grips of a reproducibility crisis for a number of years. Abcam is leading the way in addressing this with our range of recombinant monoclonal antibodies and knockout edited cell lines for gold-standard validation. Please check that this product meets your needs before purchasing.</p> <p>If you have any questions, special requirements or concerns, please send us an inquiry and/or contact our Support team ahead of purchase. Recommended alternatives for this product can be found below, along with publications, customer reviews and Q&As</p>

製品の特性

製品の状態	Liquid
保存方法	Shipped at 4°C. Store at +4°C short term (1-2 weeks). Upon delivery aliquot. Store at -20°C long term. Avoid freeze / thaw cycle.
バッファー	Preservative: 0.05% Sodium azide Constituent: 99% PBS
精製度	Protein G purified
ポリ/モノ	モノクローナル
クローン名	IGG1K

アプリケーション

The Abpromise guarantee **Abpromise保証は、次のテスト済みアプリケーションにおけるab211483の使用に適用されます**
アプリケーションノートには、推奨の開始希釈率がありますが、適切な希釈率につきましてはご検討ください。

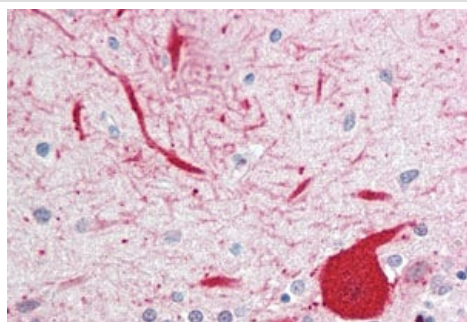
アプリケーション	Abreviews	特記事項
IHC-P		Use a concentration of 10 µg/ml. Perform heat mediated antigen retrieval before commencing with IHC staining protocol.

ターゲット情報

パスウェイ Carbohydrate degradation; glycolysis; D-glyceraldehyde 3-phosphate and glycerone phosphate from D-glucose: step 4/4.

配列類似性 Belongs to the class I fructose-bisphosphate aldolase family.

画像



Immunohistochemical analysis of formalin-fixed, paraffin-embedded Human brain cerebellum tissue labeling Aldolase C with ab211483 at 10 µg/ml.

Immunohistochemistry (Formalin/PFA-fixed paraffin-embedded sections) - Anti-Aldolase C antibody [IGG1K] - N-terminal (ab211483)

Please note: All products are "FOR RESEARCH USE ONLY. NOT FOR USE IN DIAGNOSTIC PROCEDURES"

Our Abpromise to you: Quality guaranteed and expert technical support

- Replacement or refund for products not performing as stated on the datasheet
- Valid for 12 months from date of delivery
- Response to your inquiry within 24 hours
- We provide support in Chinese, English, French, German, Japanese and Spanish
- Extensive multi-media technical resources to help you
- We investigate all quality concerns to ensure our products perform to the highest standards

If the product does not perform as described on this datasheet, we will offer a refund or replacement. For full details of the Abpromise, please visit <https://www.abcam.co.jp/abpromise> or contact our technical team.

Terms and conditions

- Guarantee only valid for products bought direct from Abcam or one of our authorized distributors