

Anti-Aldolase B antibody ab153828

2 References [画像数 5](#)

製品の概要

製品名	Anti-Aldolase B antibody
製品の詳細	Rabbit polyclonal to Aldolase B
由来種	Rabbit
アプリケーション	適用あり: WB, IHC-P, ICC/IF
種交差性	交差種: Mouse, Rat, Human
免疫原	Recombinant fragment corresponding to Human Aldolase B aa 15-265. Database link: <u>P05062</u>
ポジティブ・コントロール	Recombinant Human Aldolase B protein (<u>ab123165</u>) can be used as a positive control in WB. 293T, A431, HeLa, Neuro2A, GL261, C8D30 and PC12 whole cell lysates; Hela cells; Human hepatoma tissue.
特記事項	<p>The Life Science industry has been in the grips of a reproducibility crisis for a number of years. Abcam is leading the way in addressing this with our range of recombinant monoclonal antibodies and knockout edited cell lines for gold-standard validation. Please check that this product meets your needs before purchasing.</p> <p>If you have any questions, special requirements or concerns, please send us an inquiry and/or contact our Support team ahead of purchase. Recommended alternatives for this product can be found below, along with publications, customer reviews and Q&As</p>

製品の特性

製品の状態	Liquid
保存方法	Shipped at 4°C. Upon delivery aliquot. Store at -20°C or -80°C. Avoid freeze / thaw cycle.
バッファー	pH: 7.00 Preservative: 0.025% Proclin 300 Constituents: 78% PBS, 1% BSA, 20% Glycerol (glycerin, glycerine)
精製度	Immunogen affinity purified
ポリ/モノ	ポリクローナル
アイソタイプ	IgG

アプリケーション

The Abpromise guarantee

Abpromise保証は、次のテスト済みアプリケーションにおけるab153828の使用に適用されます

アプリケーションノートには、推奨の開始希釈率がありますが、適切な希釈率につきましてはご検討ください。

アプリケーション	Abreviews	特記事項
WB		1/500 - 1/3000. Predicted molecular weight: 39 kDa.
IHC-P		1/100 - 1/1000.
ICC/IF		1/100 - 1/1000.

ターゲット情報

パスウェイ

Carbohydrate degradation; glycolysis; D-glyceraldehyde 3-phosphate and glycerone phosphate from D-glucose: step 4/4.

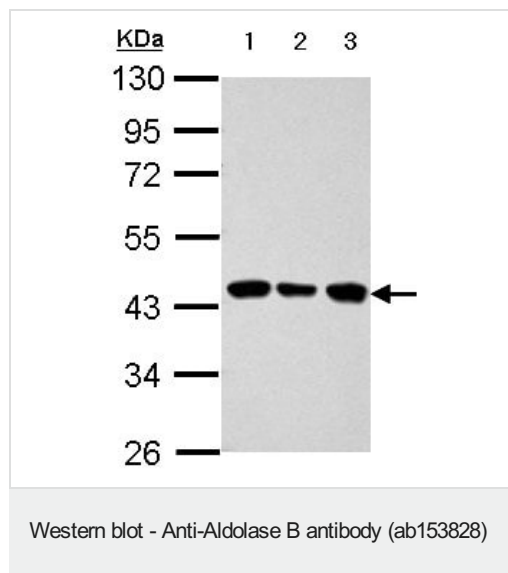
関連疾患

Defects in ALDOB are the cause of hereditary fructose intolerance (HFI) [MIM:229600]. HFI is an autosomal recessive disease that results in an inability to metabolize fructose and related sugars. Complete exclusion of fructose results in dramatic recovery; however, if not treated properly, HFI subjects suffer episodes of hypoglycemia, general ill condition, and risk of death the remainder of life.

配列類似性

Belongs to the class I fructose-bisphosphate aldolase family.

画像



All lanes : Anti-Aldolase B antibody (ab153828) at 1/1000 dilution

Lane 1 : 293T whole cell lysate

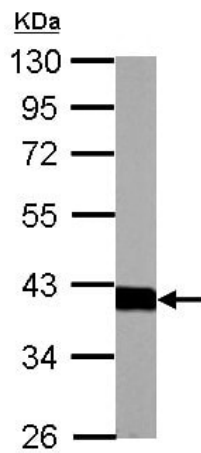
Lane 2 : A431 whole cell lysate

Lane 3 : HeLa whole cell lysate

Lysates/proteins at 30 µg per lane.

Predicted band size: 39 kDa

10% SDS PAGE

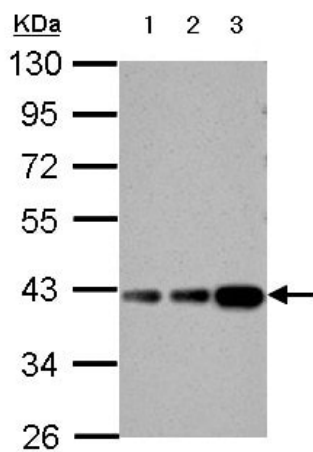


Western blot - Anti-Aldolase B antibody (ab153828)

Anti-Aldolase B antibody (ab153828) at 1/1000 dilution + PC12 whole cell lysate at 30 µg

Predicted band size: 39 kDa

10 % SDS-PAGE



Western blot - Anti-Aldolase B antibody (ab153828)

All lanes : Anti-Aldolase B antibody (ab153828) at 1/1000 dilution

Lane 1 : Neuro2A whole cell lysate

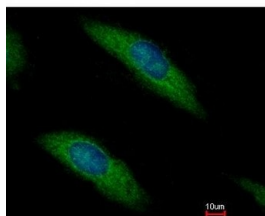
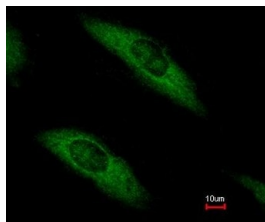
Lane 2 : GL261 whole cell lysate

Lane 3 : C8D30 whole cell lysate

Lysates/proteins at 30 µg per lane.

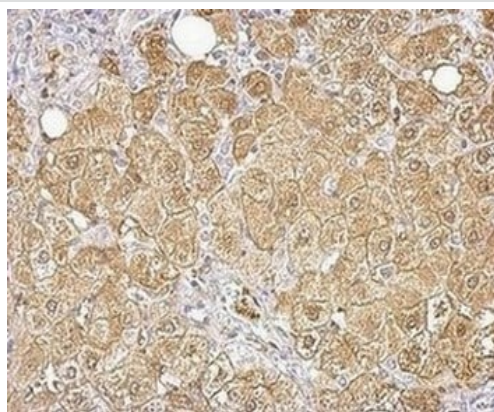
Predicted band size: 39 kDa

10 % SDS-PAGE



Immunofluorescence analysis of methanol fixed HeLa cells labeling Aldolase B with ab153828 at 1/500. Lower panel shows costaining with Hoechst 33342.

Immunocytochemistry/ Immunofluorescence - Anti-Aldolase B antibody (ab153828)



Immunohistochemical analysis of paraffin embedded Human hepatoma tissue labeling ALDOB with ab153828 at 1/500.

Immunohistochemistry (Formalin/PFA-fixed paraffin-embedded sections) - Anti-Aldolase B antibody (ab153828)

Please note: All products are "FOR RESEARCH USE ONLY. NOT FOR USE IN DIAGNOSTIC PROCEDURES"

Our Abpromise to you: Quality guaranteed and expert technical support

- Replacement or refund for products not performing as stated on the datasheet
- Valid for 12 months from date of delivery
- Response to your inquiry within 24 hours
- We provide support in Chinese, English, French, German, Japanese and Spanish
- Extensive multi-media technical resources to help you
- We investigate all quality concerns to ensure our products perform to the highest standards

If the product does not perform as described on this datasheet, we will offer a refund or replacement. For full details of the Abpromise, please visit <https://www.abcam.co.jp/abpromise> or contact our technical team.

Terms and conditions

- Guarantee only valid for products bought direct from Abcam or one of our authorized distributors