

Anti-ALDH7A1 antibody [EP1935Y] ab53278

リコンビナント **RabMAb**

6 References [画像数 8](#)

製品の概要

製品名	Anti-ALDH7A1 antibody [EP1935Y]
製品の詳細	Rabbit monoclonal [EP1935Y] to ALDH7A1
由来種	Rabbit
アプリケーション	適用あり: IP, Flow Cyt, ICC/IF, WB, IHC-P
種交差性	交差種: Mouse, Rat, Human
免疫原	Synthetic peptide. This information is proprietary to Abcam and/or its suppliers.
ポジティブ・コントロール	WB: HepG2, HT-29, and Human, Mouse, and Rat liver lysate. IHC-P: Human, Mouse, and Rat liver tissue. ICC/IF: HepG2 cells. Flow Cyt: HepG2 cells. IP: Human liver.
特記事項	<p>This product has switched from a hybridoma to recombinant production method on 7th September 2023.</p> <p>This product is a recombinant monoclonal antibody, which offers several advantages including:</p> <ul style="list-style-type: none"> - High batch-to-batch consistency and reproducibility - Improved sensitivity and specificity - Long-term security of supply - Animal-free production <p>For more information see here.</p> <p>Our RabMAb[®] technology is a patented hybridoma-based technology for making rabbit monoclonal antibodies. For details on our patents, please refer to RabMAb[®] patents.</p>

製品の特性

製品の状態	Liquid
保存方法	Shipped at 4°C. Store at -20°C. Stable for 12 months at -20°C.
バッファー	<p>pH: 7.20</p> <p>Preservative: 0.01% Sodium azide</p> <p>Constituents: 0.05% BSA, 40% Glycerol (glycerin, glycerine), 59% PBS</p>
精製度	Protein A purified
ポリ/モノ	モノクローナル
クローン名	EP1935Y

アイソタイプIgG

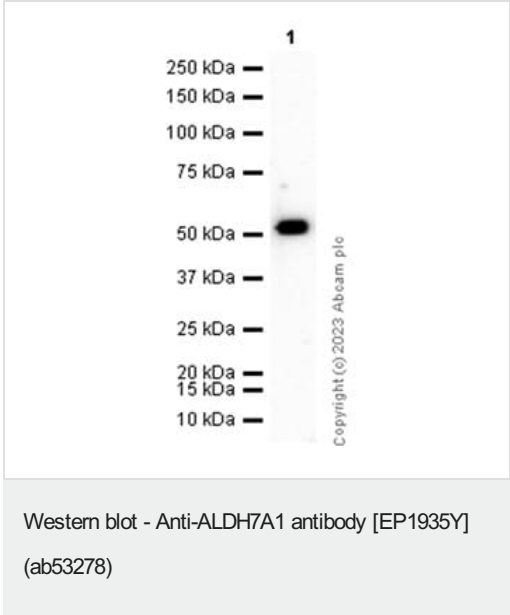
アプリケーション

The Abpromise guarantee Abpromise保証は、 次のテスト済みアプリケーションにおけるab53278の使用に適用されます
アプリケーションノートには、推奨の開始希釈率がありますが、適切な希釈率につきましてはご検討ください。

アプリケーション	Abreviews	特記事項
IP		1/20.
Flow Cyt		1/20.
ICC/IF		1/50.
WB		1/10000 - 1/50000.
IHC-P		1/1500. Perform heat mediated antigen retrieval with citrate buffer pH 6 before commencing with IHC staining protocol.

ターゲット情報

画像



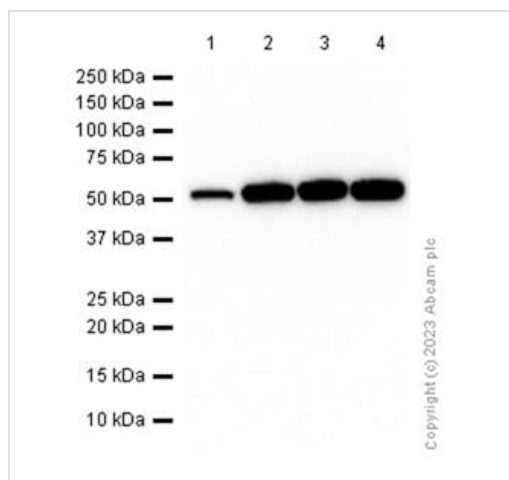
Anti-ALDH7A1 antibody [EP1935Y] - BSA and Azide free (**ab284700**) at 1/10000 dilution + HepG2 (Human hepatocellular carcinoma epithelial cell) whole cell lysate at 15 µg

Secondary

Goat Anti-Rabbit IgG H&L (HRP) (**ab97051**) at 1/20000 dilution

Observed band size: 55 kDa

Blocking and diluting buffer and concentration: 5% NFDM/TBST.



Western blot - Anti-ALDH7A1 antibody [EP1935Y] (ab53278)

All lanes : Anti-ALDH7A1 antibody [EP1935Y] (ab53278) at 1/2000 dilution

Lane 1 : HT-29 (Human colorectal adenocarcinoma epithelial cell) whole cell lysate

Lane 2 : Human liver lysate

Lane 3 : Mouse liver lysate

Lane 4 : Rat liver lysate

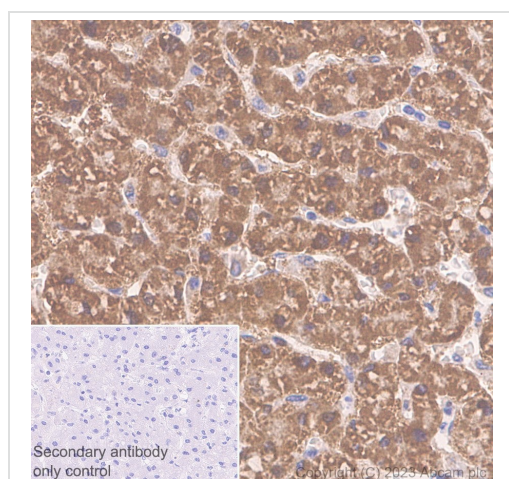
Lysates/proteins at 20 µg per lane.

Secondary

All lanes : Goat Anti-Rabbit IgG H&L (HRP) ([ab97051](#)) at 1/20000 dilution

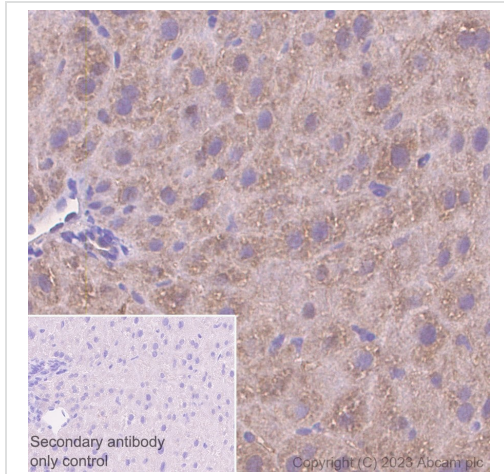
Observed band size: 55 kDa

Blocking and diluting buffer and concentration: 5% NFDM/TBST.



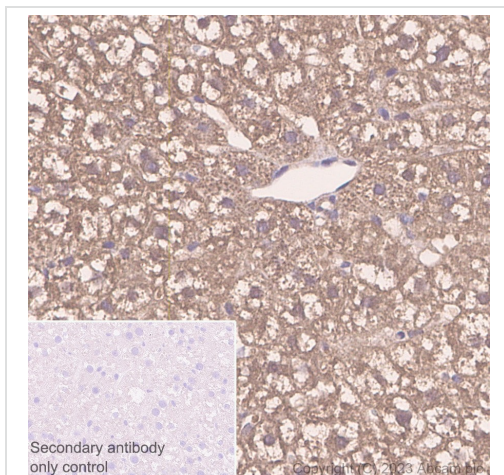
Immunohistochemistry (Formalin/PFA-fixed paraffin-embedded sections) - Anti-ALDH7A1 antibody [EP1935Y] (ab53278)

Immunohistochemical analysis of paraffin-embedded Human liver tissue labeling ALDH7A1 with ab53278 at 1/1500 dilution, followed by Rabbit specific IHC polymer detection kit HRP/DAB ([ab209101](#)) secondary antibody. The immunostaining was performed on a Leica Biosystems BOND® RX instrument. Counterstained with Hematoxylin. Heat mediated antigen retrieval was performed with Citrate buffer (pH 6.0) for 20 mins.



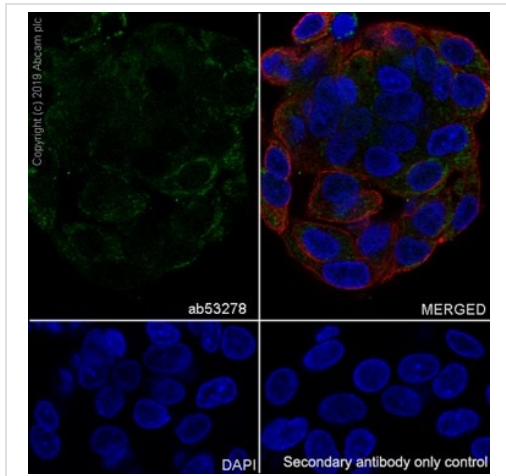
Immunohistochemistry (Formalin/PFA-fixed paraffin-embedded sections) - Anti-ALDH7A1 antibody [EP1935Y] (ab53278)

Immunohistochemical analysis of paraffin-embedded Mouse liver tissue labeling ALDH7A1 with ab53278 at 1/1500 dilution, followed by Rabbit specific IHC polymer detection kit HRP/DAB (**ab209101**) secondary antibody. The immunostaining was performed on a Leica Biosystems BOND® RX instrument. Counterstained with Hematoxylin. Heat mediated antigen retrieval was performed with Citrate buffer (pH 6.0) for 20 mins.



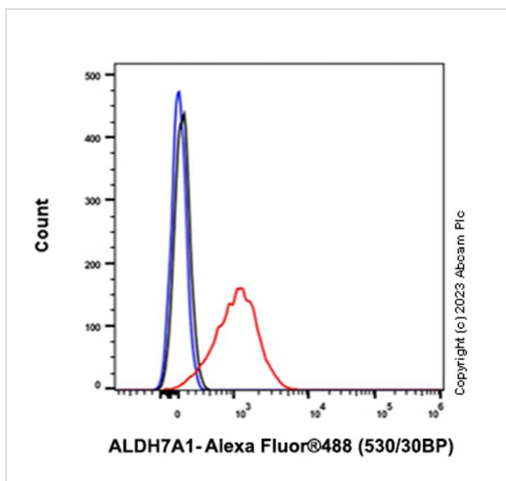
Immunohistochemistry (Formalin/PFA-fixed paraffin-embedded sections) - Anti-ALDH7A1 antibody [EP1935Y] (ab53278)

Immunohistochemical analysis of paraffin-embedded Rat liver tissue labeling ALDH7A1 with ab53278 at 1/1500 dilution, followed by Rabbit specific IHC polymer detection kit HRP/DAB (**ab209101**) secondary antibody. The immunostaining was performed on a Leica Biosystems BOND® RX instrument. Counterstained with Hematoxylin. Heat mediated antigen retrieval was performed with Citrate buffer (pH 6.0) for 20 mins.



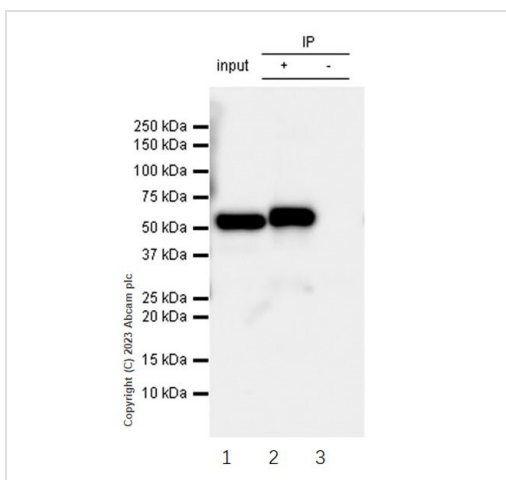
Immunocytochemistry/ Immunofluorescence - Anti-ALDH7A1 antibody [EP1935Y] (ab53278)

Immunofluorescent analysis of 4% Paraformaldehyde-fixed, 0.1% TritonX-100 permeabilized HepG2 cells labelling ALDH7A1 with ab53278 at 1/50 dilution, followed by Goat Anti-Rabbit IgG H&L (Alexa Fluor® 488) preadsorbed (**ab150081**) at 1/1000 dilution at RT for 45 min. Alexa Fluor® 594 Anti-alpha Tubulin antibody [DM1A] - Microtubule Marker (**ab195889**) at 1/200 dilution, was co-incubated with ab53278 overnight at 4° C. Nucleus were visualized using DAPI.



Flow Cytometry - Anti-ALDH7A1 antibody [EP1935Y] (ab53278)

HepG2 cells were fixed with 100µl 4% PFA for 10 min at RT, then permeabilized with 100µl 90% methanol for 30 min (-20° C) followed by blocking with 10% goat serum for 1h at room temperature. Incubate ab53278 for 30 min at room temperature (RT) and then incubate Goat Anti-Rabbit IgG H&L (Alexa Fluor® 488) (**ab150081**) for 30 min at room temperature.



Immunoprecipitation - Anti-ALDH7A1 antibody [EP1935Y] (ab53278)

ALDH7A1 was immunoprecipitated from 0.35 mg of human liver tissue lysate with the antibody at 1/20 dilution. Western blot was performed from the immunoprecipitated using antibody at 1/1000 dilution. VeriBlot for IP secondary antibody(HRP)(**ab131366**) was used as secondary antibody at 1/5000 dilution.

Lane 1: Human liver tissue lysate 10 µg.

Lane 2: Human liver tissue lysate.

Lane 3: Rabbit monoclonal IgG (**ab172730**) instead of ab53278 in human liver tissue lysate.

Please note: All products are "FOR RESEARCH USE ONLY. NOT FOR USE IN DIAGNOSTIC PROCEDURES"

Our Abpromise to you: Quality guaranteed and expert technical support

- Replacement or refund for products not performing as stated on the datasheet
- Valid for 12 months from date of delivery
- Response to your inquiry within 24 hours

- We provide support in Chinese, English, French, German, Japanese and Spanish
- Extensive multi-media technical resources to help you
- We investigate all quality concerns to ensure our products perform to the highest standards

If the product does not perform as described on this datasheet, we will offer a refund or replacement. For full details of the Abpromise, please visit <https://www.abcam.co.jp/abpromise> or contact our technical team.

Terms and conditions

- Guarantee only valid for products bought direct from Abcam or one of our authorized distributors