


Anti-ALDH7A1 antibody [EP1934Y] ab68192

リコンビナント RabMAb[®]

3 References [画像数 3](#)

製品の概要

製品名	Anti-ALDH7A1 antibody [EP1934Y]
製品の詳細	Rabbit monoclonal [EP1934Y] to ALDH7A1
由来種	Rabbit
アプリケーション	適用あり: WB, IHC-P
種交差性	交差種: Human 交差が予測される動物種: Mouse 
免疫原	Synthetic peptide within Human ALDH7A1 aa 1-100 (N terminal). The exact sequence is proprietary.
ポジティブ・コントロール	WB: Lysates from: HepG2 cells, HeLa cells, SW480 cells and SH-SY5Y cells. IHC-P: Human liver tissue.
特記事項	<p>This product is a recombinant monoclonal antibody, which offers several advantages including:</p> <ul style="list-style-type: none"> - High batch-to-batch consistency and reproducibility - Improved sensitivity and specificity - Long-term security of supply - Animal-free production <p>For more information see here.</p> <p>Our RabMAb[®] technology is a patented hybridoma-based technology for making rabbit monoclonal antibodies. For details on our patents, please refer to RabMAb[®] patents.</p> <p>Rat: We have preliminary internal testing data to indicate this antibody may not react with this species. Please contact us for more information.</p>

製品の特性

製品の状態	Liquid
保存方法	Shipped at 4°C. Upon delivery aliquot and store at -20°C. Avoid freeze / thaw cycles.
バッファー	<p>pH: 7.2</p> <p>Preservative: 0.05% Sodium azide</p> <p>Constituents: 0.1% BSA, 40% Glycerol (glycerin, glycerine), 9.85% Tris glycine, 50% Tissue culture supernatant</p>

精製度	Tissue culture supernatant
ポリ/モノ	モノクローナル
クローン名	EP1934Y
アイソタイプ	IgG

アプリケーション

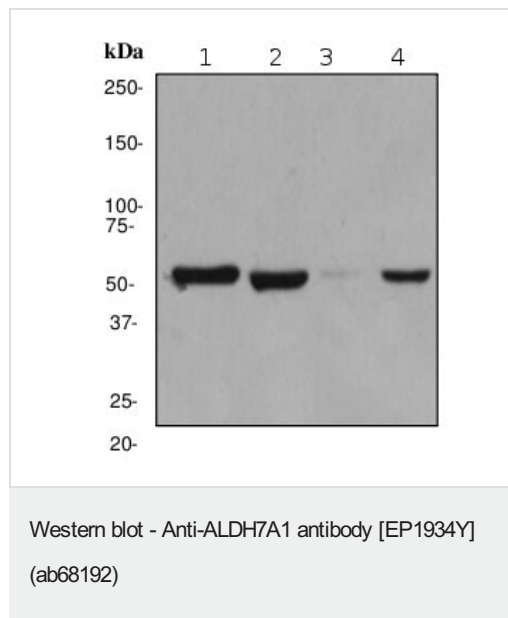
The Abpromise guarantee **Abpromise保証は、次のテスト済みアプリケーションにおけるab68192の使用に適用されます**

アプリケーションノートには、推奨の開始希釈率がありますが、適切な希釈率につきましてはご検討ください。

アプリケーション	Abreviews	特記事項
WB		1/5000 - 1/10000. Detects a band of approximately 55 kDa (predicted molecular weight: 55 kDa).
IHC-P		1/100 - 1/250. Perform heat mediated antigen retrieval before commencing with IHC staining protocol.

ターゲット情報

画像



All lanes : Anti-ALDH7A1 antibody [EP1934Y] (ab68192)

Lane 1 : HepG2 cell lysate

Lane 2 : HeLa cell lysate

Lane 3 : SW480 cell lysate

Lane 4 : SH-SY5Y cell lysate

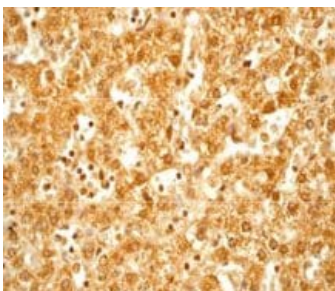
Lysates/proteins at 10 µg per lane.

Secondary

All lanes : HRP conjugated Goat anti-rabbit at 1/2000 dilution

Predicted band size: 55 kDa

Observed band size: 55 kDa



Human liver tissue stained by ab68192 at 1/100 dilution.

Perform heat mediated antigen retrieval before commencing with IHC staining protocol.

Immunohistochemistry (Formalin/PFA-fixed paraffin-embedded sections) - Anti-ALDH7A1 antibody [EP1934Y] (ab68192)

Why choose a recombinant antibody?



Research with confidence
Consistent and reproducible results



Long-term and scalable supply
Recombinant technology



Success from the first experiment
Confirmed specificity



Ethical standards compliant
Animal-free production

Anti-ALDH7A1 antibody [EP1934Y] (ab68192)

Please note: All products are "FOR RESEARCH USE ONLY. NOT FOR USE IN DIAGNOSTIC PROCEDURES"

Our Abpromise to you: Quality guaranteed and expert technical support

- Replacement or refund for products not performing as stated on the datasheet
- Valid for 12 months from date of delivery
- Response to your inquiry within 24 hours
- We provide support in Chinese, English, French, German, Japanese and Spanish
- Extensive multi-media technical resources to help you
- We investigate all quality concerns to ensure our products perform to the highest standards

If the product does not perform as described on this datasheet, we will offer a refund or replacement. For full details of the Abpromise, please visit <https://www.abcam.co.jp/abpromise> or contact our technical team.

Terms and conditions

- Guarantee only valid for products bought direct from Abcam or one of our authorized distributors