

Anti-ALDH3A1 antibody ab76976

25 References [画像数 1](#)

製品の概要

製品名	Anti-ALDH3A1 antibody
製品の詳細	Rabbit polyclonal to ALDH3A1
由来種	Rabbit
特異性	This antibody is predicted to have no cross reactivity to ALDH3A2.
アプリケーション	適用あり: WB, ICC/IF, IHC-P
種交差性	交差種: Mouse, Rat, Human
免疫原	Synthetic peptide (Human): a 13 amino acid peptide from near the C terminus of human ALDH3A1. (NP_000682).
特記事項	<p>The Life Science industry has been in the grips of a reproducibility crisis for a number of years. Abcam is leading the way in addressing this with our range of recombinant monoclonal antibodies and knockout edited cell lines for gold-standard validation. Please check that this product meets your needs before purchasing.</p> <p>If you have any questions, special requirements or concerns, please send us an inquiry and/or contact our Support team ahead of purchase. Recommended alternatives for this product can be found below, along with publications, customer reviews and Q&As</p>

製品の特性

製品の状態	Liquid
保存方法	Shipped at 4°C. Store at +4°C.
バッファー	pH: 7.2 Preservative: 0.02% Sodium azide Constituent: PBS
精製度	Immunogen affinity purified
ポリ/モノ	ポリクローナル
アイソタイプ	IgG

アプリケーション

The Abpromise guarantee

Abpromise保証は、次のテスト済みアプリケーションにおけるab76976の使用に適用されます

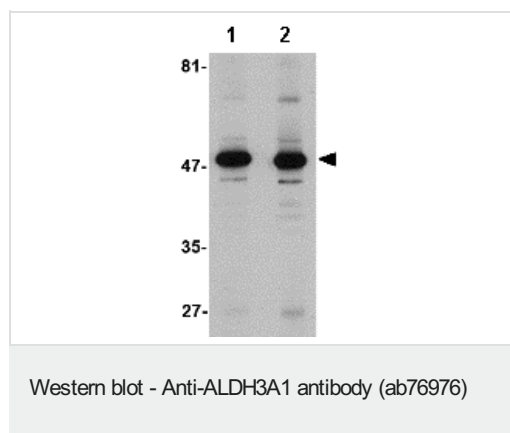
アプリケーションノートには、推奨の開始希釈率がありますが、適切な希釈率につきましてはご確認ください。

アプリケーション	Abreviews	特記事項
WB		Use a concentration of 1 - 2 µg/ml. Predicted molecular weight: 50 kDa.
ICC/IF		Use at an assay dependent concentration.
IHC-P		Use at an assay dependent concentration.

ターゲット情報

機能	ALDHs play a major role in the detoxification of alcohol-derived acetaldehyde. They are involved in the metabolism of corticosteroids, biogenic amines, neurotransmitters, and lipid peroxidation. This protein preferentially oxidizes aromatic aldehyde substrates. It may play a role in the oxidation of toxic aldehydes.
組織特異性	High levels in stomach, esophagus and lung; low level in the liver and kidney.
配列類似性	Belongs to the aldehyde dehydrogenase family.
細胞内局在	Cytoplasm.

画像



Lane 1 : Anti-ALDH3A1 antibody (ab76976) at 1 µg/ml

Lane 2 : Anti-ALDH3A1 antibody (ab76976) at 2 µg/ml

All lanes : human stomach lysate

Lysates/proteins at 15 µg per lane.

Predicted band size: 50 kDa

Observed band size: 50 kDa

Please note: All products are "FOR RESEARCH USE ONLY. NOT FOR USE IN DIAGNOSTIC PROCEDURES"

Our Abpromise to you: Quality guaranteed and expert technical support

- Replacement or refund for products not performing as stated on the datasheet
- Valid for 12 months from date of delivery
- Response to your inquiry within 24 hours
- We provide support in Chinese, English, French, German, Japanese and Spanish
- Extensive multi-media technical resources to help you

- We investigate all quality concerns to ensure our products perform to the highest standards

If the product does not perform as described on this datasheet, we will offer a refund or replacement. For full details of the Abpromise, please visit <https://www.abcam.co.jp/abpromise> or contact our technical team.

Terms and conditions

- Guarantee only valid for products bought direct from Abcam or one of our authorized distributors