

Anti-ALDH2 antibody [EPR4494] ab133306

KO 評価済 リコンビナント RabMAb

2 References 画像数 3

製品の概要

製品名	Anti-ALDH2 antibody [EPR4494]
製品の詳細	Rabbit monoclonal [EPR4494] to ALDH2
由来種	Rabbit
特異性	The antibody immunogen has 87% homology with ALDH1A2 (O94788) and ALDH1A1 (P00352). Therefore a cross-reactivity with these proteins is likely.
アプリケーション	適用あり: WB 適用なし: Flow Cyt, ICC/IF or IHC-P
種交差性	交差種: Mouse, Rat, Human
免疫原	Synthetic peptide. This information is proprietary to Abcam and/or its suppliers.
ポジティブ・コントロール	WB: SW480 and HepG2 cell lysates; Human heart, fetal liver, mouse liver, rat liver, and mouse lung lysates.
特記事項	This product is a recombinant monoclonal antibody, which offers several advantages including: <ul style="list-style-type: none"> - High batch-to-batch consistency and reproducibility - Improved sensitivity and specificity - Long-term security of supply - Animal-free production For more information see here . Our RabMAb [®] technology is a patented hybridoma-based technology for making rabbit monoclonal antibodies. For details on our patents, please refer to RabMAb[®] patents .

製品の特性

製品の状態	Liquid
保存方法	Shipped at 4°C. Upon delivery aliquot and store at -20°C. Avoid repeated freeze / thaw cycles.
バッファー	pH: 7.2 Preservative: 0.05% Sodium azide Constituents: 0.1% BSA, 40% Glycerol (glycerin, glycerine), 9.85% Tris glycine, 50% Tissue culture supernatant
精製度	Tissue culture supernatant
ポリ/モノ	モノクローナル

クローン名EPR4494
アイソタイプIgG

アプリケーション

The Abpromise guarantee **Abpromise保証は、** 次のテスト済みアプリケーションにおけるab133306の使用に適用されます
アプリケーションノートには、推奨の開始希釈率がありますが、適切な希釈率につきましてはご検討ください。

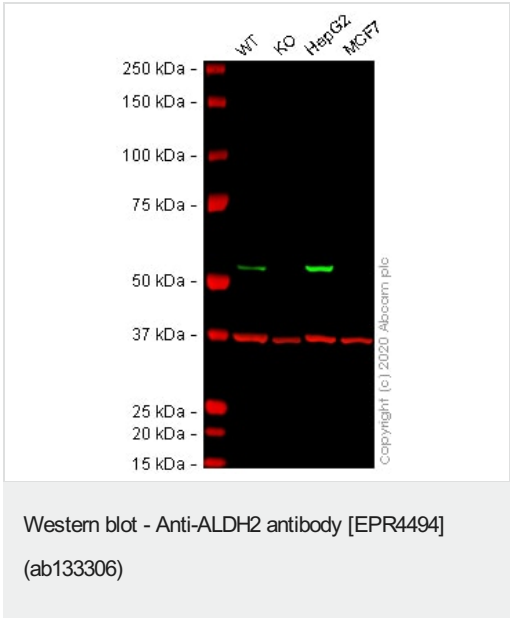
アプリケーション	Abreviews	特記事項
WB		1/1000 - 1/10000. Predicted molecular weight: 56 kDa.

追加情報 Is unsuitable for Flow Cyt, ICC/IF or IHC-P.

ターゲット情報

パスウェイ Alcohol metabolism; ethanol degradation; acetate from ethanol: step 2/2.
配列類似性 Belongs to the aldehyde dehydrogenase family.
細胞内局在 Mitochondrion matrix.

画像



All lanes : Anti-ALDH2 antibody [EPR4494] (ab133306) at 1/1000 dilution

Lane 1 : Wild-type SW480 (Human colorectal adenocarcinoma cell line) whole cell lysate

Lane 2 : ALDH2 knockout SW480 (Human colorectal adenocarcinoma cell line) whole cell lysate

Lane 3 : Hep G2 (Human liver hepatocellular carcinoma cell line) whole cell lysate

Lane 4 : MCF7 (Human breast adenocarcinoma cell line) whole cell lysate

Lysates/proteins at 20 µg per lane.

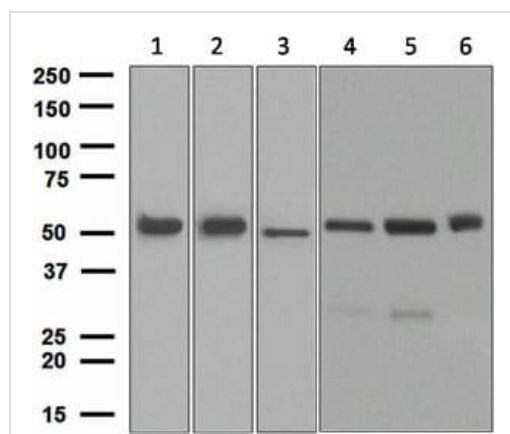
Performed under reducing conditions.

Predicted band size: 56 kDa

Observed band size: 53 kDa

Lanes 1 - 4: Merged signal (red and green). Green - ab133306 observed at 53 kDa. Red - loading control, **ab8245** (Mouse anti-GAPDH antibody [6C5]) observed at 37kDa.

ab133306 was shown to react with ALDH2 in wild-type SW480 cells in western blot. Loss of signal was observed when ALDH2 knockout sample was used. Wild-type and ALDH2 knockout cell lysates were subjected to SDS-PAGE. Membranes were blocked in 3% milk before incubation with ab133306 and **ab8245** (Mouse anti-GAPDH antibody [6C5]) overnight at 4°C at a 1 in 1000 Dilution and a 1 in 20000 dilution respectively. Blots were incubated with Goat anti-Rabbit IgG H&L (IRDye® 800CW) preabsorbed (**ab216773**) and Goat anti-Mouse IgG H&L (IRDye® 680RD) preabsorbed (**ab216776**) secondary antibodies at 1 in 20000 dilution for 1 hour at room temperature before imaging.



Western blot - Anti-ALDH2 antibody [EPR4494]
(ab133306)

All lanes : Anti-ALDH2 antibody [EPR4494] (ab133306) at 1/1000 dilution

Lane 1 : HepG2 lysates

Lane 2 : Human heart lysates

Lane 3 : Fetal liver lysates

Lane 4 : Mouse liver lysates

Lane 5 : Rat liver lysates

Lane 6 : Mouse lung lysates

Lysates/proteins at 10 µg per lane.

Secondary

All lanes : HRP labelled goat anti-rabbit at 1/2000 dilution

Predicted band size: 56 kDa

Why choose a recombinant antibody?



Research with confidence
Consistent and reproducible results



Long-term and scalable supply
Recombinant technology



Success from the first experiment
Confirmed specificity



Ethical standards compliant
Animal-free production

Anti-ALDH2 antibody [EPR4494] (ab133306)

Please note: All products are "FOR RESEARCH USE ONLY. NOT FOR USE IN DIAGNOSTIC PROCEDURES"

Our Abpromise to you: Quality guaranteed and expert technical support

- Replacement or refund for products not performing as stated on the datasheet
- Valid for 12 months from date of delivery
- Response to your inquiry within 24 hours
- We provide support in Chinese, English, French, German, Japanese and Spanish
- Extensive multi-media technical resources to help you
- We investigate all quality concerns to ensure our products perform to the highest standards

If the product does not perform as described on this datasheet, we will offer a refund or replacement. For full details of the Abpromise, please visit <https://www.abcam.co.jp/abpromise> or contact our technical team.

Terms and conditions

- Guarantee only valid for products bought direct from Abcam or one of our authorized distributors