

Anti-ALDH2 antibody ab115198

★★★★★ **2 Abreviews** 画像数 3

製品の概要

製品名	Anti-ALDH2 antibody
製品の詳細	Rabbit polyclonal to ALDH2
由来種	Rabbit
アプリケーション	適用あり: Flow Cyt (Intra), WB, IHC-P
種交差性	交差種: Human
免疫原	Synthetic peptide conjugated to KLH, corresponding to amino acids from the N terminal region of ALDH2.
ポジティブ・コントロール	IHC-P: Human Liver tissue. Flow Cyt (Intra): HepG2 cells. WB: 293 cell lysate transiently transfected with the ALDH2 gene.
特記事項	<p>The Life Science industry has been in the grips of a reproducibility crisis for a number of years. Abcam is leading the way in addressing this with our range of recombinant monoclonal antibodies and knockout edited cell lines for gold-standard validation. Please check that this product meets your needs before purchasing.</p> <p>If you have any questions, special requirements or concerns, please send us an inquiry and/or contact our Support team ahead of purchase. Recommended alternatives for this product can be found below, along with publications, customer reviews and Q&As</p>

製品の特性

製品の状態	Liquid
保存方法	Shipped at 4°C. Store at +4°C short term (1-2 weeks). Upon delivery aliquot. Store at -20°C long term.
バッファー	<p>pH: 7.4</p> <p>Preservative: 0.09% Sodium azide</p> <p>Constituent: 99% PBS</p>
精製度	Protein A purified
ポリ/モノ	ポリクローナル
アイソタイプ	IgG

アプリケーション

The Abpromise guarantee

Abpromise保証は、次のテスト済みアプリケーションにおけるab115198の使用に適用されます

アプリケーションノートには、推奨の開始希釈率がありますが、適切な希釈率につきましてはご確認ください。

アプリケーション	Abreviews	特記事項
Flow Cyt (Intra)		Use at an assay dependent concentration. ab171870 - Rabbit polyclonal IgG, is suitable for use as an isotype control with this antibody.
WB	★★★★★ (1)	1/50 - 1/100. Predicted molecular weight: 56 kDa.
IHC-P		Use a concentration of 10 µg/ml. Perform heat mediated antigen retrieval with citrate buffer pH 6 before commencing with IHC staining protocol.

ターゲット情報

パスウェイ

Alcohol metabolism; ethanol degradation; acetate from ethanol: step 2/2.

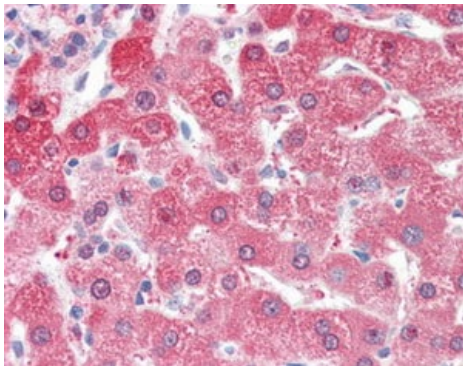
配列類似性

Belongs to the aldehyde dehydrogenase family.

細胞内局在

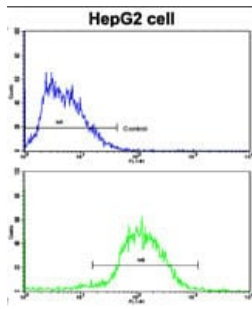
Mitochondrion matrix.

画像



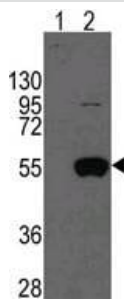
ab115198 at 10 µg/ml staining ALDH2 Formalin-fixed, Paraffin-embedded Human Liver tissue by Immunohistochemistry followed by biotinylated secondary antibody, alkaline phosphatase-streptavidin and chromogen.

Immunohistochemistry (Formalin/PFA-fixed paraffin-embedded sections) - Anti-ALDH2 antibody (ab115198)



Flow Cytometry (Intracellular) - Anti-ALDH2 antibody (ab115198)

Intracellular flow cytometric analysis of HepG2 cells, staining ALDH2 with ab115198 (bottom histogram), compared to a negative control cell (top histogram). A FITC-conjugated goat-anti-rabbit IgG was used as the secondary antibody.



Western blot - Anti-ALDH2 antibody (ab115198)

All lanes : Anti-ALDH2 antibody (ab115198) at 1/50 dilution

Lane 1 : 293 cell lysate, non-transfected

Lane 2 : 293 cell lysate, transiently transfected with ALDH2 gene

Lysates/proteins at 2 µg per lane.

Predicted band size: 56 kDa

Please note: All products are "FOR RESEARCH USE ONLY. NOT FOR USE IN DIAGNOSTIC PROCEDURES"

Our Abpromise to you: Quality guaranteed and expert technical support

- Replacement or refund for products not performing as stated on the datasheet
- Valid for 12 months from date of delivery
- Response to your inquiry within 24 hours
- We provide support in Chinese, English, French, German, Japanese and Spanish
- Extensive multi-media technical resources to help you
- We investigate all quality concerns to ensure our products perform to the highest standards

If the product does not perform as described on this datasheet, we will offer a refund or replacement. For full details of the Abpromise, please visit <https://www.abcam.co.jp/abpromise> or contact our technical team.

Terms and conditions

- Guarantee only valid for products bought direct from Abcam or one of our authorized distributors