


Anti-ALDH1L1 antibody - Astrocyte Marker ab87117

★★★★☆ [11 Abreviews](#) [61 References](#) [画像数 1](#)

製品の概要

製品名	Anti-ALDH1L1 antibody - Astrocyte Marker
製品の詳細	Rabbit polyclonal to ALDH1L1 - Astrocyte Marker
由来種	Rabbit
アプリケーション	適用あり: WB
種交差性	交差種: Mouse, Rat 交差が予測される動物種: Orangutan 
免疫原	Synthetic peptide within Mouse ALDH1L1 aa 300-400 conjugated to keyhole limpet haemocyanin. The exact sequence is proprietary. Database link: Q8R0Y6 (Peptide available as ab103935)
特記事項	<p>The Life Science industry has been in the grips of a reproducibility crisis for a number of years. Abcam is leading the way in addressing this with our range of recombinant monoclonal antibodies and knockout edited cell lines for gold-standard validation. Please check that this product meets your needs before purchasing.</p> <p>If you have any questions, special requirements or concerns, please send us an inquiry and/or contact our Support team ahead of purchase. Recommended alternatives for this product can be found below, along with publications, customer reviews and Q&As</p>

製品の特性

製品の状態	Liquid
保存方法	Shipped at 4°C. Store at +4°C short term (1-2 weeks). Upon delivery aliquot. Store at -20°C or -80°C. Avoid freeze / thaw cycle.
バッファー	pH: 7.40 Preservative: 0.02% Sodium azide Constituent: PBS
精製度	Immunogen affinity purified

Batches of this product that have a concentration < 1mg/ml may have BSA added as a stabilising agent. If you would like information about the formulation of a specific lot, please contact our scientific support team who will be happy to help.

ポリ/モノ ポリクローナル
アイソタイプ IgG

アプリケーション

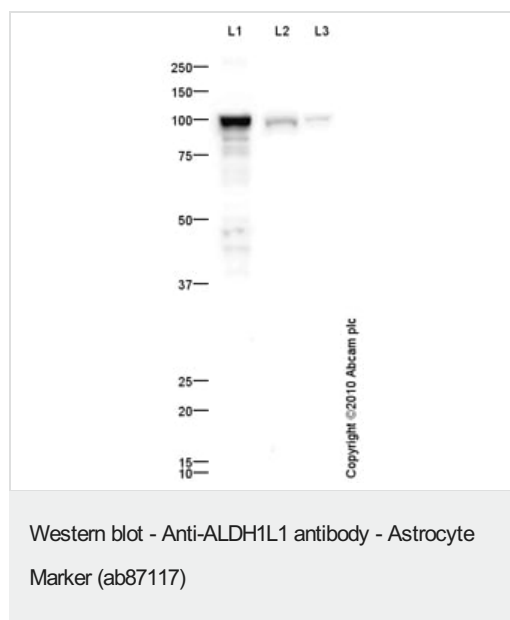
The Abpromise guarantee **Abpromise保証は、** 次のテスト済みアプリケーションにおけるab87117の使用に適用されず
アプリケーションノートには、推奨の開始希釈率がありますが、適切な希釈率につきましてはご検討ください。

アプリケーション	Abreviews	特記事項
WB	★★★★★ (2)	Use a concentration of 1 µg/ml. Detects a band of approximately 100 kDa (predicted molecular weight: 99 kDa).

ターゲット情報

組織特異性 Highly expressed in liver, pancreas and kidney.
配列類似性 In the N-terminal section; belongs to the GART family.
 In the C-terminal section; belongs to the aldehyde dehydrogenase family. ALDH1L subfamily.
 Contains 1 acyl carrier domain.
細胞内局在 Cytoplasm.

画像



Western blot - Anti-ALDH1L1 antibody - Astrocyte Marker (ab87117)

All lanes : Anti-ALDH1L1 antibody - Astrocyte Marker (ab87117)
at 1 µg/ml

Lane 1 : Liver (Mouse) Tissue Lysate

Lane 2 : Brain (Mouse) Tissue Lysate

Lane 3 : Brain (Rat) Tissue Lysate

Lysates/proteins at 10 µg per lane.

Secondary

All lanes : Goat polyclonal to Rabbit IgG - H&L - Pre-Adsorbed (HRP) at 1/3000 dilution

Developed using the ECL technique.

Performed under reducing conditions.

Predicted band size: 99 kDa

Observed band size: 100 kDa

Exposure time: 4 minutes

Please note: All products are "FOR RESEARCH USE ONLY. NOT FOR USE IN DIAGNOSTIC PROCEDURES"

Our Abpromise to you: Quality guaranteed and expert technical support

- Replacement or refund for products not performing as stated on the datasheet
- Valid for 12 months from date of delivery
- Response to your inquiry within 24 hours

- We provide support in Chinese, English, French, German, Japanese and Spanish
- Extensive multi-media technical resources to help you
- We investigate all quality concerns to ensure our products perform to the highest standards

If the product does not perform as described on this datasheet, we will offer a refund or replacement. For full details of the Abpromise, please visit <https://www.abcam.co.jp/abpromise> or contact our technical team.

Terms and conditions

- Guarantee only valid for products bought direct from Abcam or one of our authorized distributors