

Anti-ALDH1L1 + ALDH1L2 antibody [EPR12743(B)] - Astrocyte Marker ab177463

リコンビナント **RabMAb**

★★★★★ **1 Abreviews** **7 References** 画像数 8

製品の概要

製品名	Anti-ALDH1L1 + ALDH1L2 antibody [EPR12743(B)] - Astrocyte Marker
製品の詳細	Rabbit monoclonal [EPR12743(B)] to ALDH1L1+ALDH1L2 - Astrocyte Marker
由来種	Rabbit
アプリケーション	適用あり: IHC-P, WB, IHC-Fr 適用なし: Flow Cyt or ICC/IF
種交差性	交差種: Mouse, Rat, Human
免疫原	Synthetic peptide. This information is proprietary to Abcam and/or its suppliers.
ポジティブ・コントロール	HepG2, 293T, fetal brain, fetal kidney and fetal liver lysates. Human kidney and Human liver tissue. IHC-Fr: Mouse and rat liver tissue.
特記事項	This product is a recombinant monoclonal antibody, which offers several advantages including: <ul style="list-style-type: none"> - High batch-to-batch consistency and reproducibility - Improved sensitivity and specificity - Long-term security of supply - Animal-free production For more information see here . Our RabMAb [®] technology is a patented hybridoma-based technology for making rabbit monoclonal antibodies. For details on our patents, please refer to RabMAb[®] patents .

製品の特性

製品の状態	Liquid
保存方法	Shipped at 4°C. Store at +4°C short term (1-2 weeks). Upon delivery aliquot. Store at -20°C long term. Avoid freeze / thaw cycle.
バッファー	pH: 7.20 Preservative: 0.01% Sodium azide Constituents: 9% PBS, 40% Glycerol (glycerin, glycerine), 0.05% BSA, 50% Tissue culture supernatant
精製度	Protein A purified

ポリ/モノ	モノクローナル
クローン名	EPR12743(B)
アイソタイプ	IgG

アプリケーション

The Abpromise guarantee **Abpromise保証は、**次のテスト済みアプリケーションにおけるab177463の使用に適用されます
 アプリケーションノートには、推奨の開始希釈率がありますが、適切な希釈率につきましてはご検討ください。

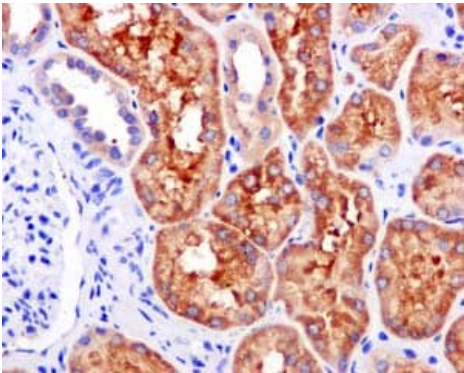
アプリケーション	Abreviews	特記事項
IHC-P	★★★★★ (1)	1/50 - 1/100. Perform heat mediated antigen retrieval with citrate buffer pH 6 before commencing with IHC staining protocol.
WB		1/1000 - 1/10000. Predicted molecular weight: 99 kDa.
IHC-Fr		1/100.

追加情報 Is unsuitable for Flow Cyt or ICC/IF.

ターゲット情報

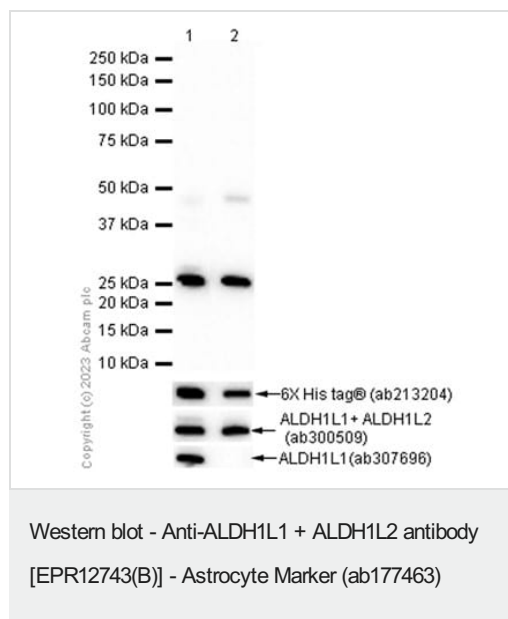
細胞内局在 ALDH1L1: Cytoplasm.

画像



Immunohistochemistry (Formalin/PFA-fixed paraffin-embedded sections) - Anti-ALDH1L1+ALDH1L2 antibody [EPR12743(B)] - Astrocyte Marker (ab177463)

Immunohistochemical analysis of paraffin-embedded Human kidney tissue labeling ALDH1L1+ALDH1L2 with ab177463 at 1/50 dilution. Antigen retrieval was heat mediated with citrate buffer pH 6 before commencing with IHC staining protocol.



All lanes : Anti-ALDH1L1 + ALDH1L2 antibody [EPR12743(B)] - Astrocyte Marker (ab177463) at 1/1000 dilution

Lane 1 : His-tagged mouse ALDH1L1 fragment recombinant protein (aa162-366)

Lane 2 : His-tagged mouse ALDH1L2 fragment recombinant protein (aa184-387)

Lysates/proteins at 0.01 µg per lane.

Secondary

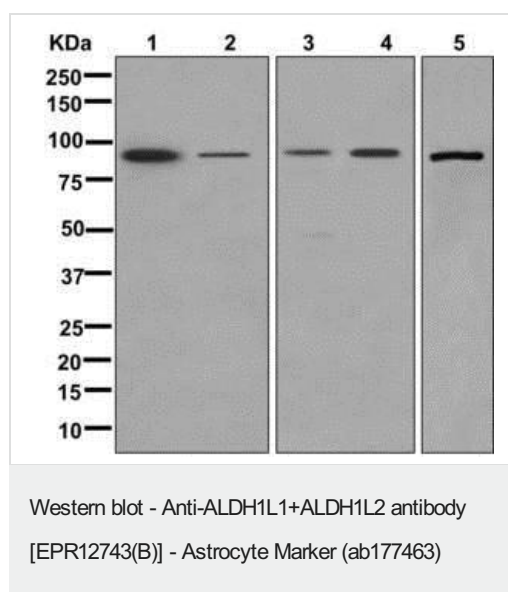
All lanes : Goat Anti-Rabbit IgG H&L (HRP) ([ab97051](#)) at 1/20000 dilution

Predicted band size: 99 kDa

Observed band size: 25 kDa

Exposure time: 20 seconds

Blocking/Diluting buffer and concentration: 5% NFDM/TBST



All lanes : Anti-ALDH1L1 + ALDH1L2 antibody [EPR12743(B)] - Astrocyte Marker (ab177463) at 1/1000 dilution

Lane 1 : HepG2 lysate

Lane 2 : 293T cell lysate

Lane 3 : Fetal brain lysate

Lane 4 : Fetal kidney lysate

Lane 5 : Fetal liver lysate

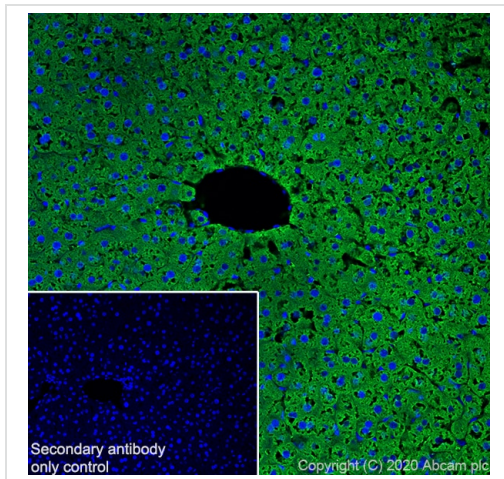
Lysates/proteins at 10 µg per lane.

Secondary

All lanes : Goat-anti-rabbit HRP at 1/2000 dilution

Developed using the ECL technique.

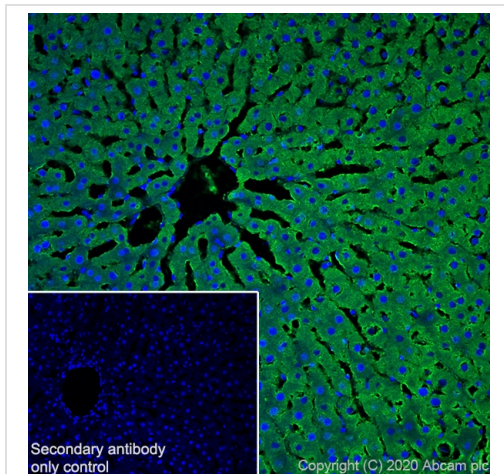
Predicted band size: 99 kDa



Immunohistochemistry (Frozen sections) - Anti-ALDH1L1+ALDH1L2 antibody [EPR12743(B)] - Astrocyte Marker (ab177463)

Immunohistochemistry (Frozen sections) analysis of mouse liver tissue labeling ALDH1L1+ALDH1L2 with ab177463 at 1/100 dilution. Tissue was fixed with 4% PFA and permeabilised with 0.2% Triton X-100. **ab150077**, Goat Anti-Rabbit IgG H&L (Alexa Fluor® 488) at 1/1000 dilution was used as the secondary antibody. DAPI (blue) was used as nucleare counterstain. Antigen retrieval was heat mediated using sodium citrate buffer (10mM citrate pH 6.0 + 0.05% Tween-20).

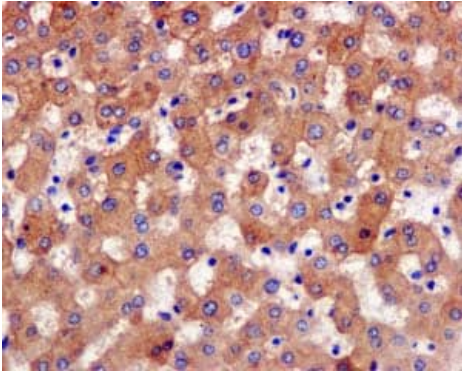
Cytoplasmic staining on mouse liver.



Immunohistochemistry (Frozen sections) - Anti-ALDH1L1+ALDH1L2 antibody [EPR12743(B)] - Astrocyte Marker (ab177463)

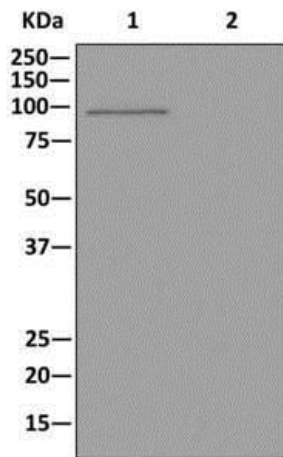
Immunohistochemistry (Frozen sections) analysis of rat liver tissue labeling ALDH1L1+ALDH1L2 with ab177463 at 1/100 dilution. Tissue was fixed with 4% PFA and permeabilised with 0.2% Triton X-100. **ab150077**, Goat Anti-Rabbit IgG H&L (Alexa Fluor® 488) at 1/1000 dilution was used as the secondary antibody. DAPI (blue) was used as nucleare counterstain. Antigen retrieval was heat mediated using sodium citrate buffer (10mM citrate pH 6.0 + 0.05% Tween-20).

Cytoplasmic staining on rat liver.



Immunohistochemistry (Formalin/PFA-fixed paraffin-embedded sections) - Anti-ALDH1L1+ALDH1L2 antibody [EPR12743(B)] - Astrocyte Marker (ab177463)

Immunohistochemical analysis of paraffin-embedded Human liver tissue labeling ALDH1L1+ALDH1L2 with ab177463 at 1/50 dilution. Antigen retrieval was heat mediated with citrate buffer pH 6 before commencing with IHC staining protocol.



Western blot - Anti-ALDH1L1+ALDH1L2 antibody [EPR12743(B)] - Astrocyte Marker (ab177463)

All lanes : Anti-ALDH1L1 + ALDH1L2 antibody [EPR12743(B)] - Astrocyte Marker (ab177463) at 1/1000 dilution

Lane 1 : Fetal liver lysate at 10 µg

Lane 2 : 1X PBS (negative control)

Secondary

All lanes : Goat-anti-rabbit HRP at 1/2000 dilution

Developed using the ECL technique.

Predicted band size: 99 kDa

Why choose a recombinant antibody?



Anti-ALDH1L1+ALDH1L2 antibody [EPR12743(B)] - Astrocyte Marker (ab177463)

Please note: All products are "FOR RESEARCH USE ONLY. NOT FOR USE IN DIAGNOSTIC PROCEDURES"

Our Abpromise to you: Quality guaranteed and expert technical support

- Replacement or refund for products not performing as stated on the datasheet
- Valid for 12 months from date of delivery
- Response to your inquiry within 24 hours

- We provide support in Chinese, English, French, German, Japanese and Spanish
- Extensive multi-media technical resources to help you
- We investigate all quality concerns to ensure our products perform to the highest standards

If the product does not perform as described on this datasheet, we will offer a refund or replacement. For full details of the Abpromise, please visit <https://www.abcam.co.jp/abpromise> or contact our technical team.

Terms and conditions

- Guarantee only valid for products bought direct from Abcam or one of our authorized distributors