


Anti-ALDH1A3 antibody ab129815

★★★★★ **7 Abreviews** **30 References** 画像数 4

製品の概要

製品名	Anti-ALDH1A3 antibody
製品の詳細	Rabbit polyclonal to ALDH1A3
由来種	Rabbit
特異性	Replenishment batches of ab129815 are tested in WB. Previous batches were additionally validated in ICC/IF, IHC-P and IP. These applications are still expected to work and are covered by our Abpromise guarantee.
アプリケーション	適用あり: WB, IP, ICC/IF, IHC-P
種交差性	交差種: Mouse, Rat, Human 交差が予測される動物種: Rabbit, Horse, Cow, Dog, Chimpanzee, Macaque monkey, Gorilla, African green monkey, Chinese hamster, Syrian hamster, Orangutan 
免疫原	Synthetic peptide corresponding to Human ALDH1A3 aa 100-200 conjugated to keyhole limpet haemocyanin. (Peptide available as ab154771)
ポジティブ・コントロール	This antibody gave a positive signal in Human, Mouse and Rat Kidney tissue lysates. IHC-P: human stomach tissue sections. ICC/IF: PC3
特記事項	<p>The Life Science industry has been in the grips of a reproducibility crisis for a number of years. Abcam is leading the way in addressing this with our range of recombinant monoclonal antibodies and knockout edited cell lines for gold-standard validation. Please check that this product meets your needs before purchasing.</p> <p>If you have any questions, special requirements or concerns, please send us an inquiry and/or contact our Support team ahead of purchase. Recommended alternatives for this product can be found below, along with publications, customer reviews and Q&As</p>

製品の特性

製品の状態	Liquid
保存方法	Shipped at 4°C. Store at +4°C short term (1-2 weeks). Upon delivery aliquot. Store at -20°C or -80°C. Avoid freeze / thaw cycle.
バッファー	pH: 7.40 Preservative: 0.02% Sodium azide Constituent: PBS

Batches of this product that have a concentration < 1mg/ml may have BSA added as a stabilising agent. If you would like information about the formulation of a specific lot, please contact our scientific support team who will be happy to help.

精製度

Immunogen affinity purified

ポリ/モノ

ポリクローナル

アイソタイプ

IgG

アプリケーション

The Abpromise guarantee

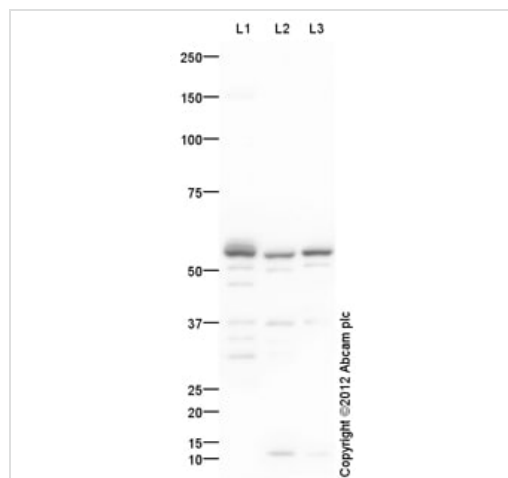
Abpromise保証は、次のテスト済みアプリケーションにおけるab129815の使用に適用されます

アプリケーションノートには、推奨の開始希釈率がありますが、適切な希釈率につきましてはご検討ください。

アプリケーション	Abreviews	特記事項
WB	★★★★★ (7)	Use a concentration of 1 µg/ml. Detects a band of approximately 56 kDa (predicted molecular weight: 56 kDa).
IP		Use a concentration of 5 µg/ml.
ICC/IF		Use a concentration of 1 - 5 µg/ml.
IHC-P		Use a concentration of 5 µg/ml. Perform heat mediated antigen retrieval with citrate buffer pH 6 before commencing with IHC staining protocol.

ターゲット情報

画像



Western blot - Anti-ALDH1A3 antibody (ab129815)

All lanes : Anti-ALDH1A3 antibody (ab129815) at 1 µg/ml

Lane 1 : Human kidney tissue lysate - total protein (**ab30203**)

Lane 2 : Kidney (Mouse) Tissue Lysate

Lane 3 : Kidney (Rat) Tissue Lysate

Lysates/proteins at 10 µg per lane.

Secondary

All lanes : Goat Anti-Rabbit IgG H&L (HRP) (**ab97051**) at 1/10000 dilution

Developed using the ECL technique.

Performed under reducing conditions.

Predicted band size: 56 kDa

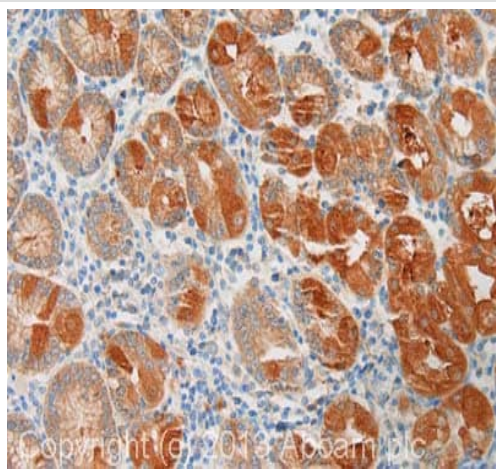
Observed band size: 56 kDa

Additional bands at: 12 kDa, 32 kDa, 37 kDa, 47 kDa, 50 kDa.

We are unsure as to the identity of these extra bands.

Exposure time: 1 minute

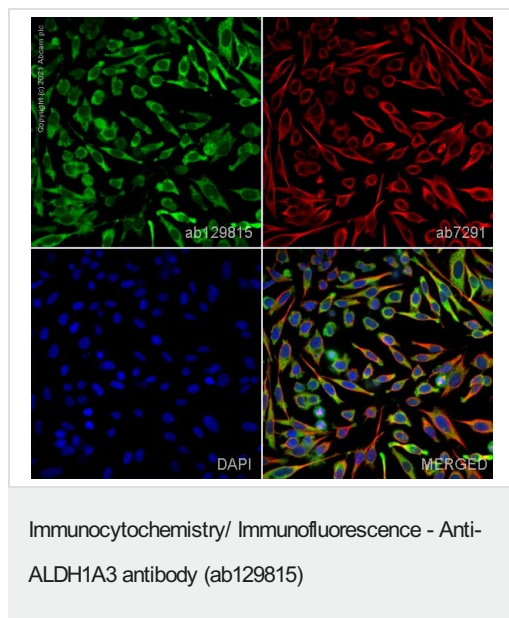
This blot was produced using a 10% Bis-tris gel under the MOPS buffer system. The gel was run at 200V for 50 minutes before being transferred onto a Nitrocellulose membrane at 30V for 70 minutes. The membrane was then blocked for an hour using 5% Bovine Serum Albumin before being incubated with ab129815 overnight at 4°C. Antibody binding was detected using an anti-rabbit antibody conjugated to HRP, and visualised using ECL development solution.



Immunohistochemistry (Formalin/PFA-fixed paraffin-embedded sections) - Anti-ALDH1A3 antibody (ab129815)

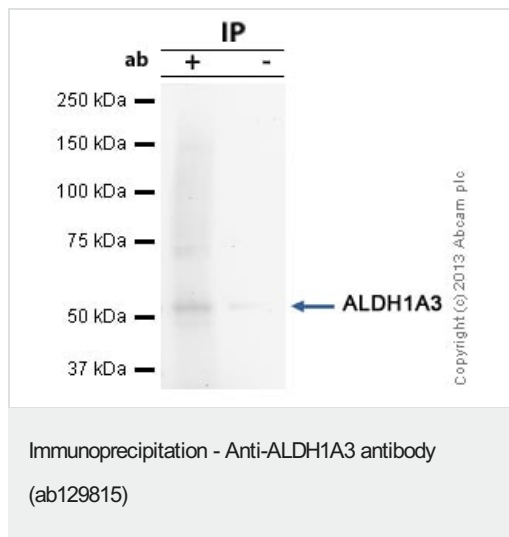
IHC image of ab129815 staining in human stomach formalin fixed paraffin embedded tissue section, performed on a Leica Bond™ system using the standard protocol F. The section was pre-treated using heat mediated antigen retrieval with sodium citrate buffer (pH6, epitope retrieval solution 1) for 20 mins. The section was then incubated with ab129815, 5µg/ml, for 15 mins at room temperature and detected using an HRP conjugated compact polymer system. DAB was used as the chromogen. The section was then counterstained with haematoxylin and mounted with DPX.

For other IHC staining systems (automated and non-automated) customers should optimize variable parameters such as antigen retrieval conditions, primary antibody concentration and antibody incubation times.



ab129815 staining ALDH1A3 in PC3 cells. The cells were fixed with 100% methanol (5 min), permeabilized with 0.1% PBS-Triton X-100 for 5 minutes and then blocked with 1% BSA/10% normal goat serum/0.3M glycine in 0.1% PBS-Tween for 1h. The cells were then incubated overnight at 4°C with ab129815 at 5µg/ml and **ab7291**, Mouse monoclonal [DM1A] to alpha Tubulin - Loading Control. Cells were then incubated with **ab150081**, Goat polyclonal Secondary Antibody to Rabbit IgG - H&L (Alexa Fluor® 488), pre-adsorbed at 1/1000 dilution (shown in green) and **ab150120**, Goat polyclonal Secondary Antibody to Mouse IgG - H&L (Alexa Fluor® 594), pre-adsorbed at 1/1000 dilution (shown in pseudocolour red). Nuclear DNA was labelled with DAPI (shown in blue).

Image was acquired with a high-content analyser (Operetta CLS, Perkin Elmer) and a maximum intensity projection of confocal sections is shown.



ALDH1A3 was immunoprecipitated using 0.5mg Mouse Kidney tissue lysate, 5µg of Rabbit polyclonal to ALDH1A3 and 50µl of protein G magnetic beads (+). No antibody was added to the control (-).

The antibody was incubated under agitation with Protein G beads for 10min, Mouse Kidney tissue lysate lysate diluted in RIPA buffer was added to each sample and incubated for a further 10min under agitation.

Proteins were eluted by addition of 40µl SDS loading buffer and incubated for 10min at 70°C; 10µl of each sample was separated on a SDS PAGE gel, transferred to a nitrocellulose membrane, blocked with 5% BSA and probed with ab129815.

Secondary: Mouse monoclonal [SB62a] Secondary Antibody to Rabbit IgG light chain (HRP) (**ab99697**).

Band: 56kDa; ALDH1A3

Our Abpromise to you: Quality guaranteed and expert technical support

- Replacement or refund for products not performing as stated on the datasheet
- Valid for 12 months from date of delivery
- Response to your inquiry within 24 hours
- We provide support in Chinese, English, French, German, Japanese and Spanish
- Extensive multi-media technical resources to help you
- We investigate all quality concerns to ensure our products perform to the highest standards

If the product does not perform as described on this datasheet, we will offer a refund or replacement. For full details of the Abpromise, please visit <https://www.abcam.co.jp/abpromise> or contact our technical team.

Terms and conditions

- Guarantee only valid for products bought direct from Abcam or one of our authorized distributors