


Anti-ALDH1A2 antibody ab112539

面格粉 1

医薬用外毒物

製品の概要

製品名	Anti-ALDH1A2 antibody
製品の詳細	Rabbit polyclonal to ALDH1A2
由来種	Rabbit
アプリケーション	適用あり: WB
種交差性	交差種: Human 交差が予測される動物種: Mouse, Rat 
免疫原	Recombinant fragment, corresponding to amino acids 210-465 of Human ALDH1A2 (BC030589).
ポジティブ・コントロール	Human fetal testis, fetal liver and K562 cell line lysates.
特記事項	<p>The Life Science industry has been in the grips of a reproducibility crisis for a number of years. Abcam is leading the way in addressing this with our range of recombinant monoclonal antibodies and knockout edited cell lines for gold-standard validation. Please check that this product meets your needs before purchasing.</p> <p>If you have any questions, special requirements or concerns, please send us an inquiry and/or contact our Support team ahead of purchase. Recommended alternatives for this product can be found below, along with publications, customer reviews and Q&As</p>

製品の特性

製品の状態	Lyophilized:Reconstitute in 200ul Sterile Distilled Water.
保存方法	Shipped at 4°C. Upon delivery aliquot and store at -20°C. Avoid repeated freeze / thaw cycles.
バッファー	pH: 7.20 Preservative: 0.02% Sodium azide Constituents: 1% BSA, 98% PBS
精製度	Immunogen affinity purified
ポリ/モノ	ポリクローナル
アイソタイプ	IgG

アプリケーション

The Abpromise guarantee

Abpromise保証は、次のテスト済みアプリケーションにおけるab112539の使用に適用されます

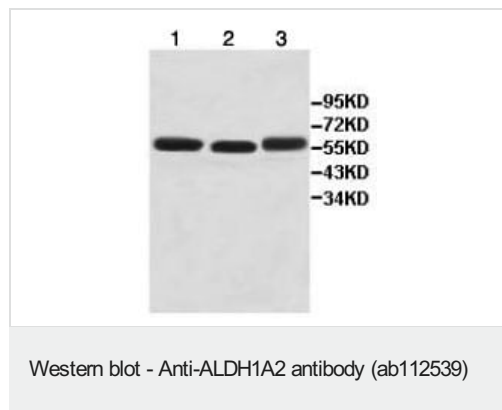
アプリケーションノートには、推奨の開始希釈率がありますが、適切な希釈率につきましてはご確認ください。

アプリケーション	Abreviews	特記事項
WB		1/1000 - 1/2000. Detects a band of approximately 57 kDa (predicted molecular weight: 57 kDa).

ターゲット情報

機能	Recognizes as substrates free retinal and cellular retinol-binding protein-bound retinal. Does not metabolize octanal and decanal but does not metabolize citral, benzaldehyde, acetaldehyde and propanal efficiently.
パスウェイ	Cofactor metabolism; retinol metabolism.
配列類似性	Belongs to the aldehyde dehydrogenase family.
細胞内局在	Cytoplasm.

画像



All lanes : Anti-ALDH1A2 antibody (ab112539) at 1/1000 dilution

Lane 1 : Human fetal testis lysate

Lane 2 : Human fetal liver lysate

Lane 3 : K562 cell lysate

Predicted band size: 57 kDa

Please note: All products are "FOR RESEARCH USE ONLY. NOT FOR USE IN DIAGNOSTIC PROCEDURES"

Our Abpromise to you: Quality guaranteed and expert technical support

- Replacement or refund for products not performing as stated on the datasheet
- Valid for 12 months from date of delivery
- Response to your inquiry within 24 hours
- We provide support in Chinese, English, French, German, Japanese and Spanish
- Extensive multi-media technical resources to help you
- We investigate all quality concerns to ensure our products perform to the highest standards

If the product does not perform as described on this datasheet, we will offer a refund or replacement. For full details of the Abpromise, please visit <https://www.abcam.co.jp/abpromise> or contact our technical team.

Terms and conditions

- Guarantee only valid for products bought direct from Abcam or one of our authorized distributors