


Anti-Aldehyde Oxidase antibody ab92519

画像数 2

製品の概要

製品名	Anti-Aldehyde Oxidase antibody
製品の詳細	Rabbit polyclonal to Aldehyde Oxidase
由来種	Rabbit
アプリケーション	適用あり: WB, IHC-P
種交差性	交差種: Human 交差が予測される動物種: Rat 
免疫原	Synthetic peptide corresponding to Human Aldehyde Oxidase aa 500-600 (internal sequence).
ポジティブ・コントロール	Human lung carcinoma tissue; HeLa cell extracts.
特記事項	<p>The Life Science industry has been in the grips of a reproducibility crisis for a number of years. Abcam is leading the way in addressing this with our range of recombinant monoclonal antibodies and knockout edited cell lines for gold-standard validation. Please check that this product meets your needs before purchasing.</p> <p>If you have any questions, special requirements or concerns, please send us an inquiry and/or contact our Support team ahead of purchase. Recommended alternatives for this product can be found below, along with publications, customer reviews and Q&As</p>

製品の特性

製品の状態	Liquid
保存方法	Shipped at 4°C. Upon delivery aliquot and store at -20°C. Avoid repeated freeze / thaw cycles.
バッファー	<p>pH: 7.40</p> <p>Preservative: 0.02% Sodium azide</p> <p>Constituents: PBS, 50% Glycerol (glycerin, glycerine), 0.87% Sodium chloride</p>
精製度	Without Mg ²⁺ and Ca ²⁺
特記事項 (精製)	Immunogen affinity purified
ポリ/モノ	ab92519 was affinity-purified from rabbit antiserum by affinity-chromatography using epitope-specific immunogen.
アイソタイプ	ポリクローナル
	IgG

アプリケーション

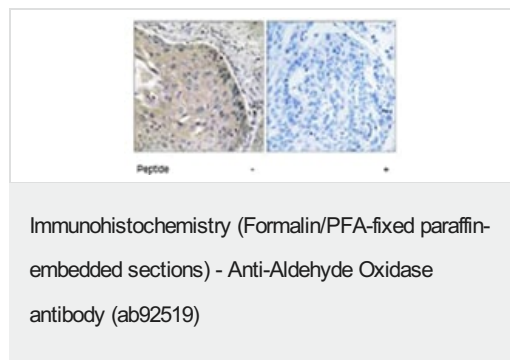
The Abpromise guarantee **Abpromise保証は、** 次のテスト済みアプリケーションにおけるab92519の使用に適用されます
アプリケーションノートには、推奨の開始希釈率がありますが、適切な希釈率につきましてはご検討ください。

アプリケーション	Abreviews	特記事項
WB		1/500 - 1/1000. Predicted molecular weight: 148 kDa.
IHC-P		1/50 - 1/100.

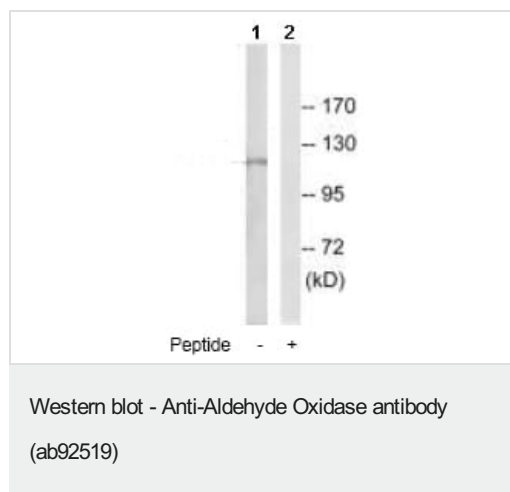
ターゲット情報

関連性	Aldehyde oxidase produces hydrogen peroxide and can catalyze the formation of superoxide under certain conditions. Aldehyde oxidase is a candidate gene for amyotrophic lateral sclerosis.
細胞内局在	Cytoplasmic

画像



ab92519 at 1/50 dilution staining Aldehyde Oxidase in Human lung carcinoma by Immunohistochemistry, Paraffin-embedded tissue, in the absence (left) or presence (right) of the immunising peptide.



All lanes : Anti-Aldehyde Oxidase antibody (ab92519) at 1/500 dilution

Lane 1 : HeLa cell extracts

Lane 2 : HeLa cell extracts with immunising peptide at 10 µg

Lysates/proteins at 30 µg per lane.

Predicted band size: 148 kDa

Please note: All products are "FOR RESEARCH USE ONLY. NOT FOR USE IN DIAGNOSTIC PROCEDURES"

Our Abpromise to you: Quality guaranteed and expert technical support

- Replacement or refund for products not performing as stated on the datasheet
- Valid for 12 months from date of delivery
- Response to your inquiry within 24 hours
- We provide support in Chinese, English, French, German, Japanese and Spanish
- Extensive multi-media technical resources to help you
- We investigate all quality concerns to ensure our products perform to the highest standards

If the product does not perform as described on this datasheet, we will offer a refund or replacement. For full details of the Abpromise, please visit <https://www.abcam.co.jp/abpromise> or contact our technical team.

Terms and conditions

- Guarantee only valid for products bought direct from Abcam or one of our authorized distributors