


Anti-AKT3 + AKT1 antibody [E45] ab32038

リコンビナント **RabMAb**

11 References **画像数 4**

製品の概要

製品名	Anti-AKT3 + AKT1 antibody [E45]
製品の詳細	Rabbit monoclonal [E45] to AKT3 + AKT1
由来種	Rabbit
特異性	This antibody detects Akt1 and Akt3.
アプリケーション	適用あり: IHC-P, WB, ICC/IF 適用なし: Flow Cyt
種交差性	交差種: Human 交差が予測される動物種: Mouse, Rat, Cow 
免疫原	Synthetic peptide corresponding to Human AKT1 aa 450-550. Database link: P31749
ポジティブ・コントロール	Squamous lung carcinoma ICC/IF: SK-BR-3 cells
特記事項	This product is a recombinant monoclonal antibody, which offers several advantages including: <ul style="list-style-type: none"> - High batch-to-batch consistency and reproducibility - Improved sensitivity and specificity - Long-term security of supply - Animal-free production For more information see here . Our RabMAb [®] technology is a patented hybridoma-based technology for making rabbit monoclonal antibodies. For details on our patents, please refer to RabMAb[®] patents .

製品の特性

製品の状態	Liquid
保存方法	Shipped at 4°C. Upon delivery aliquot and store at -20°C. Avoid freeze / thaw cycles.
バッファー	pH: 7.20 Preservative: 0.01% Sodium azide Constituents: 49% PBS, 50% Glycerol (glycerin, glycerine), 0.05% BSA
精製度	Protein A purified
ポリ/モノ	モノクローナル

クローン名 E45
アイソタイプ IgG

アプリケーション

The Abpromise guarantee Abpromise保証は、 次のテスト済みアプリケーションにおけるab32038の使用に適用されます
アプリケーションノートには、推奨の開始希釈率がありますが、適切な希釈率につきましてはご確認ください。

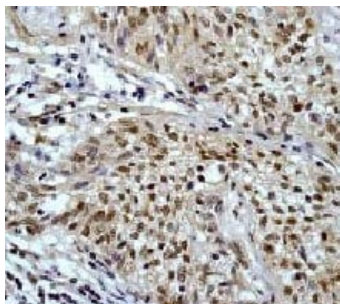
アプリケーション	Abreviews	特記事項
IHC-P		1/250 - 1/1000. Perform heat mediated antigen retrieval with citrate buffer pH 6 before commencing with IHC staining protocol.
WB		Use at an assay dependent concentration.
ICC/IF		1/500.

追加情報 Is unsuitable for Flow Cyt.

ターゲット情報

細胞内局在 AKT3: Cytoplasm. Membrane. Membrane-associated after cell stimulation leading to its translocation. AKT1: Cytoplasm. Nucleus. Cell membrane. Nucleus after activation by integrin-linked protein kinase 1 (ILK1). Nuclear translocation is enhanced by interaction with TCL1A. Phosphorylation on Tyr-176 by TNK2 results in its localization to the cell membrane where it is targeted for further phosphorylations on Thr-308 and Ser-473 leading to its activation and the activated form translocates to the nucleus.

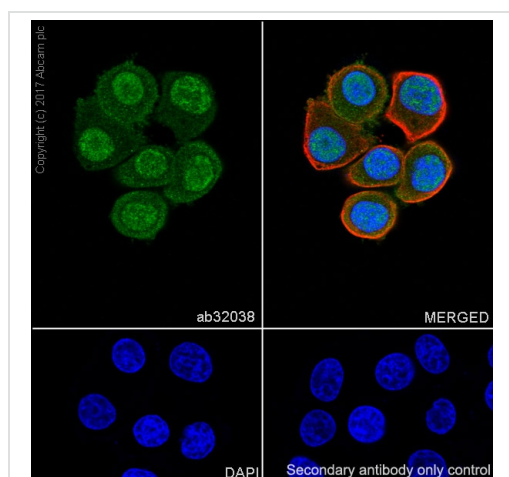
画像



Immunohistochemistry (Paraffin-embedded sections) analysis using ab32038 at a dilution of 1/1000 - 1/1250 and squamous lung carcinoma

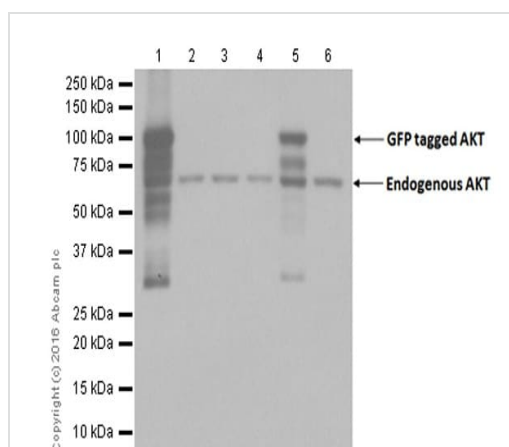
Perform heat mediated antigen retrieval with citrate buffer pH 6 before commencing with IHC staining protocol.

Immunohistochemistry (Formalin/PFA-fixed paraffin-embedded sections) - Anti-AKT3 + AKT1 antibody [E45] (ab32038)



Immunocytochemistry/ Immunofluorescence - Anti-AKT3 + AKT1 antibody [E45] (ab32038)

Immunocytochemistry/ Immunofluorescence analysis of SK-BR-3 (human breast adenocarcinoma epithelial cell) cells labeling AKT3+AKT1 with purified ab32038 at 1/500 dilution (2.1 µg/mL). Cells were fixed in 4% Paraformaldehyde and permeabilized with 0.1% tritonX-100. Cells were counterstained with **ab195889** Anti-alpha Tubulin antibody [DM1A] - Microtubule Marker (Alexa Fluor® 594) 1/200 (2.5 µg/mL). Goat anti rabbit IgG (Alexa Fluor® 488, **ab150077**) was used as the secondary antibody at 1/1000 (2 µg/mL) dilution. DAPI (blue) was used as nuclear counterstain. **ab195889** Anti-alpha Tubulin antibody [DM1A] - Microtubule Marker (Alexa Fluor® 594) 1/200 (2.5 µg/mL) was used as the secondary antibody only control.



Western blot - Anti-AKT3 + AKT1 antibody [E45] (ab32038)

All lanes : Anti-AKT3 + AKT1 antibody [E45] (ab32038) at 1/10000 dilution

Lane 1 : GFP tagged AKT1 transfected 293T cell lysate

Lanes 2 & 4 & 6 : Empty vector transfected 293T cell lysate

Lane 3 : GFP tagged AKT2 transfected 293T cell lysate

Lane 5 : GFP tagged AKT3 transfected 293T cell lysate

Lysates/proteins at 10 µg per lane.

Secondary

All lanes : Goat Anti-Rabbit IgG H&L (HRP) (**ab97051**) at 1/20000 dilution

Exposure time: 1 second

Blocking/Diluting buffer: 5% NFDm/TBST.

Observed band: 82kDa, 56kDa.

82kDa band represents GFP tagged AKT. 56kDa band represents endogenous AKT.

Why choose a recombinant antibody?



Research with confidence
Consistent and reproducible results



Long-term and scalable supply
Recombinant technology



Success from the first experiment
Confirmed specificity



Ethical standards compliant
Animal-free production

Anti-AKT3 + AKT1 antibody [E45] (ab32038)

Please note: All products are "FOR RESEARCH USE ONLY. NOT FOR USE IN DIAGNOSTIC PROCEDURES"

Our Abpromise to you: Quality guaranteed and expert technical support

- Replacement or refund for products not performing as stated on the datasheet
- Valid for 12 months from date of delivery
- Response to your inquiry within 24 hours
- We provide support in Chinese, English, French, German, Japanese and Spanish
- Extensive multi-media technical resources to help you
- We investigate all quality concerns to ensure our products perform to the highest standards

If the product does not perform as described on this datasheet, we will offer a refund or replacement. For full details of the Abpromise, please visit <https://www.abcam.co.jp/abpromise> or contact our technical team.

Terms and conditions

- Guarantee only valid for products bought direct from Abcam or one of our authorized distributors