

Anti-AKT1 + AKT2 + AKT3 (phospho Y312 + Y315 + Y316) antibody ab131443

52 References **画像数 3**

製品の概要

製品名	Anti-AKT1 + AKT2 + AKT3 (phospho Y312 + Y315 + Y316) antibody
製品の詳細	Rabbit polyclonal to AKT1 + AKT2 + AKT3 (phospho Y312 + Y315 + Y316)
由来種	Rabbit
特異性	ab131443 detects endogenous levels of AKT1/2/3 only when phosphorylated at tyrosine 315/316/312.
アプリケーション	適用あり: WB, IHC-P, ICC/IF
種交差性	交差種: Human
免疫原	Synthetic peptide corresponding to Human AKT1 + AKT2 + AKT3 conjugated to keyhole limpet haemocyanin. Run BLAST with Expasy Run BLAST with NCBI
ポジティブ・コントロール	HepG2 cell extract treated with EGF; HeLa cells; Human breast carcinoma tissue
特記事項	<p>The Life Science industry has been in the grips of a reproducibility crisis for a number of years. Abcam is leading the way in addressing this with our range of recombinant monoclonal antibodies and knockout edited cell lines for gold-standard validation. Please check that this product meets your needs before purchasing.</p> <p>If you have any questions, special requirements or concerns, please send us an inquiry and/or contact our Support team ahead of purchase. Recommended alternatives for this product can be found below, along with publications, customer reviews and Q&As</p>

製品の特性

製品の状態	Liquid
保存方法	Shipped at 4°C. Store at -20°C. Stable for 12 months at -20°C.
バッファー	pH: 7.40 Preservative: 0.02% Sodium azide Constituents: 49% PBS, 50% Glycerol (glycerin, glycerine), 0.88% Sodium chloride
	PBS without Mg ²⁺ and Ca ²⁺
精製度	Immunogen affinity purified

特記事項(精製)	ab131443 was purified by affinity-chromatography using epitope-specific phosphopeptide. Non-phospho specific antibodies were removed by chromatography using non-phosphopeptide.
ポリモノ	ポリクローナル
アイソタイプ	IgG

アプリケーション

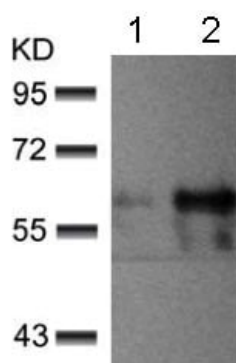
The Abpromise guarantee **Abpromise保証は、次のテスト済みアプリケーションにおけるab131443の使用に適用されます**
 アプリケーションノートには、推奨の開始希釈率がありますが、適切な希釈率につきましてはご検討ください。

アプリケーション	Abreviews	特記事項
WB		1/500 - 1/1000. Predicted molecular weight: 56 kDa.
IHC-P		1/50 - 1/100.
ICC/IF		1/100 - 1/200.

ターゲット情報

機能	IGF-1 leads to the activation of AKT3, which may play a role in regulating cell survival. Capable of phosphorylating several known proteins. Truncated isoform 2/PKB gamma 1 without the second serine phosphorylation site could still be stimulated but to a lesser extent.
組織特異性	In adult tissues, it is highly expressed in brain, lung and kidney, but weakly in heart, testis and liver. In fetal tissues, it is highly expressed in heart, liver and brain and not at all in kidney.
配列類似性	Belongs to the protein kinase superfamily. AGC Ser/Thr protein kinase family. RAC subfamily. Contains 1 AGC-kinase C-terminal domain. Contains 1 PH domain. Contains 1 protein kinase domain.
ドメイン	Binding of the PH domain to the phosphatidylinositol 3-kinase alpha (PI(3)K) results in its targeting to the plasma membrane.
翻訳後修飾	Phosphorylation on Thr-305 and Ser-472 is required for full activity (By similarity). Phosphorylated upon DNA damage, probably by ATM or ATR. Ubiquitinated. When fully phosphorylated and translocated into the nucleus, undergoes 'Lys-48'-polyubiquitination catalyzed by TTC3, leading to its degradation by the proteasome.
細胞内局在	Cytoplasm. Membrane. Membrane-associated after cell stimulation leading to its translocation.

画像



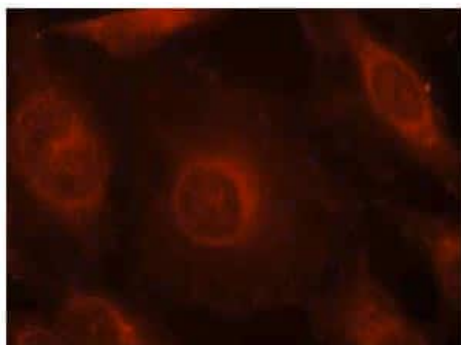
Western blot - Anti-AKT1 + AKT2 + AKT3 (phospho Y312 + Y315 + Y316) antibody (ab131443)

All lanes : Anti-AKT1 + AKT2 + AKT3 (phospho Y312 + Y315 + Y316) antibody (ab131443) at 1/500 dilution

Lane 1 : HepG2 cell extract untreated

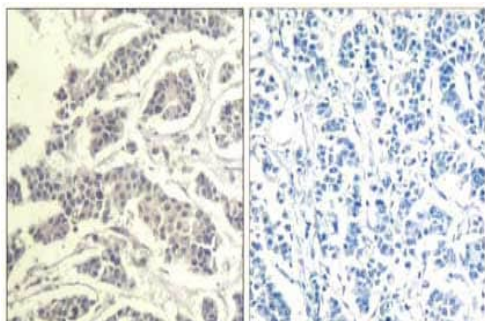
Lane 2 : HepG2 cell extract treated with EGF

Predicted band size: 56 kDa



Immunocytochemistry/ Immunofluorescence - Anti-AKT1 + AKT2 + AKT3 (phospho Y312 + Y315 + Y316) antibody (ab131443)

Immunofluorescent analysis of methanol-fixed HeLa cells labelling AKT1 + AKT2 + AKT3 (phospho Y315 + Y316 + Y312) with ab131443 at 1/100 dilution.



Immunohistochemistry (Formalin/PFA-fixed paraffin-embedded sections) - Anti-AKT1 + AKT2 + AKT3 (phospho Y312 + Y315 + Y316) antibody (ab131443)

Immunohistochemical analysis of paraffin-embedded Human breast carcinoma tissue labelling AKT1 + AKT2 + AKT3 (phospho Y315 + Y316 + Y312) with ab131443 at 1/50 dilution. Right panel was preincubated with blocking peptide.

Please note: All products are "FOR RESEARCH USE ONLY. NOT FOR USE IN DIAGNOSTIC PROCEDURES"

Our Abpromise to you: Quality guaranteed and expert technical support

- Replacement or refund for products not performing as stated on the datasheet
- Valid for 12 months from date of delivery
- Response to your inquiry within 24 hours

- We provide support in Chinese, English, French, German, Japanese and Spanish
- Extensive multi-media technical resources to help you
- We investigate all quality concerns to ensure our products perform to the highest standards

If the product does not perform as described on this datasheet, we will offer a refund or replacement. For full details of the Abpromise, please visit <https://www.abcam.co.jp/abpromise> or contact our technical team.

Terms and conditions

- Guarantee only valid for products bought direct from Abcam or one of our authorized distributors