

Anti-AKR1B10 antibody ab61832

画像数 1

製品の概要

製品名	Anti-AKR1B10 antibody
製品の詳細	Rabbit polyclonal to AKR1B10
由来種	Rabbit
アプリケーション	適用あり: WB
種交差性	交差種: Human
免疫原	Synthetic peptide corresponding to Human AKR1B10 aa 50-150 conjugated to keyhole limpet haemocyanin. (Peptide available as ab97989)
ポジティブ・コントロール	Recombinant Human AKR1B10 protein (ab85415) can be used as a positive control in WB. This antibody gave a positive signal in A549 whole cell lysate and Human small intestine tissue lysate.
特記事項	<p>The Life Science industry has been in the grips of a reproducibility crisis for a number of years. Abcam is leading the way in addressing this with our range of recombinant monoclonal antibodies and knockout edited cell lines for gold-standard validation. Please check that this product meets your needs before purchasing.</p> <p>If you have any questions, special requirements or concerns, please send us an inquiry and/or contact our Support team ahead of purchase. Recommended alternatives for this product can be found below, along with publications, customer reviews and Q&As</p>

製品の特性

製品の状態	Liquid
保存方法	Shipped at 4°C. Store at +4°C short term (1-2 weeks). Upon delivery aliquot. Store at -20°C or -80°C. Avoid freeze / thaw cycle.
バッファー	<p>pH: 7.40</p> <p>Preservative: 0.02% Sodium azide</p> <p>Constituent: PBS</p> <p>Batches of this product that have a concentration < 1mg/ml may have BSA added as a stabilising agent. If you would like information about the formulation of a specific lot, please contact our scientific support team who will be happy to help.</p>
精製度	Immunogen affinity purified

ポリ/モノ
アイソタイプ

ポリクローナル
IgG

アプリケーション

The Abpromise guarantee **Abpromise保証は、** 次のテスト済みアプリケーションにおけるab61832の使用に適用されます
アプリケーションノートには、推奨の開始希釈率がありますが、適切な希釈率につきましてはご確認ください。

アプリケーション	Abreviews	特記事項
WB		Use a concentration of 1 µg/ml. Detects a band of approximately 36 kDa (predicted molecular weight: 36 kDa).

ターゲット情報

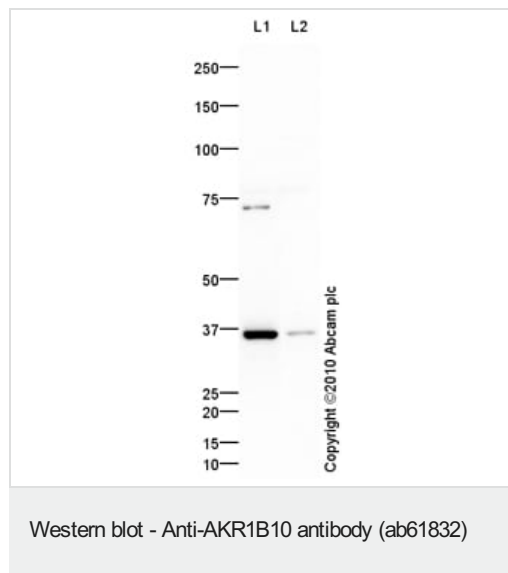
機能 Acts as all-trans-retinaldehyde reductase. Can efficiently reduce aliphatic and aromatic aldehydes, and is less active on hexoses (in vitro). May be responsible for detoxification of reactive aldehydes in the digested food before the nutrients are passed on to other organs.

組織特異性 Found in many tissues. Highly expressed in small intestine, colon and adrenal gland.

配列類似性 Belongs to the aldo/keto reductase family.

細胞内局在 Lysosome. Secreted. Secreted through a lysosome-mediated non-classical pathway.

画像



All lanes : Anti-AKR1B10 antibody (ab61832) at 1 µg/ml

Lane 1 : A549 (Human lung adenocarcinoma epithelial cell line)

Whole Cell Lysate

Lane 2 : Human small intestine tissue lysate - total protein

([ab29276](#))

Lysates/proteins at 10 µg per lane.

Secondary

All lanes : Goat polyclonal to Rabbit IgG - H&L - Pre-Adsorbed (HRP) at 1/3000 dilution

Developed using the ECL technique.

Performed under reducing conditions.

Predicted band size: 36 kDa

Observed band size: 36 kDa

Additional bands at: 73 kDa. We are unsure as to the identity of these extra bands.

Exposure time: 10 minutes

Please note: All products are "FOR RESEARCH USE ONLY. NOT FOR USE IN DIAGNOSTIC PROCEDURES"

Our Abpromise to you: Quality guaranteed and expert technical support

- Replacement or refund for products not performing as stated on the datasheet
- Valid for 12 months from date of delivery
- Response to your inquiry within 24 hours
- We provide support in Chinese, English, French, German, Japanese and Spanish
- Extensive multi-media technical resources to help you
- We investigate all quality concerns to ensure our products perform to the highest standards

If the product does not perform as described on this datasheet, we will offer a refund or replacement. For full details of the Abpromise, please visit <https://www.abcam.co.jp/abpromise> or contact our technical team.

Terms and conditions

- Guarantee only valid for products bought direct from Abcam or one of our authorized distributors