

Anti-AKAP12 antibody - C-terminal ab198895

2 References [画像数 2](#)

製品の概要

製品名	Anti-AKAP12 antibody - C-terminal
製品の詳細	Rabbit polyclonal to AKAP12 - C-terminal
由来種	Rabbit
アプリケーション	適用あり: IHC-P, WB
種交差性	交差種: Human
免疫原	Synthetic peptide corresponding to Human AKAP12 (C terminal). Gene Accession: NP_005091. Database link: Q02952
ポジティブ・コントロール	HT29 cell lysate and Human brain tissue.
特記事項	<p>The Life Science industry has been in the grips of a reproducibility crisis for a number of years. Abcam is leading the way in addressing this with our range of recombinant monoclonal antibodies and knockout edited cell lines for gold-standard validation. Please check that this product meets your needs before purchasing.</p> <p>If you have any questions, special requirements or concerns, please send us an inquiry and/or contact our Support team ahead of purchase. Recommended alternatives for this product can be found below, along with publications, customer reviews and Q&As</p>

製品の特性

製品の状態	Liquid
保存方法	Shipped at 4°C. Store at +4°C short term (1-2 weeks). Upon delivery aliquot. Store at -20°C long term. Avoid freeze / thaw cycle.
バッファー	pH: 7.4 Preservative: 0.05% Sodium azide Constituents: 49% PBS, 50% Glycerol
精製度	Immunogen affinity purified
ポリ/モノ	ポリクローナル
アイソタイプ	IgG

アプリケーション

The Abpromise guarantee

Abpromise保証は、次のテスト済みアプリケーションにおけるab198895の使用に適用されます

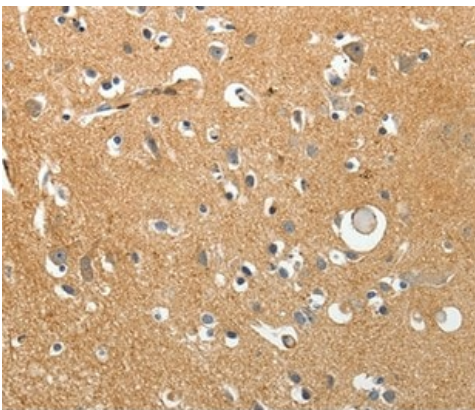
アプリケーションノートには、推奨の開始希釈率がありますが、適切な希釈率につきましてはご検討ください。

アプリケーション	Abreviews	特記事項
IHC-P		1/50 - 1/200.
WB		1/200 - 1/1000. Predicted molecular weight: 191 kDa.

ターゲット情報

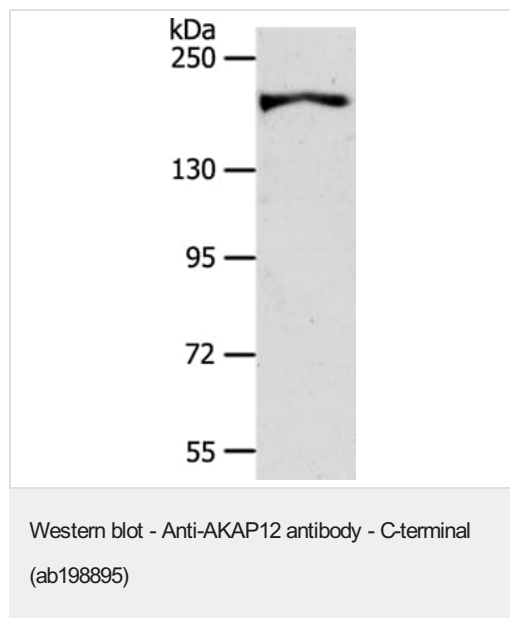
機能	Anchoring protein that mediates the subcellular compartmentation of protein kinase A (PKA) and protein kinase C (PKC).
組織特異性	Expressed in endothelial cells, cultured fibroblasts and osteosarcoma, but not in platelets, leukocytes, monocytic cell lines or peripheral blood cells.
配列類似性	Contains 3 AKAP domains.
ドメイン	Polybasic regions located between residues 266 and 557 are involved in binding PKC.
翻訳後修飾	Phosphorylated upon DNA damage, probably by ATM or ATR.
細胞内局在	Cytoplasm > cell cortex. Cytoplasm > cytoskeleton. May be part of the cortical cytoskeleton.

画像



Immunohistochemical analysis of paraffin-embedded Human brain tissue labeling AKAP12 with ab198895 at 1/40 dilution.

Immunohistochemistry (Formalin/PFA-fixed paraffin-embedded sections) - Anti-AKAP12 antibody - C-terminal (ab198895)



Anti-AKAP12 antibody - C-terminal (ab198895) at 1/600 dilution + HT29 cell lysate at 40 µg

Predicted band size: 191 kDa

Exposure time: 40 seconds

8% SDS-PAGE

Please note: All products are "FOR RESEARCH USE ONLY. NOT FOR USE IN DIAGNOSTIC PROCEDURES"

Our Abpromise to you: Quality guaranteed and expert technical support

- Replacement or refund for products not performing as stated on the datasheet
- Valid for 12 months from date of delivery
- Response to your inquiry within 24 hours
- We provide support in Chinese, English, French, German, Japanese and Spanish
- Extensive multi-media technical resources to help you
- We investigate all quality concerns to ensure our products perform to the highest standards

If the product does not perform as described on this datasheet, we will offer a refund or replacement. For full details of the Abpromise, please visit <https://www.abcam.co.jp/abpromise> or contact our technical team.

Terms and conditions

- Guarantee only valid for products bought direct from Abcam or one of our authorized distributors