

Anti-AHDC1 antibody ab122009

画像数 2

製品の概要

製品名	Anti-AHDC1 antibody
製品の詳細	Rabbit polyclonal to AHDC1
由来種	Rabbit
アプリケーション	適用あり: ICC/IF, IHC-P
種交差性	交差種: Human
免疫原	Recombinant Protein Epitope Signature Tag: SSLSSLEKLM MDWNEASSAP GYNWNQSVLF QSSSKPGRGR RKKVDLFEAS HLGFP TSASA AASGYPSKRS T, corresponding to amino acids 1196 - 1266 of Human AHDC1.

[Run BLAST with Expasy](#) [Run BLAST with NCBI](#)

ポジティブ・コントロール Human pancreas tissue

特記事項

The Life Science industry has been in the grips of a reproducibility crisis for a number of years. Abcam is leading the way in addressing this with our range of recombinant monoclonal antibodies and knockout edited cell lines for gold-standard validation. Please check that this product meets your needs before purchasing.

If you have any questions, special requirements or concerns, please send us an inquiry and/or contact our Support team ahead of purchase. Recommended alternatives for this product can be found below, along with publications, customer reviews and Q&As

製品の特性

製品の状態	Liquid
保存方法	Shipped at 4°C. Upon delivery aliquot and store at -20°C. Avoid freeze / thaw cycles.
バッファー	pH: 7.20 Preservative: 0.02% Sodium azide Constituents: 59% PBS, 40% Glycerol (glycerin, glycerine)
精製度	Immunogen affinity purified
ポリ/モノ	ポリクローナル
アイソタイプ	IgG

アプリケーション

The Abpromise guarantee

Abpromise保証は、次のテスト済みアプリケーションにおけるab122009の使用に適用されます

アプリケーションノートには、推奨の開始希釈率がありますが、適切な希釈率につきましてはご検討ください。

アプリケーション	Abreviews	特記事項
ICC/IF		Use a concentration of 0.25 - 2 µg/ml.
IHC-P		1/20 - 1/50. Perform heat mediated antigen retrieval with citrate buffer pH 6 before commencing with IHC staining protocol.

ターゲット情報

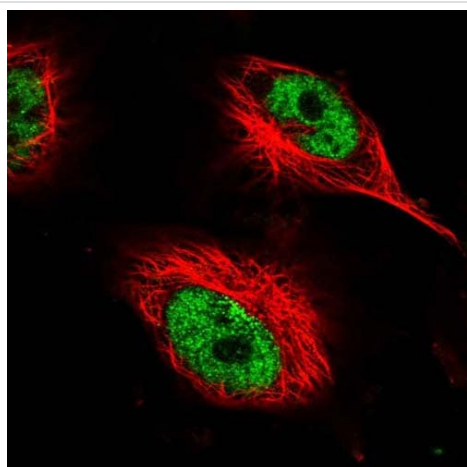
配列類似性

Contains 2 A.T hook DNA-binding domains.

翻訳後修飾

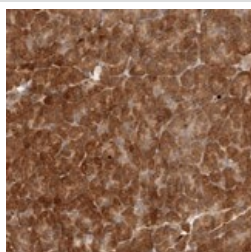
Phosphorylated upon DNA damage, probably by ATM or ATR.

画像



Immunocytochemistry/ Immunofluorescence - Anti-AHDC1 antibody (ab122009)

Immunofluorescent staining of Human cell line U-251 MG shows positivity in nucleus but not nucleoli. Recommended concentration of ab122009 1-4 µg/ml. Cells treated with PFA/Triton X-100.



Immunohistochemistry (Formalin/PFA-fixed paraffin-embedded sections) - Anti-AHDC1 antibody (ab122009)

ab122009, at a 1/20 dilution, staining AHDC1 in paraffin-embedded Human pancreas tissue by Immunohistochemistry.

Our Abpromise to you: Quality guaranteed and expert technical support

- Replacement or refund for products not performing as stated on the datasheet
- Valid for 12 months from date of delivery
- Response to your inquiry within 24 hours

- We provide support in Chinese, English, French, German, Japanese and Spanish
- Extensive multi-media technical resources to help you
- We investigate all quality concerns to ensure our products perform to the highest standards

If the product does not perform as described on this datasheet, we will offer a refund or replacement. For full details of the Abpromise, please visit <https://www.abcam.co.jp/abpromise> or contact our technical team.

Terms and conditions

- Guarantee only valid for products bought direct from Abcam or one of our authorized distributors