

Anti-AGE antibody ab176173

★★★★★ [1 Abreviews](#) [2 References](#) [画像数 1](#)

製品の概要

製品名	Anti-AGE antibody
製品の詳細	Rabbit polyclonal to AGE
由来種	Rabbit
アプリケーション	適用あり: WB
種交差性	交差種: Species independent
免疫原	Full length native protein (purified) corresponding to AGE. Glycated ribonuclease (RNase) prepared by incubating RNase with glucose at 37C for several months.
ポジティブ・コントロール	Glycated ovalbumin, BSA and ribonuclease.
特記事項	<p>The Life Science industry has been in the grips of a reproducibility crisis for a number of years. Abcam is leading the way in addressing this with our range of recombinant monoclonal antibodies and knockout edited cell lines for gold-standard validation. Please check that this product meets your needs before purchasing.</p> <p>If you have any questions, special requirements or concerns, please send us an inquiry and/or contact our Support team ahead of purchase. Recommended alternatives for this product can be found below, along with publications, customer reviews and Q&As</p>

製品の特性

製品の状態	Liquid
保存方法	Shipped at 4°C. Store at +4°C short term (1-2 weeks). Upon delivery aliquot. Store at -20°C long term. Avoid freeze / thaw cycle.
バッファー	Preservative: 0.02% Sodium azide Constituents: 69% Tris glycine, 30% Glycerol pH 7.4 - 7.8 Stabilizing proteins (0.5%)
精製度	Immunogen affinity purified
ポリ/モノ	ポリクローナル
アイソタイプ	IgG

アプリケーション

The Abpromise guarantee Abpromise保証は、 次のテスト済みアプリケーションにおけるab176173の使用に適用されます
アプリケーションノートには、推奨の開始希釈率がありますが、適切な希釈率につきましてはご検討ください。

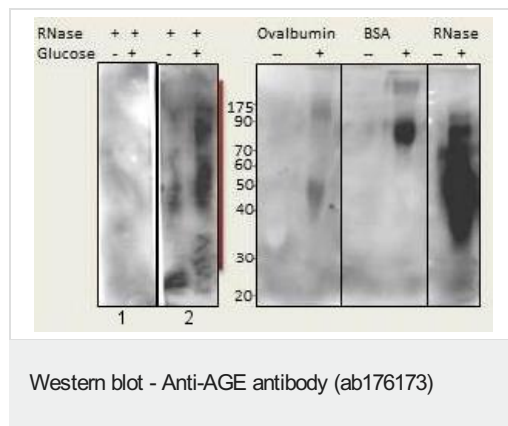
アプリケーション	Abreviews	特記事項
WB	★★★★☆ (1)	1/500.

ターゲット情報

関連性 The non enzymatic reaction of reducing carbohydrates with lysine side chains and N terminal amino groups of macromolecules (amino acids, proteins, phospholipids and nucleic acids) is called the Maillard reaction or glycation. The latter products of this process, termed advanced glycation end products (AGEs), adversely affect the functional properties of proteins, lipids and DNA. In long lived tissue proteins, these chemical modifications accumulate with age and may contribute to the pathophysiology of ageing and long term complications of diabetes, atherosclerosis and renal failure.

細胞内局在 Cell Membrane and Secreted

画像



Western Blot analysis of proteins (500 ng) incubated either with glucose or not. Left panel corresponds to incubations with unpurified antibody 1) PI and 2) Test bleed. Right panel shows incubation with ab176173 at a 1/500 dilution.

Please note: All products are "FOR RESEARCH USE ONLY. NOT FOR USE IN DIAGNOSTIC PROCEDURES"

Our Abpromise to you: Quality guaranteed and expert technical support

- Replacement or refund for products not performing as stated on the datasheet
- Valid for 12 months from date of delivery
- Response to your inquiry within 24 hours
- We provide support in Chinese, English, French, German, Japanese and Spanish
- Extensive multi-media technical resources to help you
- We investigate all quality concerns to ensure our products perform to the highest standards

If the product does not perform as described on this datasheet, we will offer a refund or replacement. For full details of the Abpromise,

please visit <https://www.abcam.co.jp/abpromise> or contact our technical team.

Terms and conditions

- Guarantee only valid for products bought direct from Abcam or one of our authorized distributors