





Anti-Aftiphilin antibody ab122239

画像数 2

製品の概要

製品名	Anti-Aftiphilin antibody
製品の詳細	Rabbit polyclonal to Aftiphilin
由来種	Rabbit
アプリケーション	適用あり: ICC/IF, IHC-P
種交差性	交差種: Human
免疫原	antigen sequence: RENNKINRVN ELNSVKEVAL GRSLDNKGDT DGEDQVCVSE ISVTNRGFS VEKQGLPTLQ QDEFLQSGVQ SK, corresponding to amino acids 262-333 of Human Aftiphilin. <div>  Run BLAST with   Run BLAST with  </div>
ポジティブ・コントロール	Human smooth muscle tissue; Human cell line U-2 OS
特記事項	<p>ab122239 is mono-specific.</p> <p>The Life Science industry has been in the grips of a reproducibility crisis for a number of years. Abcam is leading the way in addressing this with our range of recombinant monoclonal antibodies and knockout edited cell lines for gold-standard validation. Please check that this product meets your needs before purchasing.</p> <p>If you have any questions, special requirements or concerns, please send us an inquiry and/or contact our Support team ahead of purchase. Recommended alternatives for this product can be found below, along with publications, customer reviews and Q&As</p>

製品の特性

製品の状態	Liquid
保存方法	Shipped at 4°C. Upon delivery aliquot and store at -20°C. Avoid freeze / thaw cycles.
バッファー	pH: 7.2 Preservative: 0.02% Sodium azide Constituents: 59% PBS, 40% Glycerol (glycerin, glycerine)
精製度	Immunogen affinity purified
一次抗体 備考	ab122239 is mono-specific.
ポリ/モノ	ポリクローナル

アプリケーション

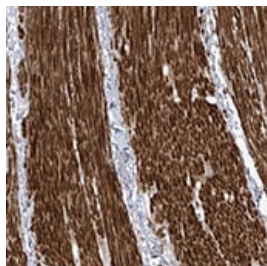
The Abpromise guarantee Abpromise保証は、 次のテスト済みアプリケーションにおけるab122239の使用に適用されます
アプリケーションノートには、推奨の開始希釈率がありますが、適切な希釈率につきましてはご確認ください。

アプリケーション	Abreviews	特記事項
ICC/IF		Use a concentration of 0.25 - 2 µg/ml.
IHC-P		1/500 - 1/1000. Perform heat mediated antigen retrieval with citrate buffer pH 6 before commencing with IHC staining protocol.

ターゲット情報

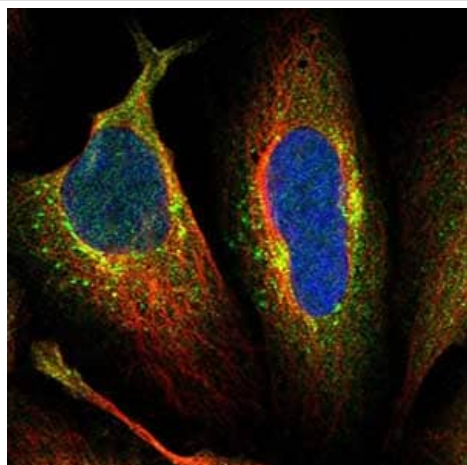
機能	May play a role in membrane trafficking.
ドメイン	The WXXF motifs mediate binding of accessory proteins to the ear-domain of AP-1, GGAs and AP-2 through hydrophobic interactions. Selective binding to the GAE domains of AP-1 or to the alpha-ear domain of AP-2 is tuned by the acidic context surrounding the motif and the properties of the second residue of the motif itself.
細胞内局在	Cytoplasm. Colocalizes with AP1G1 and clathrin.

画像



ab122239, at 1/500 dilution, staining Aftiphilin in paraffin-embedded Human smooth muscle by Immunohistochemistry.

Immunohistochemistry (Formalin/PFA-fixed paraffin-embedded sections) - Anti-Aftiphilin antibody (ab122239)



ab122239, at 4µg/ml, staining Aftiphilin in Human cell line U-2 OS by Immunofluorescence. Antibody staining is shown in green.

Immunocytochemistry/ Immunofluorescence - Anti-Aftiphilin antibody (ab122239)

Please note: All products are "FOR RESEARCH USE ONLY. NOT FOR USE IN DIAGNOSTIC PROCEDURES"

Our Abpromise to you: Quality guaranteed and expert technical support

- Replacement or refund for products not performing as stated on the datasheet
- Valid for 12 months from date of delivery
- Response to your inquiry within 24 hours
- We provide support in Chinese, English, French, German, Japanese and Spanish
- Extensive multi-media technical resources to help you
- We investigate all quality concerns to ensure our products perform to the highest standards

If the product does not perform as described on this datasheet, we will offer a refund or replacement. For full details of the Abpromise, please visit <https://www.abcam.co.jp/abpromise> or contact our technical team.

Terms and conditions

- Guarantee only valid for products bought direct from Abcam or one of our authorized distributors