

Anti-AFM antibody ab152141

画像表示

医薬用外劇物

製品の概要

製品名	Anti-AFM antibody
製品の詳細	Rabbit polyclonal to AFM
由来種	Rabbit
アプリケーション	適用あり: WB, IHC-P, ICC/IF
種交差性	交差種: Mouse, Human
免疫原	Recombinant fragment, corresponding to a region within amino acids 383-617 of Human AFM.
ポジティブ・コントロール	293T, A431, HeLa, HepG2, NIH 3T3, JC and BCL-1 whole cell lysates; Cal27 xenograft tissue; HeLa cells.
特記事項	<p>The Life Science industry has been in the grips of a reproducibility crisis for a number of years. Abcam is leading the way in addressing this with our range of recombinant monoclonal antibodies and knockout edited cell lines for gold-standard validation. Please check that this product meets your needs before purchasing.</p> <p>If you have any questions, special requirements or concerns, please send us an inquiry and/or contact our Support team ahead of purchase. Recommended alternatives for this product can be found below, along with publications, customer reviews and Q&As</p>

製品の特性

製品の状態	Liquid
保存方法	Shipped at 4°C. Upon delivery aliquot. Store at -20°C or -80°C. Avoid freeze / thaw cycle.
バッファー	pH: 7.00 Preservative: 0.01% Thimerosal (merthiolate) Constituents: 79.99% PBS, 20% Glycerol (glycerin, glycerine)
精製度	Immunogen affinity purified
ポリ/モノ	ポリクローナル
アイソタイプ	IgG

アプリケーション

The Abpromise guarantee

Abpromise保証は、次のテスト済みアプリケーションにおけるab152141の使用に適用されます

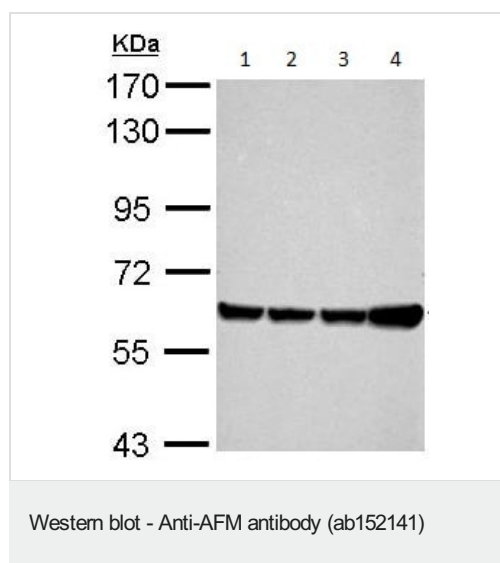
アプリケーションノートには、推奨の開始希釈率がありますが、適切な希釈率につきましてはご確認ください。

アプリケーション	Abreviews	特記事項
WB		1/1000 - 1/10000. Predicted molecular weight: 69 kDa.
IHC-P		1/100 - 1/1000.
ICC/IF		1/100 - 1/1000.

ターゲット情報

機能	Vitamin E binding protein. May transport vitamin E in body fluids under conditions where the lipoprotein system is not sufficient or across the blood-brain barrier.
配列類似性	Belongs to the ALB/AFP/VDB family. Contains 3 albumin domains.
翻訳後修飾	N-glycosylated.
細胞内局在	Secreted.

画像



All lanes : Anti-AFM antibody (ab152141) at 1/5000 dilution

Lane 1 : 293T whole cell lysate

Lane 2 : A431 whole cell lysate

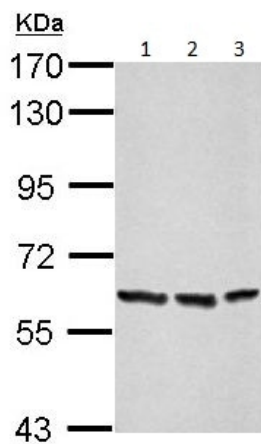
Lane 3 : HeLa whole cell lysate

Lane 4 : HepG2 whole cell lysate

Lysates/proteins at 30 µg per lane.

Predicted band size: 69 kDa

7.5% SDS PAGE



Western blot - Anti-AFM antibody (ab152141)

All lanes : Anti-AFM antibody (ab152141) at 1/5000 dilution

Lane 1 : NIH 3T3 whole cell lysate

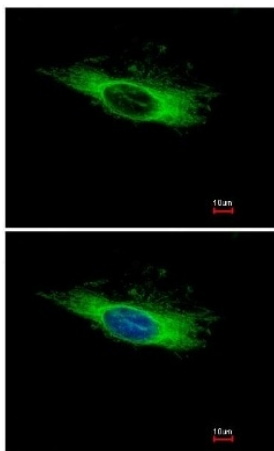
Lane 2 : JC whole cell lysate

Lane 3 : BCL-1 whole cell lysate

Lysates/proteins at 30 µg per lane.

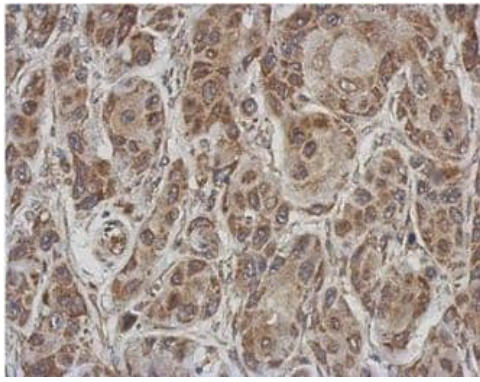
Predicted band size: 69 kDa

7.5% SDS PAGE



Immunocytochemistry/ Immunofluorescence - Anti-AFM antibody (ab152141)

Immunofluorescent analysis of methanol-fixed HeLa cells labeling AFM with ab152141 at 1/500 dilution. Lower image co-stained with Hoerchst 33342.



Immunohistochemical analysis of paraffin-embedded Cal27 (human) xenograft labeling AFM with ab152141 at 1/500 dilution.

Immunohistochemistry (Formalin/PFA-fixed paraffin-embedded sections) - Anti-AFM antibody (ab152141)

Please note: All products are "FOR RESEARCH USE ONLY. NOT FOR USE IN DIAGNOSTIC PROCEDURES"

Our Abpromise to you: Quality guaranteed and expert technical support

- Replacement or refund for products not performing as stated on the datasheet
- Valid for 12 months from date of delivery
- Response to your inquiry within 24 hours
- We provide support in Chinese, English, French, German, Japanese and Spanish
- Extensive multi-media technical resources to help you
- We investigate all quality concerns to ensure our products perform to the highest standards

If the product does not perform as described on this datasheet, we will offer a refund or replacement. For full details of the Abpromise, please visit <https://www.abcam.co.jp/abpromise> or contact our technical team.

Terms and conditions

- Guarantee only valid for products bought direct from Abcam or one of our authorized distributors