


Anti-AFM antibody ab106931

画像数 1

製品の概要

製品名	Anti-AFM antibody
製品の詳細	Goat polyclonal to AFM
由来種	Goat
アプリケーション	適用あり: WB
種交差性	交差種: Human 交差が予測される動物種: Mouse, Rat, Cow, Dog 
免疫原	Synthetic peptide: C-NKDDRPKDLSLRE , corresponding to internal sequence amino acids 318-330 of Human AFM (NP_001124.1) Run BLAST with Run BLAST with
ポジティブ・コントロール	Human Brain (Cerebellum and Cerebral Cortex) lysates.
特記事項	<p>The Life Science industry has been in the grips of a reproducibility crisis for a number of years. Abcam is leading the way in addressing this with our range of recombinant monoclonal antibodies and knockout edited cell lines for gold-standard validation. Please check that this product meets your needs before purchasing.</p> <p>If you have any questions, special requirements or concerns, please send us an inquiry and/or contact our Support team ahead of purchase. Recommended alternatives for this product can be found below, along with publications, customer reviews and Q&As</p>

製品の特性

製品の状態	Liquid
保存方法	Shipped at 4°C. Upon delivery aliquot and store at -20°C. Avoid freeze / thaw cycles.
バッファー	pH: 7.30 Preservative: 0.02% Sodium azide Constituents: Tris buffered saline, 0.5% BSA
精製度	Immunogen affinity purified
特記事項 (精製)	ab106931 is purified from goat serum by ammonium sulphate precipitation followed by antigen affinity chromatography using the immunizing peptide.
ポリ/モノ	ポリクローナル

アプリケーション

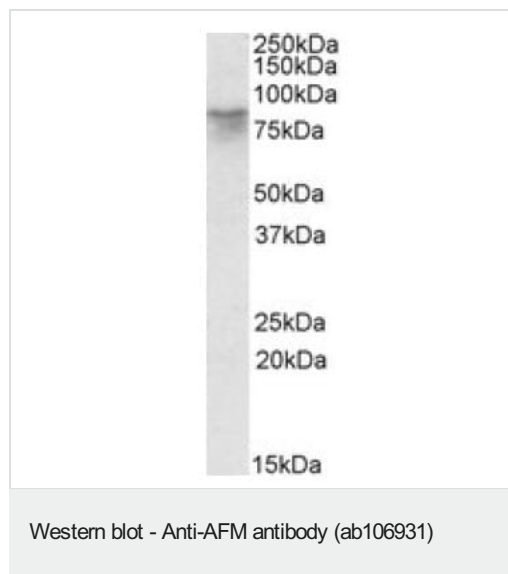
The Abpromise guarantee **Abpromise保証は、次のテスト済みアプリケーションにおけるab106931の使用に適用されます**
 アプリケーションノートには、推奨の開始希釈率がありますが、適切な希釈率につきましてはご検討ください。

アプリケーション	Abreviews	特記事項
WB		Use a concentration of 0.3 - 1 µg/ml. Predicted molecular weight: 69 kDa. 1 hour primary incubation is recommended for this product.

ターゲット情報

機能	Vitamin E binding protein. May transport vitamin E in body fluids under conditions where the lipoprotein system is not sufficient or across the blood-brain barrier.
配列類似性	Belongs to the ALB/AFP/VDB family. Contains 3 albumin domains.
翻訳後修飾	N-glycosylated.
細胞内局在	Secreted.

画像



Anti-AFM antibody (ab106931) at 0.3 µg/ml + Human Cerebellum lysate (in RIPA buffer) at 35 µg

Developed using the ECL technique.

Predicted band size: 69 kDa

Observed band size: 80 kDa

Please note: All products are "FOR RESEARCH USE ONLY. NOT FOR USE IN DIAGNOSTIC PROCEDURES"

Our Abpromise to you: Quality guaranteed and expert technical support

- Replacement or refund for products not performing as stated on the datasheet

- Valid for 12 months from date of delivery
- Response to your inquiry within 24 hours

- We provide support in Chinese, English, French, German, Japanese and Spanish
- Extensive multi-media technical resources to help you
- We investigate all quality concerns to ensure our products perform to the highest standards

If the product does not perform as described on this datasheet, we will offer a refund or replacement. For full details of the Abpromise, please visit <https://www.abcam.co.jp/abpromise> or contact our technical team.

Terms and conditions

- Guarantee only valid for products bought direct from Abcam or one of our authorized distributors