

# Anti-AFAP1L2 antibody ab106433

3 References [画像数 1](#)

### 製品の概要

製品名	Anti-AFAP1L2 antibody
製品の詳細	Rabbit polyclonal to AFAP1L2
由来種	Rabbit
アプリケーション	<b>適用あり:</b> WB
種交差性	<b>交差種:</b> Mouse
免疫原	A 15 amino acid synthetic peptide near the C terminus of Human AFAP1L2 (NP_001001936).
ポジティブ・コントロール	WB: Mouse liver tissue lysate
特記事項	<p>The Life Science industry has been in the grips of a reproducibility crisis for a number of years. Abcam is leading the way in addressing this with our range of recombinant monoclonal antibodies and knockout edited cell lines for gold-standard validation. Please check that this product meets your needs before purchasing.</p> <p>If you have any questions, special requirements or concerns, please send us an inquiry and/or contact our Support team ahead of purchase. Recommended alternatives for this product can be found below, along with publications, customer reviews and Q&amp;As</p>

### 製品の特性

製品の状態	Liquid
保存方法	Shipped at 4°C. Store at 4°C (stable for up to 12 months).
バッファー	pH: 7.2 Preservative: 0.02% Sodium azide Constituent: PBS
精製度	Immunogen affinity purified
ポリ/モノ	ポリクローナル
アイソタイプ	IgG

### アプリケーション

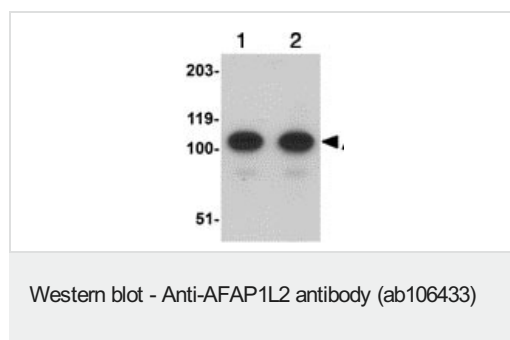
**The Abpromise guarantee**      **Abpromise保証は、**次のテスト済みアプリケーションにおけるab106433の使用に適用されます  
アプリケーションノートには、推奨の開始希釈率がありますが、適切な希釈率につきましてはご検討ください。

アプリケーション	Abreviews	特記事項
WB		Use a concentration of 1 - 2 µg/ml. Predicted molecular weight: 91 kDa.

## ターゲット情報

機能	May play a role in a signaling cascade by enhancing the kinase activity of SRC. Contributes to SRC-regulated transcription activation.
組織特異性	Detected in spleen and thyroid, and at lower levels in kidney, brain, lung and pancreas.
配列類似性	Contains 2 PH domains.
翻訳後修飾	Tyrosine phosphorylated (by SRC).
細胞内局在	Cytoplasm.

## 画像



**Lane 1 :** Anti-AFAP1L2 antibody (ab106433) at 1 µg/ml

**Lane 2 :** Anti-AFAP1L2 antibody (ab106433) at 2 µg/ml

**All lanes :** Mouse liver tissue lysate

Lysates/proteins at 15 µg per lane.

**Predicted band size:** 91 kDa

**Please note:** All products are "FOR RESEARCH USE ONLY. NOT FOR USE IN DIAGNOSTIC PROCEDURES"

## Our Abpromise to you: Quality guaranteed and expert technical support

- Replacement or refund for products not performing as stated on the datasheet
- Valid for 12 months from date of delivery
- Response to your inquiry within 24 hours
- We provide support in Chinese, English, French, German, Japanese and Spanish
- Extensive multi-media technical resources to help you
- We investigate all quality concerns to ensure our products perform to the highest standards

If the product does not perform as described on this datasheet, we will offer a refund or replacement. For full details of the Abpromise, please visit <https://www.abcam.co.jp/abpromise> or contact our technical team.

## Terms and conditions

- Guarantee only valid for products bought direct from Abcam or one of our authorized distributors