

Anti-AE2 antibody ab42687


★★★★☆ [2 Abreviews](#) [8 References](#) [画像数 1](#)

製品の概要

製品名 Anti-AE2 antibody
製品の詳細 Rabbit polyclonal to AE2

① This product is a **fast track antibody**. It has been affinity purified and shows high titre values against the immunizing peptide by ELISA.

[Read the terms of use »](#)

由来種 Rabbit
種交差性 **交差種:** Human
交差が予測される動物種: Mouse, Rat, Rabbit, Horse, Guinea pig, Cow, Orangutan 
免疫原 Synthetic peptide corresponding to Human AE2 aa 200-300.
(Peptide available as [ab42686](#))

特記事項
The Life Science industry has been in the grips of a reproducibility crisis for a number of years. Abcam is leading the way in addressing this with our range of recombinant monoclonal antibodies and knockout edited cell lines for gold-standard validation. Please check that this product meets your needs before purchasing.
If you have any questions, special requirements or concerns, please send us an inquiry and/or contact our Support team ahead of purchase. Recommended alternatives for this product can be found below, along with publications, customer reviews and Q&As

製品の特性

製品の状態 Liquid
保存方法 Shipped at 4°C. Store at +4°C short term (1-2 weeks). Upon delivery aliquot. Store at -20°C or -80°C. Avoid freeze / thaw cycle.
バッファー pH: 7.40
Preservative: 0.02% Sodium azide
Constituent: PBS

Batches of this product that have a concentration < 1mg/ml may have BSA added as a stabilising agent. If you would like information about the formulation of a specific lot, please contact our scientific support team who will be happy to help.

精製度	Immunogen affinity purified
ポリ/モノ	ポリクローナル
アイソタイプ	IgG

アプリケーション

Fast track antibodies constitute a diverse group of products that have been released to accelerate your research, but are not yet fully characterized. They have all been affinity purified and show high titre values against the immunizing peptide (by ELISA).

Fast track terms of use

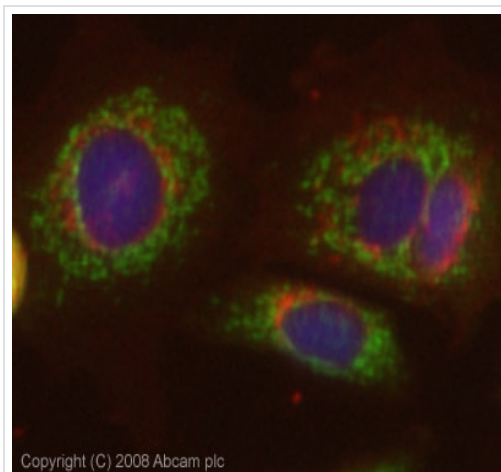
アプリケーション	Abreviews	特記事項
ICC/IF		Use at an assay dependent concentration.

ターゲット情報

機能	Plasma membrane anion exchange protein of wide distribution.
配列類似性	Belongs to the anion exchanger (TC 2.A.31) family.
細胞内局在	Membrane.

画像

This Fast-Track antibody is not yet fully characterised. These images represent **inconclusive preliminary data**.



Immunocytochemistry/ Immunofluorescence - Anti-AE2 antibody (ab42687)

ICC/IF image of ab42687 stained MCF7 cells. The cells were 100% methanol fixed (5 min), permabilised in 0.1% PBS-Tween (20 min) and incubated with the antibody (ab42687, 5µg/ml) for 1h at room temperature. 1%BSA / 10% normal goat serum / 0.3M glycine was used to block non-specific protein-protein interactions. The secondary antibody (green) was Alexa Fluor® 488 goat anti-rabbit IgG (H+L) used at a 1/1000 dilution for 1h. Alexa Fluor® 594 WGA was used to label plasma membranes (red). DAPI was used to stain the cell nuclei (blue). This antibody also gave a positive IF result in Hek293 cells fixed in 100% methanol at 5µg/ml. However, this Fast-Track antibody is not yet fully characterised. This image represents inconclusive preliminary data.

Please note: All products are "FOR RESEARCH USE ONLY. NOT FOR USE IN DIAGNOSTIC PROCEDURES"

Terms and conditions

- Guarantee only valid for products bought direct from Abcam or one of our authorized distributors