

Anti-ADRA1B antibody ab84405

★★★★★ 1 Abreviews 3 References 画像数 3

医薬用外毒物

製品の概要

製品名	Anti-ADRA1B antibody
製品の詳細	Rabbit polyclonal to ADRA1B
由来種	Rabbit
アプリケーション	適用あり: ICC/IF, WB, IHC-P
種交差性	交差種: Human
免疫原	Synthetic peptide corresponding to Human ADRA1B (C terminal). (NM_000679; P35368) (Peptide available as ab226906)
ポジティブ・コントロール	Human fetal brain lysates; human heart tissue.
特記事項	<p>The Life Science industry has been in the grips of a reproducibility crisis for a number of years. Abcam is leading the way in addressing this with our range of recombinant monoclonal antibodies and knockout edited cell lines for gold-standard validation. Please check that this product meets your needs before purchasing.</p> <p>If you have any questions, special requirements or concerns, please send us an inquiry and/or contact our Support team ahead of purchase. Recommended alternatives for this product can be found below, along with publications, customer reviews and Q&As</p>

製品の特性

製品の状態	Lyophilized:Reconstitute with 200ul distilled sterile water. Please note that if you receive this product in liquid form it has already been reconstituted as described and no further reconstitution is necessary.
保存方法	Shipped at 4°C. Upon delivery aliquot and store at -20°C. Avoid repeated freeze / thaw cycles.
バッファー	Preservative: 0.02% Sodium azide Constituent: 1% BSA
精製度	Immunogen affinity purified
特記事項(精製)	ab84405 is purified by a peptide affinity column.
ポリ/モノ	ポリクローナル
アイソタイプ	IgG

アプリケーション

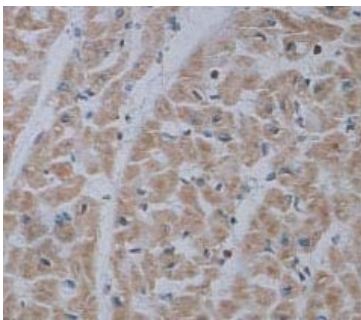
The Abpromise guarantee **Abpromise保証は、次のテスト済みアプリケーションにおけるab84405の使用に適用されます**
アプリケーションノートには、推奨の開始希釈率がありますが、適切な希釈率につきましてはご検討ください。

アプリケーション	Abreviews	特記事項
ICC/IF		Use a concentration of 1 µg/ml.
WB		1/200 - 1/1000. Predicted molecular weight: 57 kDa. Can be blocked with Human ADRA1B peptide (ab226906) .
IHC-P	★★★★★ (1)	1/100 - 1/500.

ターゲット情報

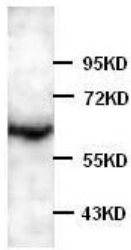
機能	This alpha-adrenergic receptor mediates its action by association with G proteins that activate a phosphatidylinositol-calcium second messenger system. Its effect is mediated by G(q) and G(11) proteins. Nuclear ADRA1A-ADRA1B heterooligomers regulate phenylephrine (PE)-stimulated ERK signaling in cardiac myocytes.
配列類似性	Belongs to the G-protein coupled receptor 1 family. Adrenergic receptor subfamily. ADRA1B sub-subfamily.
細胞内局在	Nucleus membrane. Cell membrane. Location at the nuclear membrane facilitates heterooligomerization and regulates ERK-mediated signaling in cardiac myocytes. signaling in cardiac myocytes. Colocalizes with GNAQ, PLCB1 as well as LAP2 at the nuclear membrane of cardiac myocytes.

画像



ab84405, at a 1/100 dilution, staining ADRA1B in formalin fixed, paraffin embedded human heart tissue by immunohistochemistry.

Immunohistochemistry (Formalin/PFA-fixed paraffin-embedded sections) - Anti-ADRA1B antibody (ab84405)

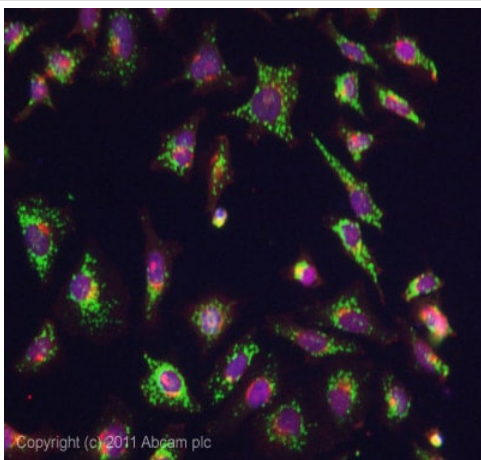


Western blot - Anti-ADRA1B antibody (ab84405)

Anti-ADRA1B antibody (ab84405) at 1/500 dilution + human fetal brain lysates

Predicted band size: 57 kDa

Observed band size: 57 kDa



Immunocytochemistry/ Immunofluorescence - Anti-ADRA1B antibody (ab84405)

ICC/IF image of **ab84450** stained HeLa cells. The cells were 4% formaldehyde fixed (10 min) and then incubated in 1%BSA / 10% normal goat serum / 0.3M glycine in 0.1% PBS-Tween for 1h to permeabilise the cells and block non-specific protein-protein interactions. The cells were then incubated with the antibody (**ab84450**, 1µg/ml) overnight at +4°C. The secondary antibody (green) was **ab96899**, DyLight® 488 goat anti-rabbit IgG (H+L) used at a 1/250 dilution for 1h. Alexa Fluor® 594 WGA was used to label plasma membranes (red) at a 1/200 dilution for 1h. DAPI was used to stain the cell nuclei (blue) at a concentration of 1.43µM.

Please note: All products are "FOR RESEARCH USE ONLY. NOT FOR USE IN DIAGNOSTIC PROCEDURES"

Our Abpromise to you: Quality guaranteed and expert technical support

- Replacement or refund for products not performing as stated on the datasheet
- Valid for 12 months from date of delivery
- Response to your inquiry within 24 hours
- We provide support in Chinese, English, French, German, Japanese and Spanish
- Extensive multi-media technical resources to help you
- We investigate all quality concerns to ensure our products perform to the highest standards

If the product does not perform as described on this datasheet, we will offer a refund or replacement. For full details of the Abpromise, please visit <https://www.abcam.co.jp/abpromise> or contact our technical team.

Terms and conditions

- Guarantee only valid for products bought direct from Abcam or one of our authorized distributors