

Anti-ADAM23 antibody ab28304

3 References [画像数 1](#)

製品の概要

製品名	Anti-ADAM23 antibody
製品の詳細	Rabbit polyclonal to ADAM23
由来種	Rabbit
特異性	ab28304 recognises the Propeptide domain of ADAM23.
アプリケーション	適用あり: ICC/IF
種交差性	交差種: Rat
免疫原	Synthetic peptide corresponding to the Propeptide of Human ADAM23. Immunogen の所有権に関して (Peptide available as ab41222 .)
特記事項	<p>The Life Science industry has been in the grips of a reproducibility crisis for a number of years. Abcam is leading the way in addressing this with our range of recombinant monoclonal antibodies and knockout edited cell lines for gold-standard validation. Please check that this product meets your needs before purchasing.</p> <p>If you have any questions, special requirements or concerns, please send us an inquiry and/or contact our Support team ahead of purchase. Recommended alternatives for this product can be found below, along with publications, customer reviews and Q&As</p>

製品の特性

製品の状態	Liquid
保存方法	Shipped at 4°C. Upon delivery aliquot and store at -20°C. Avoid freeze / thaw cycles.
バッファー	Preservative: 0.05% Sodium azide Constituent: 50% Glycerol
精製度	Immunogen affinity purified
ポリ/モノ	ポリクローナル
アイソタイプ	IgG

アプリケーション

The Abpromise guarantee **Abpromise保証は、次のテスト済みアプリケーションにおけるab28304の使用に適用されます**
 アプリケーションノートには、推奨の開始希釈率がありますが、適切な希釈率につきましてはご検討ください。

アプリケーション	Abreviews	特記事項
ICC/IF		

追加情報

ICC/IF: Use at a concentration of 1 µg/ml.

WB: 1/1000 when using colorimetric substrates such as BCIP/NBT - 1/5000 for chemiluminescent substrates. Predicted molecular weight: 92 kDa. EDTA/EGTA treatment of tissues or lysates is required to see latent zymogen. Dilution optimised using Chromogenic detection. Not yet tested in other applications. Optimal dilutions/concentrations should be determined by the end user.

ターゲット情報

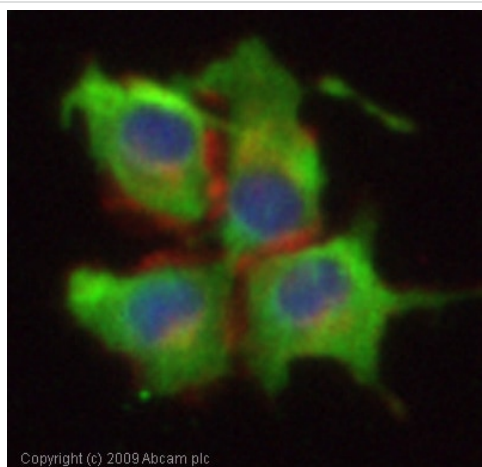
関連性

ADAM23 is a non-catalytic metalloprotease-like protein. It is highly expressed in the brain, primarily in the amygdala, caudate nucleus, hypothalamus, thalamus, cerebral cortex and occipital pole, and weakly expressed in the heart. 3 isoforms are produced by alternative splicing, alpha, beta and gamma. ADAM23 may play a role in cell-cell and cell-matrix interactions.

細胞内局在

Single pass type I membrane protein. 3 isoforms produced by alternative splicing, gamma isoform is secreted.

画像



ICC/IF image of ab28304 stained PC12 cells. The cells were 4% formaldehyde fixed (10 min) and then incubated in 1%BSA / 10% normal goat serum / 0.3M glycine in 0.1% PBS-Tween for 1h to permeabilise the cells and block non-specific protein-protein interactions. The cells were then incubated with the antibody (ab28304, 1µg/ml) overnight at +4°C. The secondary antibody (green) was Alexa Fluor® 488 goat anti-rabbit IgG (H+L) used at a 1/1000 dilution for 1h. Alexa Fluor® 594 WGA was used to label plasma membranes (red) at a 1/200 dilution for 1h. DAPI was used to stain the cell nuclei (blue) at a concentration of 1.43µM.

Immunocytochemistry/ Immunofluorescence - Anti-ADAM23 antibody (ab28304)

Please note: All products are "FOR RESEARCH USE ONLY. NOT FOR USE IN DIAGNOSTIC PROCEDURES"

Our Abpromise to you: Quality guaranteed and expert technical support

- Replacement or refund for products not performing as stated on the datasheet
- Valid for 12 months from date of delivery
- Response to your inquiry within 24 hours

- We provide support in Chinese, English, French, German, Japanese and Spanish
- Extensive multi-media technical resources to help you
- We investigate all quality concerns to ensure our products perform to the highest standards

If the product does not perform as described on this datasheet, we will offer a refund or replacement. For full details of the Abpromise, please visit <https://www.abcam.co.jp/abpromise> or contact our technical team.

Terms and conditions

- Guarantee only valid for products bought direct from Abcam or one of our authorized distributors