




# Anti-Activin Receptor Type IIB/ACVR2B antibody [1C11] ab76940

★★★★★ [3 Abreviews](#) [10 References](#) [画像数 4](#)

### 製品の概要

|              |   |
|--------------|---|
| 製品名          | Anti-Activin Receptor Type IIB/ACVR2B antibody [1C11]   |
| 製品の詳細        | Mouse monoclonal [1C11] to Activin Receptor Type IIB/ACVR2B   |
| 由来種          | Mouse   |
| アプリケーション     | <b>適用あり:</b> WB, ELISA, Flow Cyt  |
| 種交差性         | <b>交差種:</b> Human, Recombinant fragment<br><b>交差が予測される動物種:</b> Rat, Sheep, Horse, Chicken, Cow, Dog, Pig, Chimpanzee, Macaque monkey   |
| 免疫原          | Recombinant fragment corresponding to Human Activin Receptor Type IIB/ACVR2B aa 1-150.<br>Database link: <a href="#">Q13705</a> <div>  <a href="#">Run BLAST with</a>  <a href="#">Run BLAST with</a> </div>  |
| ポジティブ・コントロール | Lysate from 293T cells transfected with Activin Receptor Type IIB/ACVR2B  |
| 特記事項         | <p>This product was changed from ascites to tissue culture supernatant on 22/03/2019. Please note that the dilutions may need to be adjusted accordingly. If you have any questions, please do not hesitate to contact our scientific support team.</p> <p>The Life Science industry has been in the grips of a reproducibility crisis for a number of years. Abcam is leading the way in addressing this with our range of recombinant monoclonal antibodies and knockout edited cell lines for gold-standard validation. Please check that this product meets your needs before purchasing.</p> <p>If you have any questions, special requirements or concerns, please send us an inquiry and/or contact our Support team ahead of purchase. Recommended alternatives for this product can be found below, along with publications, customer reviews and Q&amp;As</p> |

### 製品の特性

|       |   |
|-------|---|
| 製品の状態 | Liquid  |
| 保存方法  | Shipped at 4°C. Upon delivery aliquot and store at -20°C or -80°C. Avoid repeated freeze / thaw cycles. |
| バッファー | pH: 7.40<br>Constituent: 100% PBS   |

|        |                            |
|--------|----------------------------|
| 精製度    | Tissue culture supernatant |
| ポリ/モノ  | モノクローナル                    |
| クローン名  | 1C11                       |
| アイソタイプ | IgG2a                      |
| 軽鎖の種類  | kappa                      |

## アプリケーション

**The Abpromise guarantee**      **Abpromise保証は、次のテスト済みアプリケーションにおけるab76940の使用に適用されます**

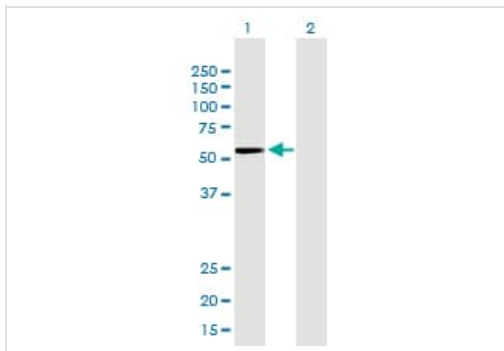
アプリケーションノートには、推奨の開始希釈率がありますが、適切な希釈率につきましてはご検討ください。

| アプリケーション | Abreviews | 特記事項  |
|----------|-----------|---|
| WB       | ★★★★★ (2) | Use at an assay dependent concentration. Predicted molecular weight: 58 kDa.  |
| ELISA    |           | Use at an assay dependent concentration.  |
| Flow Cyt |           | Use at an assay dependent concentration.<br><b>ab170191</b> - Mouse monoclonal IgG2a, is suitable for use as an isotype control with this antibody. |

## ターゲット情報

|       |   |
|-------|---|
| 機能    | On ligand binding, forms a receptor complex consisting of two type II and two type I transmembrane serine/threonine kinases. Type II receptors phosphorylate and activate type I receptors which autophosphorylate, then bind and activate SMAD transcriptional regulators. Receptor for activin A, activin B and inhibin A.  |
| 関連疾患  | Defects in ACVR2B are the cause of visceral heterotaxy autosomal type 4 (HTX4) [MIM:613751]. A form of visceral heterotaxy, a complex disorder due to disruption of the normal left-right asymmetry of the thoracoabdominal organs. It results in an abnormal arrangement of visceral organs, and a wide variety of congenital defects. Clinical features of visceral heterotaxy type 4 include dextrocardia, right aortic arch and a right-sided spleen, anomalies of the inferior and the superior vena cava, atrial ventricular canal defect with dextro-transposed great arteries, pulmonary stenosis, polysplenia and midline liver. |
| 配列類似性 | Belongs to the protein kinase superfamily. TKL Ser/Thr protein kinase family. TGFB receptor subfamily.<br>Contains 1 protein kinase domain.   |
| 細胞内局在 | Membrane.   |

## 画像



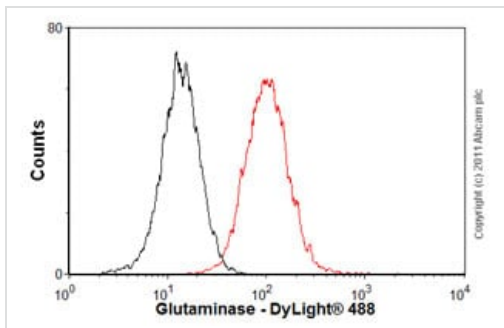
Western blot - Anti-Activin Receptor Type  
IIB/ACVR2B antibody [1C11] (ab76940)

**All lanes** : Anti-Activin Receptor Type IIB/ACVR2B antibody [1C11]  
(ab76940)

**Lane 1** : IIB/ACVR2B transfected 293T cell lysate

**Lane 2** : Non-transfected 293T cell lysate

**Predicted band size:** 58 kDa



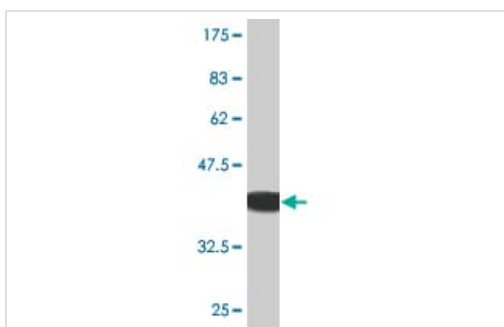
Flow Cytometry - Anti-Activin Receptor Type  
IIB/ACVR2B antibody [1C11] (ab76940)

Overlay histogram showing HeLa cells stained with ab76940 (red line). The cells were fixed with 80% methanol (5 min) and incubated in 1x PBS / 10% normal goat serum / 0.3M glycine to block non-specific protein-protein interactions. The cells were then incubated with the antibody (ab76940, 0.5µg/1x10<sup>6</sup> cells) for 30 min at 22°C. The secondary antibody used was DyLight® 488 goat anti-mouse IgG (H+L) ([ab96879](#)) at 1/500 dilution for 30 min at 22°C. Isotype control antibody (black line) was mouse IgG2a [ICIG2A] ([ab91361](#), 1µg/1x10<sup>6</sup> cells) used under the same conditions.

Acquisition of >5,000 events was performed.

Please note that Abcam do not have any data for use of this antibody on non-fixed cells. We welcome any customer feedback.

This image was generated using the ascites version of the product.



Western blot - Anti-Activin Receptor Type  
IIB/ACVR2B antibody [1C11] (ab76940)

Anti-Activin Receptor Type IIB/ACVR2B antibody [1C11] (ab76940) at 1/500 dilution + immunogen (GST-tagged 100aa recombinant fragment) at 0.2 µg

#### Secondary

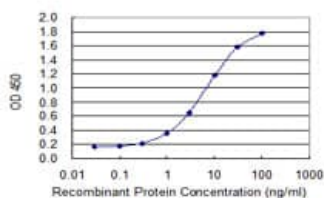
Goat anti-Mouse IgG (H&L) HRP-conjugated at 1/5000 dilution

**Predicted band size:** 58 kDa

**Observed band size:** 37 kDa

MW of GST tag alone: 26 kDa

This image was generated using the ascites version of the product.



Detection limit for recombinant GST tagged ACVR2B is 0.1 ng/ml as a capture antibody.

ELISA - Anti-Activin Receptor Type IIB/ACVR2B  
antibody [1C11] (ab76940)

**Please note:** All products are "FOR RESEARCH USE ONLY. NOT FOR USE IN DIAGNOSTIC PROCEDURES"

### Our Abpromise to you: Quality guaranteed and expert technical support

- Replacement or refund for products not performing as stated on the datasheet
- Valid for 12 months from date of delivery
- Response to your inquiry within 24 hours
- We provide support in Chinese, English, French, German, Japanese and Spanish
- Extensive multi-media technical resources to help you
- We investigate all quality concerns to ensure our products perform to the highest standards

If the product does not perform as described on this datasheet, we will offer a refund or replacement. For full details of the Abpromise, please visit <https://www.abcam.co.jp/abpromise> or contact our technical team.

### Terms and conditions

- Guarantee only valid for products bought direct from Abcam or one of our authorized distributors