




Anti-Actin antibody [5J11] ab190301

3 References **画像数 2**

製品の概要

製品名	Anti-Actin antibody [5J11]
製品の詳細	Mouse monoclonal [5J11] to Actin
由来種	Mouse
特異性	ab190301 binds to all six isoforms of mammalian actin.
アプリケーション	適用あり: ICC/IF, WB
種交差性	交差種: Mouse, Rat, Human 交差が予測される動物種: Rabbit, Orangutan 
免疫原	Full length native protein (purified) corresponding to Cow Actin aa 1 to the C-terminus. derived from bovine brain preparation. Database link: P68138 <div>  Run BLAST with  Run BLAST with </div>
ポジティブ・コントロール	WB: Rat and mouse brain lysate; NIH/3T3, HEK-293, HeLa and SH-SY5Y cell lysate. ICC/IF: HeLa cells.
特記事項	<p>The Life Science industry has been in the grips of a reproducibility crisis for a number of years. Abcam is leading the way in addressing this with our range of recombinant monoclonal antibodies and knockout edited cell lines for gold-standard validation. Please check that this product meets your needs before purchasing.</p> <p>If you have any questions, special requirements or concerns, please send us an inquiry and/or contact our Support team ahead of purchase. Recommended alternatives for this product can be found below, along with publications, customer reviews and Q&As</p>

製品の特性

製品の状態	Liquid
保存方法	Shipped at 4°C. Store at +4°C short term (1-2 weeks). Upon delivery aliquot. Store at -20°C long term. Avoid freeze / thaw cycle.
バッファー	Preservative: 0.03% Sodium azide Constituents: 49.98% PBS, 49.98% Glycerol
精製度	Protein G purified
ポリ/モノ	モノクローナル

クローン名	5J11
アイソタイプ	IgG1

アプリケーション

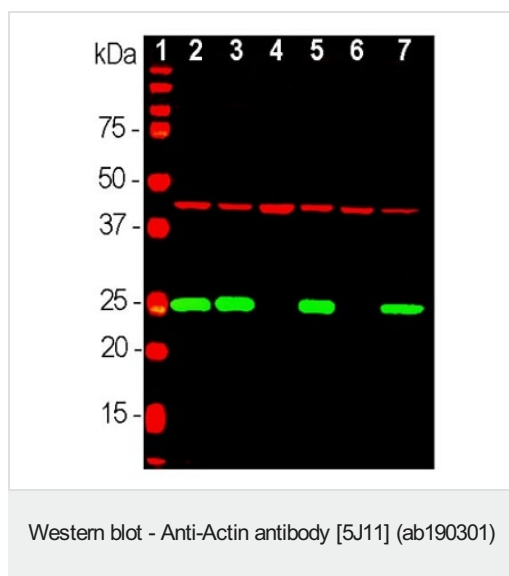
The Abpromise guarantee Abpromise保証は、 次のテスト済みアプリケーションにおけるab190301の使用に適用されます
アプリケーションノートには、推奨の開始希釈率がありますが、適切な希釈率につきましてはご検討ください。

アプリケーション	Abreviews	特記事項
ICC/IF		1/500 - 1/1000.
WB		1/1000. Predicted molecular weight: 42 kDa.

ターゲット情報

機能	Actins are highly conserved proteins that are involved in various types of cell motility and are ubiquitously expressed in all eukaryotic cells.
関連疾患	<p>Defects in ACTA1 are the cause of nemaline myopathy type 3 (NEM3) [MIM:161800]. A form of nemaline myopathy. Nemaline myopathies are muscular disorders characterized by muscle weakness of varying severity and onset, and abnormal thread-or rod-like structures in muscle fibers on histologic examination. The phenotype at histological level is variable. Some patients present areas devoid of oxidative activity containing (cores) within myofibers. Core lesions are unstructured and poorly circumscribed.</p> <p>Defects in ACTA1 are a cause of myopathy congenital with excess of thin myofilaments (MPCETM) [MIM:161800]. A congenital muscular disorder characterized at histological level by areas of sarcoplasm devoid of normal myofibrils and mitochondria, and replaced with dense masses of thin filaments. Central cores, rods, ragged red fibers, and necrosis are absent.</p> <p>Defects in ACTA1 are a cause of congenital myopathy with fiber-type disproportion (CFTD) [MIM:255310]; also known as congenital fiber-type disproportion myopathy (CFTDM). CFTD is a genetically heterogeneous disorder in which there is relative hypotrophy of type 1 muscle fibers compared to type 2 fibers on skeletal muscle biopsy. However, these findings are not specific and can be found in many different myopathic and neuropathic conditions.</p>
配列類似性	Belongs to the actin family.
細胞内局在	Cytoplasm > cytoskeleton.

画像



All lanes : Anti-Actin antibody [5J11] (ab190301) at 1/1000 dilution

Lane 1 : Protein standard

Lane 2 : Rat brain lysate

Lane 3 : Mouse brain lysate

Lane 4 : NIH/3T3 (mouse embryo fibroblast cell line) cell lysate

Lane 5 : HEK-293 (human epithelial cell line from embryonic kidney) cell lysate

Lane 6 : HeLa (human epithelial cell line from cervix adenocarcinoma) cell lysate

Lane 7 : SH-SY5Y (human neuroblastoma cell line from bone marrow) cell lysate

Predicted band size: 42 kDa

The same blot was simultaneously probed with chicken pAb to UCHL-1, a marker of neuronal lineage cells (green).



Immunofluorescent analysis of HeLa cells labeling Actin with ab190301 at 1/1000 dilution (green) and chicken polyclonal antibody to Vimentin (red). The blue stain reveals DNA in the nuclei of these cells.

Please note: All products are "FOR RESEARCH USE ONLY. NOT FOR USE IN DIAGNOSTIC PROCEDURES"

Our Abpromise to you: Quality guaranteed and expert technical support

- Replacement or refund for products not performing as stated on the datasheet
- Valid for 12 months from date of delivery
- Response to your inquiry within 24 hours

- We provide support in Chinese, English, French, German, Japanese and Spanish
- Extensive multi-media technical resources to help you
- We investigate all quality concerns to ensure our products perform to the highest standards

If the product does not perform as described on this datasheet, we will offer a refund or replacement. For full details of the Abpromise, please visit <https://www.abcam.co.jp/abpromise> or contact our technical team.

Terms and conditions

- Guarantee only valid for products bought direct from Abcam or one of our authorized distributors