


### Anti-ACSS2 antibody ab66038

KO 評価済

★★★★☆ 3 Abreviews 8 References 画像数 4

#### 製品の概要

製品名	Anti-ACSS2 antibody
製品の詳細	Rabbit polyclonal to ACSS2
由来種	Rabbit
特異性	Replenishment batches of our polyclonal antibody, ab66038 are tested in WB. Previous batches were additionally validated in IHC-P and IP. These applications are still expected to work and are covered by our Abpromise guarantee. You may also be interested in our alternative recombinant antibody, <a href="#">ab133664</a> .
アプリケーション	<b>適用あり:</b> WB, IHC-P, IP <b>適用なし:</b> ICC/IF
種交差性	<b>交差種:</b> Human <b>交差が予測される動物種:</b> Mouse, Rat 
免疫原	Synthetic peptide corresponding to Human ACSS2 aa 650 to the C-terminus (C terminal) conjugated to keyhole limpet haemocyanin. (Peptide available as <a href="#">ab71894</a> , <a href="#">ab71895</a> )
ポジティブ・コントロール	This antibody gave a positive signal in Human Liver and Human Colon Tissue lysates and in the following whole cell lysates: HepG2; U-87 MG; Caco 2.
特記事項	<p>The Life Science industry has been in the grips of a reproducibility crisis for a number of years. Abcam is leading the way in addressing this with our range of recombinant monoclonal antibodies and knockout edited cell lines for gold-standard validation. Please check that this product meets your needs before purchasing.</p> <p>If you have any questions, special requirements or concerns, please send us an inquiry and/or contact our Support team ahead of purchase. Recommended alternatives for this product can be found below, along with publications, customer reviews and Q&amp;As</p>

#### 製品の特性

製品の状態	Liquid
保存方法	Shipped at 4°C. Store at +4°C short term (1-2 weeks). Upon delivery aliquot. Store at -20°C or -80°C. Avoid freeze / thaw cycle.

## バッファー

pH: 7.40  
Preservative: 0.02% Sodium azide  
Constituent: PBS

Batches of this product that have a concentration < 1mg/ml may have BSA added as a stabilising agent. If you would like information about the formulation of a specific lot, please contact our scientific support team who will be happy to help.

## 精製度

Immunogen affinity purified

## ポリ/モノ

ポリクローナル

## アイソタイプ

IgG

## アプリケーション

**The Abpromise guarantee**      **Abpromise保証は、** 次のテスト済みアプリケーションにおけるab66038の使用に適用されます  
アプリケーションノートには、推奨の開始希釈率がありますが、適切な希釈率につきましてはご検討ください。

アプリケーション	Abreviews	特記事項
WB	★★★★★ (1)	Use a concentration of 1 µg/ml. Detects a band of approximately 79 kDa (predicted molecular weight: 79 kDa).
IHC-P		Use a concentration of 5 µg/ml. Perform heat mediated antigen retrieval before commencing with IHC staining protocol.
IP	★★★★★ (1)	Use at an assay dependent concentration.

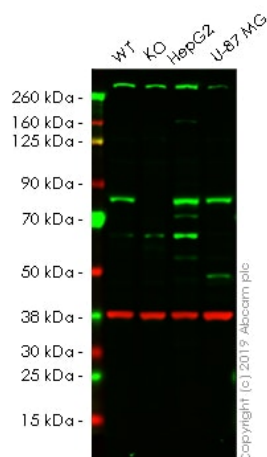
## 追加情報

Is unsuitable for ICC/IF.

## ターゲット情報

**機能**      Activates acetate so that it can be used for lipid synthesis or for energy generation.  
**配列類似性**      Belongs to the ATP-dependent AMP-binding enzyme family.  
**細胞内局在**      Cytoplasm.

## 画像



Western blot - Anti-ACSS2 antibody (ab66038)

**All lanes :** Anti-ACSS2 antibody (ab66038) at 1 µg/ml

**Lane 1 :** Wild-type HAP1 whole cell lysate

**Lane 2 :** ACSS2 knockout HAP1 whole cell lysate

**Lane 3 :** HepG2 whole cell lysate

**Lane 4 :** U-87 MG whole cell lysate

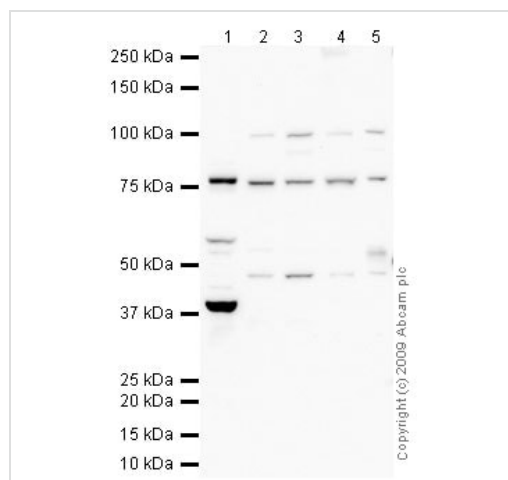
Lysates/proteins at 20 µg per lane.

**Predicted band size:** 79 kDa

**Observed band size:** 80 kDa

**Lanes 1 - 4:** Merged signal (red and green). Green - ab66038 observed at 80 kDa. Red - loading control, **ab8245**, observed at 37 kDa.

ab66038 was shown to recognize ACSS2 in wild-type HAP1 cells as signal was lost at the expected MW in ACSS2 knockout cells. Additional cross-reactive bands were observed in the wild-type and knockout cells. Wild-type and ACSS2 knockout samples were subjected to SDS-PAGE. The membrane was blocked with 3% Milk. Ab66038 and **ab8245** (Mouse anti GAPDH loading control) were incubated overnight at 4°C at 1 ug/ml and 1/20000 dilution respectively. Blots were developed with Goat anti-Rabbit IgG H&L (IRDye® 800CW) preabsorbed **ab216773** and Goat anti-Mouse IgG H&L (IRDye® 680RD) preabsorbed **ab216776** secondary antibodies at 1/20000 dilution for 1 hour at room temperature before imaging.



Western blot - Anti-ACSS2 antibody (ab66038)

**All lanes :** Anti-ACSS2 antibody (ab66038) at 1 µg/ml

**Lane 1 :** Human liver tissue lysate - total protein ([ab29889](#))

**Lane 2 :** HepG2 (Human hepatocellular liver carcinoma cell line)  
Whole Cell Lysate

**Lane 3 :** U-87 MG (Human glioblastoma astrocytoma) Whole Cell  
Lysate

**Lane 4 :** Human colon tissue lysate - total protein ([ab30051](#))

**Lane 5 :** Caco-2 whole cell lysate ([ab3950](#))

Lysates/proteins at 10 µg per lane.

### Secondary

**All lanes :** Goat polyclonal to Rabbit IgG - H&L - Pre-Adsorbed  
(HRP) at 1/3000 dilution

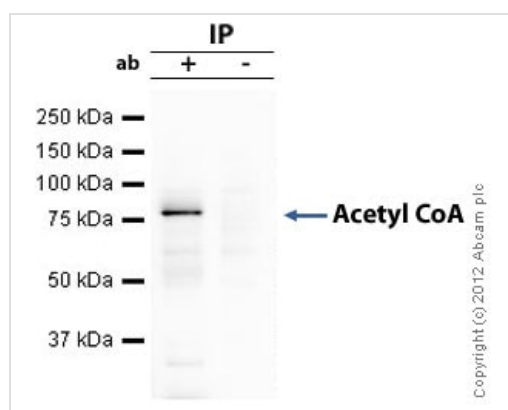
Performed under reducing conditions.

**Predicted band size:** 79 kDa

**Observed band size:** 79 kDa

**Additional bands at:** 100 kDa, 38 kDa, 45 kDa. We are unsure as  
to the identity of these extra bands.

**Exposure time:** 30 seconds



Immunoprecipitation - Anti-ACSS2 antibody  
(ab66038)

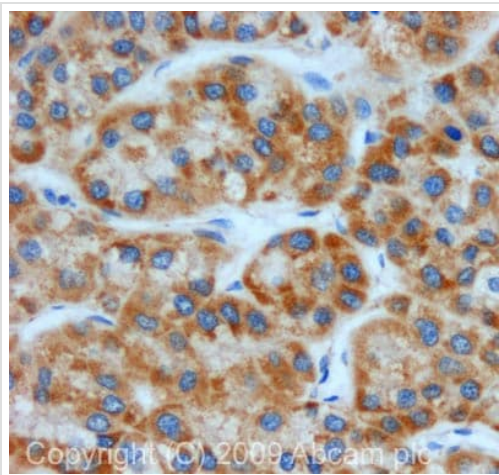
ACSS2 was immunoprecipitated using 0.5mg HepG2 whole cell  
extract, 5µg of Rabbit polyclonal to ACSS2 and 50µl of protein G  
magnetic beads (+). No antibody was added to the control (-).

The antibody was incubated under agitation with Protein G beads  
for 10min, HepG2 whole cell extract lysate diluted in RIPA buffer  
was added to each sample and incubated for a further 10min under  
agitation.

Proteins were eluted by addition of 40µl SDS loading buffer and  
incubated for 10min at 70°C; 10µl of each sample was separated  
on a SDS PAGE gel, transferred to a nitrocellulose membrane,  
blocked with 5% BSA and probed with ab66038.

Secondary: Mouse monoclonal [SB62a] Secondary Antibody to  
Rabbit IgG light chain (HRP) ([ab99697](#)).

Band: 79kDa: ACSS2.



Immunohistochemistry (Formalin/PFA-fixed paraffin-embedded sections) - Anti-ACSS2 antibody (ab66038)

IHC image of ACSS2 staining in human liver carcinoma formalin fixed paraffin embedded tissue section, performed on a Leica Bond™ system using the standard protocol F. The section was pre-treated using heat mediated antigen retrieval with sodium citrate buffer (pH6, epitope retrieval solution 1) for 20 mins. The section was then incubated with ab66038, 5µg/ml, for 15 mins at room temperature and detected using an HRP conjugated compact polymer system. DAB was used as the chromogen. The section was then counterstained with haematoxylin and mounted with DPX.

**Please note:** All products are "FOR RESEARCH USE ONLY. NOT FOR USE IN DIAGNOSTIC PROCEDURES"

#### Our Abpromise to you: Quality guaranteed and expert technical support

---

- Replacement or refund for products not performing as stated on the datasheet
- Valid for 12 months from date of delivery
- Response to your inquiry within 24 hours
- We provide support in Chinese, English, French, German, Japanese and Spanish
- Extensive multi-media technical resources to help you
- We investigate all quality concerns to ensure our products perform to the highest standards

If the product does not perform as described on this datasheet, we will offer a refund or replacement. For full details of the Abpromise, please visit <https://www.abcam.co.jp/abpromise> or contact our technical team.

#### Terms and conditions

---

- Guarantee only valid for products bought direct from Abcam or one of our authorized distributors