

Anti-Acinus antibody ab7352

★★★★★ **1 Abreviews** [画像数 4](#)

製品の概要

製品名	Anti-Acinus antibody
製品の詳細	Rabbit polyclonal to Acinus
由来種	Rabbit
特異性	The antibody recognises three different splice forms of Acinus, designated Acinus L, Acinus S and Acinus S'. The epitope is a region near the C-terminus of the cleaved active peptide p17.
アプリケーション	適用あり: ICC/IF, WB
種交差性	交差種: Human
免疫原	Synthetic peptide: TRTALHGVKWPQSNPK , corresponding to amino acids 1065-1080 of Human Acinus or 307 to 322 of human AcinusS, which are identical to those of mouse Acinus (2). The selected antigenic sequence is located near the C-terminus of the cleaved active peptide p17. Run BLAST with Run BLAST with
ポジティブ・コントロール	K562 whole cell lysate.
特記事項	<p>The Life Science industry has been in the grips of a reproducibility crisis for a number of years. Abcam is leading the way in addressing this with our range of recombinant monoclonal antibodies and knockout edited cell lines for gold-standard validation. Please check that this product meets your needs before purchasing.</p> <p>If you have any questions, special requirements or concerns, please send us an inquiry and/or contact our Support team ahead of purchase. Recommended alternatives for this product can be found below, along with publications, customer reviews and Q&As</p>

製品の特性

製品の状態	Liquid
保存方法	Shipped at 4°C. Upon delivery aliquot and store at -20°C or -80°C. Avoid repeated freeze / thaw cycles.
バッファー	pH: 7.2 Preservative: 0.02% Sodium azide
精製度	Immunogen affinity purified
特記事項 (精製)	Purified IgG was prepared from whole serum by affinity chromatography.

ポリモノ	ポリクローナル
アイソタイプ	IgG

アプリケーション

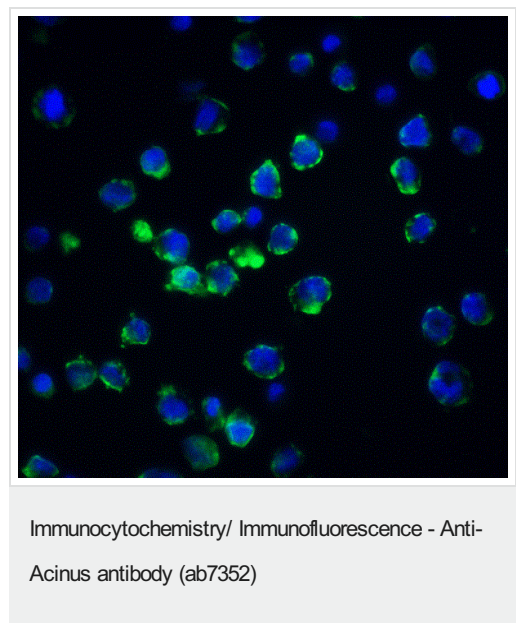
The Abpromise guarantee **Abpromise保証は、**次のテスト済みアプリケーションにおけるab7352の使用に適用されます
 アプリケーションノートには、推奨の開始希釈率がありますが、適切な希釈率につきましてはご検討ください。

アプリケーション	Abreviews	特記事項
ICC/IF		Use a concentration of 10 µg/ml.
WB	★★★★★ (1)	Use at an assay dependent concentration. Detects a band of approximately 220 kDa (predicted molecular weight: 151 kDa).Can be blocked with <u>Acinus peptide (ab8367)</u> .

ターゲット情報

機能	Component of a splicing-dependent multiprotein exon junction complex (EJC) deposited at splice junction on mRNAs. The EJC is a dynamic structure consisting of a few core proteins and several more peripheral nuclear and cytoplasmic associated factors that join the complex only transiently either during EJC assembly or during subsequent mRNA metabolism. Induces apoptotic chromatin condensation after activation by CASP3.
組織特異性	Ubiquitous.
配列類似性	Contains 1 SAP domain.
翻訳後修飾	Undergoes proteolytic cleavage; the processed form is active, contrary to the uncleaved form.
細胞内局在	Nucleus.

画像

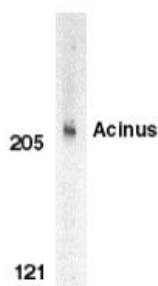


Immunocytochemistry/ Immunofluorescence of K562 cells staining Acinus with ab7352 at 20 µg/ml



Immunocytochemistry/ Immunofluorescence - Anti-Acinus antibody (ab7352)

ab7352 at 10µg/ml staining Acinus in K562 cells by ICC/IF



Western blot - Anti-Acinus antibody (ab7352)

Anti-Acinus antibody (ab7352) at 1 µg/ml + K562 whole cell lysate

Predicted band size: 151 kDa

Immunocytochemistry/ Immunofluorescence - Anti-Acinus antibody (ab7352)

Immunofluorescence of Acinus in Hela cells using ab7352 at 10 µg/ml.

Please note: All products are "FOR RESEARCH USE ONLY. NOT FOR USE IN DIAGNOSTIC PROCEDURES"

Our Abpromise to you: Quality guaranteed and expert technical support

- Replacement or refund for products not performing as stated on the datasheet
- Valid for 12 months from date of delivery
- Response to your inquiry within 24 hours
- We provide support in Chinese, English, French, German, Japanese and Spanish
- Extensive multi-media technical resources to help you
- We investigate all quality concerns to ensure our products perform to the highest standards

If the product does not perform as described on this datasheet, we will offer a refund or replacement. For full details of the Abpromise, please visit <https://www.abcam.co.jp/abpromise> or contact our technical team.

Terms and conditions

- Guarantee only valid for products bought direct from Abcam or one of our authorized distributors