


Anti-Acetylcholinesterase antibody ab97299

1 References [画像数 10](#)

製品の概要

製品名	Anti-Acetylcholinesterase antibody
製品の詳細	Rabbit polyclonal to Acetylcholinesterase
由来種	Rabbit
アプリケーション	適用あり: IHC-Fr, WB, ICC/IF, IHC-P
種交差性	交差種: Mouse, Rat, Human 交差が予測される動物種: Cow, Cat, Monkey 
免疫原	Recombinant fragment corresponding to Human Acetylcholinesterase aa 406-610. Database link: P22303
ポジティブ・コントロール	ICC/IF: HeLa IHC-Fro: E13.5 rat brain. IHC-P: Rat fore brain and brain, mouse colon and brain. WB: Raji cells, mouse and rat brain. Mouse lung.
特記事項	<p>The Life Science industry has been in the grips of a reproducibility crisis for a number of years. Abcam is leading the way in addressing this with our range of recombinant monoclonal antibodies and knockout edited cell lines for gold-standard validation. Please check that this product meets your needs before purchasing.</p> <p>If you have any questions, special requirements or concerns, please send us an inquiry and/or contact our Support team ahead of purchase. Recommended alternatives for this product can be found below, along with publications, customer reviews and Q&As</p>

製品の特性

製品の状態	Liquid
保存方法	Shipped at 4°C. Store at +4°C short term (1-2 weeks). Upon delivery aliquot. Store at -20°C or -80°C. Avoid freeze / thaw cycle.
バッファー	pH: 7.00 Preservative: 0.025% Proclin 300 Constituents: 79% PBS, 20% Glycerol (glycerin, glycerine)
精製度	Immunogen affinity purified
ポリ/モノ	ポリクローナル
アイソタイプ	IgG

アプリケーション

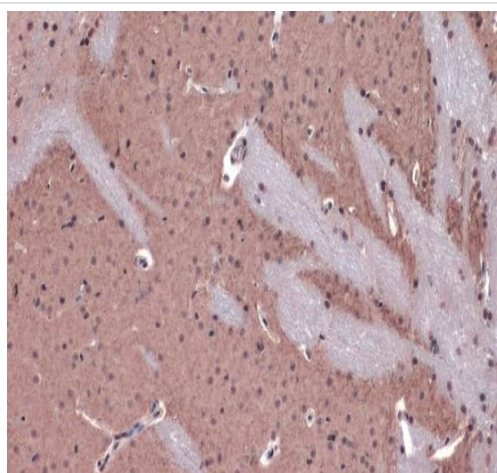
The Abpromise guarantee **Abpromise保証は、次のテスト済みアプリケーションにおけるab97299の使用に適用されず**
アプリケーションノートには、推奨の開始希釈率がありますが、適切な希釈率につきましてはご検討ください。

アプリケーション	Abreviews	特記事項
IHC-Fr		1/100 - 1/1000.
WB		1/500 - 1/3000. Predicted molecular weight: 68 kDa.
ICC/IF		1/100 - 1/200.
IHC-P		1/100 - 1/1000.

ターゲット情報

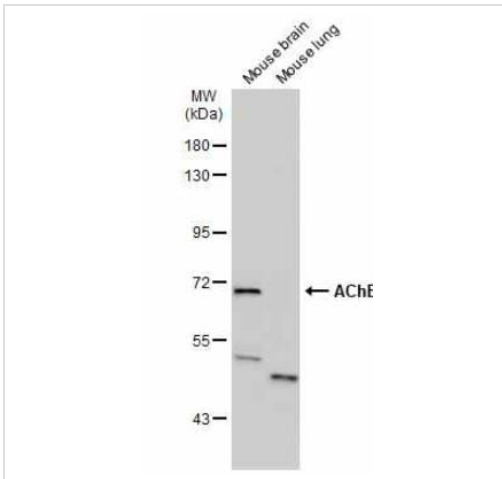
機能	Terminates signal transduction at the neuromuscular junction by rapid hydrolysis of the acetylcholine released into the synaptic cleft. Role in neuronal apoptosis.
組織特異性	Isoform H is highly expressed in erythrocytes.
配列類似性	Belongs to the type-B carboxylesterase/lipase family.
細胞内局在	Cell membrane; Cell junction > synapse. Secreted. Cell membrane and Nucleus. Only observed in apoptotic nuclei.

画像



Paraffin embedded mouse brain tissue stained for AChE using ab97299 at 1/1000 dilution in immunohistochemical analysis.

Immunohistochemistry (Formalin/PFA-fixed paraffin-embedded sections) - Anti-Acetylcholinesterase antibody (ab97299)



Western blot - Anti-Acetylcholinesterase antibody (ab97299)

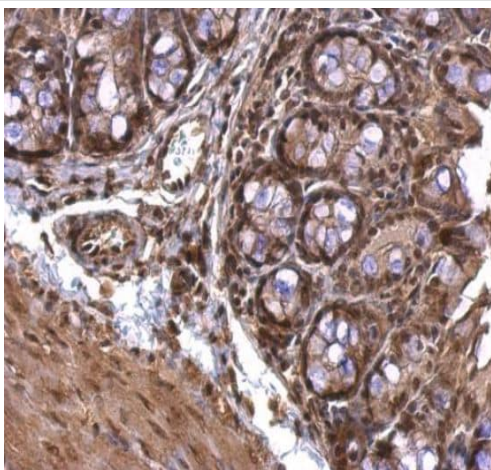
All lanes : Anti-Acetylcholinesterase antibody (ab97299) at 1/500 dilution

Lane 1 : Mouse brain

Lane 2 : Mouse lung

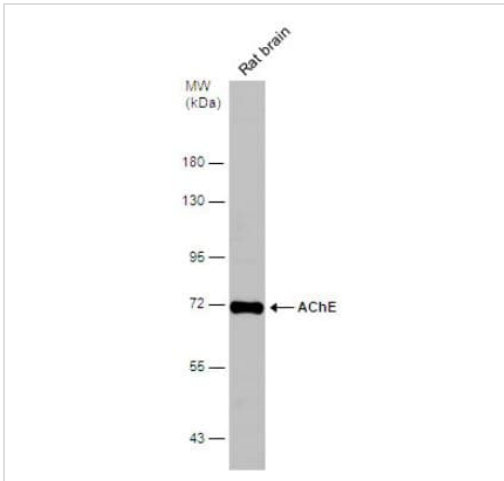
Lysates/proteins at 50 µg per lane.

Predicted band size: 68 kDa



Immunohistochemistry (Formalin/PFA-fixed paraffin-embedded sections) - Anti-Acetylcholinesterase antibody (ab97299)

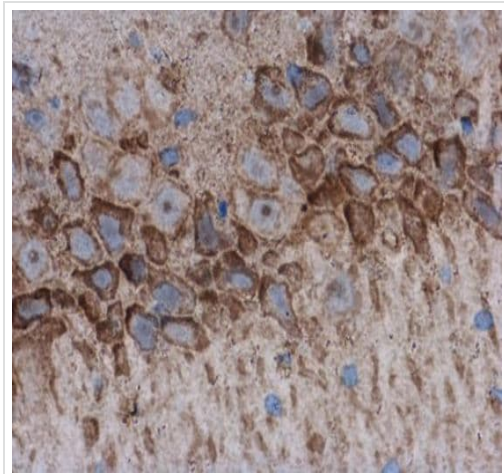
Paraffin embedded mouse colon tissue stained for AChE using ab97299 at 1/1000 dilution in immunohistochemical analysis.



Western blot - Anti-Acetylcholinesterase antibody (ab97299)

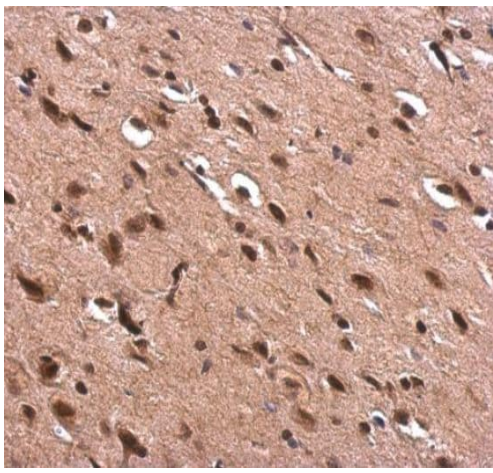
Anti-Acetylcholinesterase antibody (ab97299) at 1/500 dilution + Rat brain at 50 μ g

Predicted band size: 68 kDa



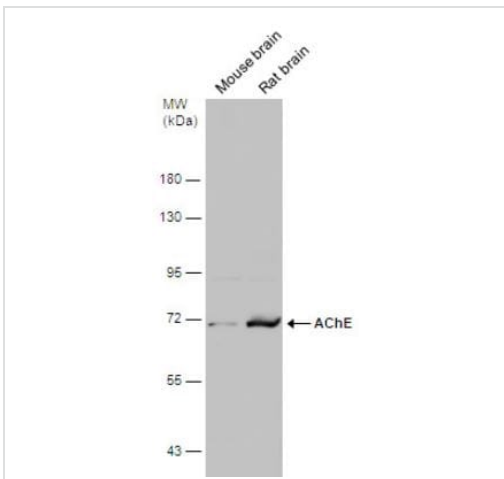
Immunohistochemistry (Formalin/PFA-fixed paraffin-embedded sections) - Anti-Acetylcholinesterase antibody (ab97299)

Paraffin embedded rat brain tissue stained for AChE using ab97299 at 1/1000 dilution in immunohistochemical analysis.



Immunohistochemistry (Formalin/PFA-fixed paraffin-embedded sections) - Anti-Acetylcholinesterase antibody (ab97299)

Paraffin embedded rat fore brain tissue stained for AChE using ab97299 at 1/1000 dilution in immunohistochemical analysis.



Western blot - Anti-Acetylcholinesterase antibody (ab97299)

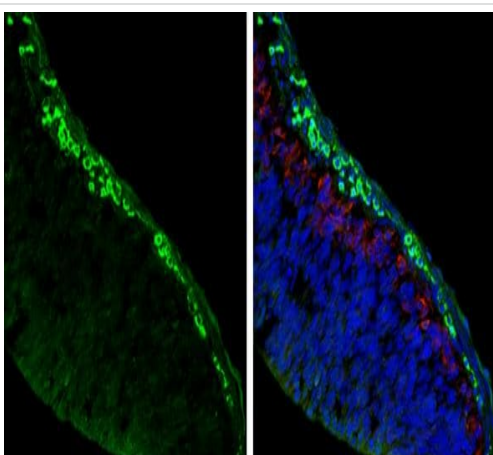
All lanes : Anti-Acetylcholinesterase antibody (ab97299) at 1/500 dilution

Lane 1 : Mouse Brain lysate

Lane 2 : Rat brain lysate

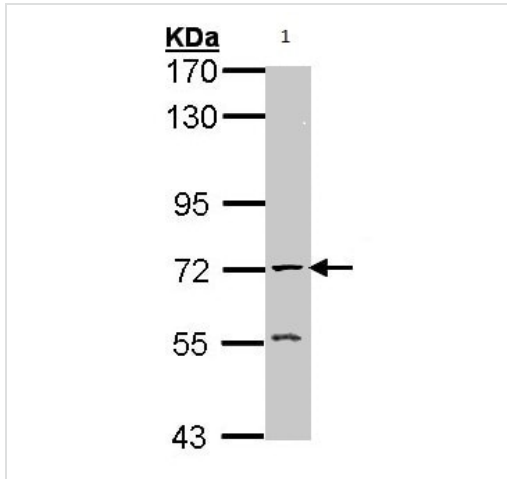
Lysates/proteins at 50 μ g per lane.

Predicted band size: 68 kDa



Immunohistochemistry (Frozen sections) - Anti-Acetylcholinesterase antibody (ab97299)

Frozen sectioned E13.5 rat brain tissue stained for AChE using ab97299 at 1/1000 dilution in immunohistochemical analysis.

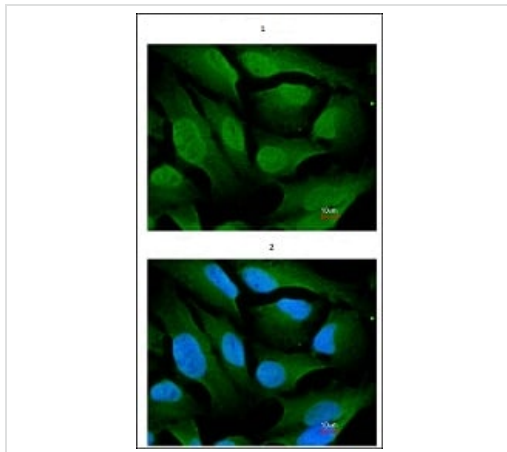


Anti-Acetylcholinesterase antibody (ab97299) at 1/1000 dilution +
Raji whole cell lysate at 30 µg

Predicted band size: 68 kDa

7.5% SDS PAGE

Western blot - Anti-Acetylcholinesterase antibody
(ab97299)



Immunofluorescence analysis of paraformaldehyde-fixed HeLa,
using ab97299 (1) and merged with DNA probe (2) at 1/200
dilution.

Immunocytochemistry/ Immunofluorescence - Anti-
Acetylcholinesterase antibody (ab97299)

Please note: All products are "FOR RESEARCH USE ONLY. NOT FOR USE IN DIAGNOSTIC PROCEDURES"

Our Abpromise to you: Quality guaranteed and expert technical support

- Replacement or refund for products not performing as stated on the datasheet
- Valid for 12 months from date of delivery
- Response to your inquiry within 24 hours
- We provide support in Chinese, English, French, German, Japanese and Spanish
- Extensive multi-media technical resources to help you
- We investigate all quality concerns to ensure our products perform to the highest standards

If the product does not perform as described on this datasheet, we will offer a refund or replacement. For full details of the Abpromise, please visit <https://www.abcam.co.jp/abpromise> or contact our technical team.

Terms and conditions

- Guarantee only valid for products bought direct from Abcam or one of our authorized distributors