


Product datasheet

Anti-ACE2 antibody ab65863

KO 評価済

★★★★★ [1 Abreviews](#) [2 References](#) [画像数 4](#)

製品の概要

製品名	Anti-ACE2 antibody
製品の詳細	Rabbit polyclonal to ACE2
由来種	Rabbit
アプリケーション	適用あり: IHC-P, WB 適用なし: ICC/IF
種交差性	交差種: Human 交差が予測される動物種: Cat, Dog, Monkey, Orangutan 
免疫原	Synthetic peptide corresponding to Human ACE2 aa 750 to the C-terminus (C terminal) conjugated to keyhole limpet haemocyanin. (Peptide available as ab87121)
ポジティブ・コントロール	WB: Human kidney tissue lysate; HepG2, Caco-2 and Calu-3 cell lysates. IHC-P: Human kidney carcinoma tissue.
特記事項	<p>The Life Science industry has been in the grips of a reproducibility crisis for a number of years. Abcam is leading the way in addressing this with our range of recombinant monoclonal antibodies and knockout edited cell lines for gold-standard validation. Please check that this product meets your needs before purchasing.</p> <p>If you have any questions, special requirements or concerns, please send us an inquiry and/or contact our Support team ahead of purchase. Recommended alternatives for this product can be found below, along with publications, customer reviews and Q&As</p>

製品の特性

製品の状態	Liquid
保存方法	Shipped at 4°C. Store at +4°C short term (1-2 weeks). Upon delivery aliquot. Store at -20°C or -80°C. Avoid freeze / thaw cycle.
バッファー	pH: 7.40 Preservative: 0.02% Sodium azide Constituent: PBS

Batches of this product that have a concentration < 1mg/ml may have BSA added as a stabilising

agent. If you would like information about the formulation of a specific lot, please contact our scientific support team who will be happy to help.

精製度	Immunogen affinity purified
ポリモノ	ポリクローナル
アイソタイプ	IgG

アプリケーション

The Abpromise guarantee **Abpromise保証は、次のテスト済みアプリケーションにおけるab65863の使用に適用されます**
アプリケーションノートには、推奨の開始希釈率がありますが、適切な希釈率につきましてはご確認ください。

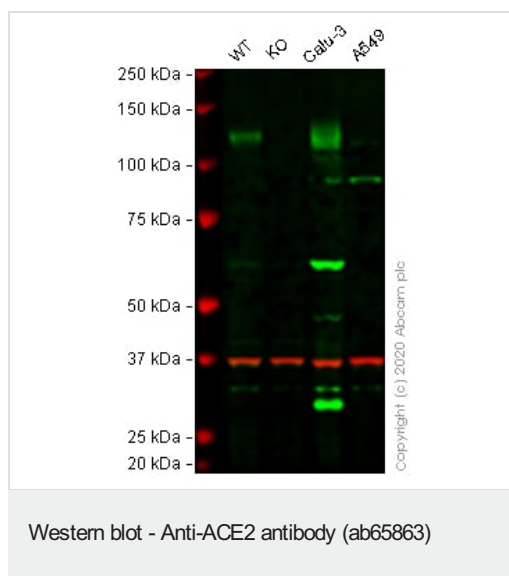
アプリケーション	Abreviews	特記事項
IHC-P	★★★★★ (1)	Use a concentration of 1 µg/ml. Perform heat mediated antigen retrieval before commencing with IHC staining protocol.
WB		Use a concentration of 1 µg/ml. Detects a band of approximately 110 kDa (predicted molecular weight: 92 kDa).

追加情報 Is unsuitable for ICC/IF.

ターゲット情報

機能	Carboxypeptidase which converts angiotensin I to angiotensin 1-9, a peptide of unknown function, and angiotensin II to angiotensin 1-7, a vasodilator. Also able to hydrolyze apelin-13 and dynorphin-13 with high efficiency. May be an important regulator of heart function. In case of human coronaviruses SARS and HCoV-NL63 infections, serve as functional receptor for the spike glycoprotein of both coronaviruses.
組織特異性	Expressed in endothelial cells from small and large arteries, and in arterial smooth muscle cells. Expressed in lung alveolar epithelial cells, enterocytes of the small intestine, Leydig cells and Sertoli cells (at protein level). Expressed in heart, kidney, testis, and gastrointestinal system.
配列類似性	Belongs to the peptidase M2 family.
翻訳後修飾	N-glycosylation on Asn-90 may limit SARS infectivity.
細胞内局在	Secreted and Cell membrane.

画像



All lanes : Anti-ACE2 antibody (ab65863) at 1 µg/ml

Lane 1 : Wild-type HepG2 cell lysate

Lane 2 : ACE2 knockout HepG2 cell lysate

Lane 3 : Calu-3 cell lysate

Lane 4 : A549 cell lysate

Lysates/proteins at 30 µg per lane.

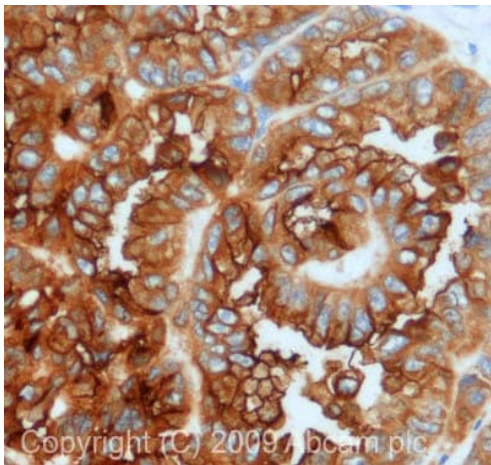
Performed under reducing conditions.

Predicted band size: 92 kDa

Observed band size: 130 kDa

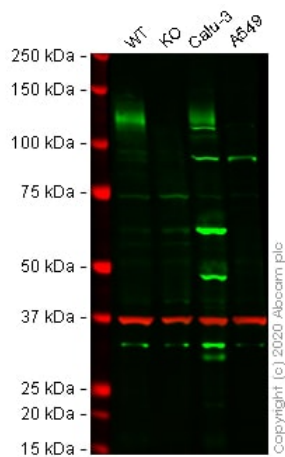
Lanes 1 - 4: Merged signal (red and green). Green - ab65863 observed at 130 kDa. Red - loading control [ab8245](#) (Mouse anti-GAPDH antibody [6C5]) observed at 37kDa.

ab65863 was shown to react with ACE2 in wild-type HepG2 cells in western blot with loss of signal observed in ACE2 knockout cell line [ab273733](#) (knockout cell lysate [ab275495](#)). Wild-type and ACE2 knockout HepG2 cell lysates were subjected to SDS-PAGE. Membranes were blocked in fluorescent western blot (TBS-based) blocking solution before incubation with ab65863 and [ab8245](#) (Mouse anti-GAPDH antibody [6C5]) overnight at 4°C at 1 µg/ml and a 1 in 20000 dilution respectively. Blots were incubated with Goat anti-Rabbit IgG H&L (IRDye® 800CW) preabsorbed ([ab216773](#)) and Goat anti-Mouse IgG H&L (IRDye® 680RD) preabsorbed ([ab216776](#)) secondary antibodies at 1 in 20000 dilution for 1 hour at room temperature before imaging.



Immunohistochemistry (Formalin/PFA-fixed paraffin-embedded sections) - Anti-ACE2 antibody (ab65863)

IHC image of ACE2 staining in human kidney carcinoma formalin fixed paraffin embedded tissue section, performed on a Leica Bond™ system using the standard protocol F. The section was pre-treated using heat mediated antigen retrieval with sodium citrate buffer (pH6, epitope retrieval solution 1) for 20 mins. The section was then incubated with **ab65863**, 1µg/ml, for 15 mins at room temperature and detected using an HRP conjugated compact polymer system. DAB was used as the chromogen. The section was then counterstained with haematoxylin and mounted with DPX.



Western blot - Anti-ACE2 antibody (ab65863)

All lanes : Anti-ACE2 antibody (ab65863) at 1 µg/ml

Lane 1 : Wild-type Caco-2 cell lysate

Lane 2 : ACE2 knockout Caco-2 cell lysate

Lane 3 : Calu-3 cell lysate

Lane 4 : A549 cell lysate

Lysates/proteins at 30 µg per lane.

Performed under reducing conditions.

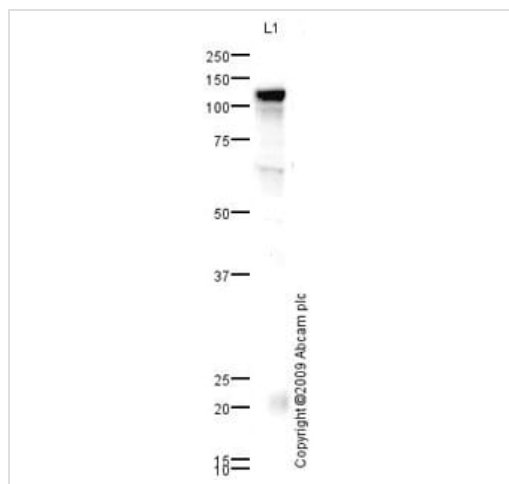
Predicted band size: 92 kDa

Observed band size: 125 kDa

Lanes 1 -4: Merged signal (red and green). Green - ab65863 observed at 125 kDa. Red - loading control **ab8245** (Mouse anti-GAPDH antibody [6C5]) observed at 37kDa.

ab65863 was shown to react with ACE2 in Caco-2 wild-type cells in western blot with loss of signal observed in ACE2 knockout cell line **ab273731** (knockout cell lysate **ab275516**). Wild-type and ACE2 knockout Caco-2 cell lysates were subjected to SDS-PAGE. Membranes were blocked in fluorescent western blot (TBS-based) blocking solution before incubation with ab65863 and **ab8245**

(Mouse anti-GAPDH antibody [6C5]) overnight at 4°C at 1 µg/ml and a 1 in 20000 dilution respectively. Blots were incubated with Goat anti-Rabbit IgG H&L (IRDye® 800CW) preabsorbed (**ab216773**) and Goat anti-Mouse IgG H&L (IRDye® 680RD) preabsorbed (**ab216776**) secondary antibodies at 1 in 20000 dilution for 1 hour at room temperature before imaging.



Western blot - Anti-ACE2 antibody (ab65863)

Anti-ACE2 antibody (ab65863) at 1 µg/ml + Human kidney tissue lysate - total protein (**ab30203**) at 10 µg

Secondary

Goat polyclonal to Rabbit IgG - H&L - Pre-Adsorbed (HRP) at 1/3000 dilution

Developed using the ECL technique.

Performed under reducing conditions.

Predicted band size: 92 kDa

Observed band size: 110 kDa

ACE2 contains a number of potential glycosylation sites (SwissProt) which may explain its migration at a higher molecular weight than predicted.

Please note: All products are "FOR RESEARCH USE ONLY. NOT FOR USE IN DIAGNOSTIC PROCEDURES"

Our Abpromise to you: Quality guaranteed and expert technical support

- Replacement or refund for products not performing as stated on the datasheet
- Valid for 12 months from date of delivery
- Response to your inquiry within 24 hours
- We provide support in Chinese, English, French, German, Japanese and Spanish
- Extensive multi-media technical resources to help you
- We investigate all quality concerns to ensure our products perform to the highest standards

If the product does not perform as described on this datasheet, we will offer a refund or replacement. For full details of the Abpromise, please visit <https://www.abcam.co.jp/abpromise> or contact our technical team.

Terms and conditions

- Guarantee only valid for products bought direct from Abcam or one of our authorized distributors