

Anti-ACE2 antibody ab15348

★★★★★ [13 Abreviews](#) [192 References](#) [画像数 10](#)

製品の概要

製品名	Anti-ACE2 antibody
製品の詳細	Rabbit polyclonal to ACE2
由来種	Rabbit
特異性	No cross reactivity to ACE1.
アプリケーション	適用あり: ICC/IF, ELISA, IHC (PFA fixed), IHC-Fr, WB, IHC-P
種交差性	交差種: Mouse, Rat, Cat, Human, Ferret, Macaque monkey, Bat
免疫原	Synthetic peptide within Human ACE2 aa 750 to the C-terminus. The exact immunogen sequence used to generate this antibody is proprietary information. If additional detail on the immunogen is needed to determine the suitability of the antibody for your needs, please contact our Scientific Support team to discuss your requirements. Database link: Q9BYF1

 [Run BLAST with](#)

 [Run BLAST with](#)

ポジティブ・コントロール	WB: Human testis, lung, intestine, breast and kidney tissue lysates. Caco2 cell lysate. Rat skin, spleen, heart and brain tissue lysates. Mouse liver, spleen, heart, bladder, pancreas and stomach tissue lysates. IHC-P: Human lung, testis and kidney tissue. Rat lung tissue. Mouse lung tissue.
--------------	--

特記事項	<p>The Life Science industry has been in the grips of a reproducibility crisis for a number of years. Abcam is leading the way in addressing this with our range of recombinant monoclonal antibodies and knockout edited cell lines for gold-standard validation. Please check that this product meets your needs before purchasing.</p> <p>If you have any questions, special requirements or concerns, please send us an inquiry and/or contact our Support team ahead of purchase. Recommended alternatives for this product can be found below, along with publications, customer reviews and Q&As</p>
------	---

製品の特性

製品の状態	Liquid
保存方法	Shipped at 4°C. Store at +4°C.
バッファー	pH: 7.2 Preservative: 0.02% Sodium azide
精製度	Immunogen affinity purified
一次抗体 備考	No cross reactivity to ACE1.

ポリモノ
アイソタイプ

ポリクローナル
IgG

アプリケーション

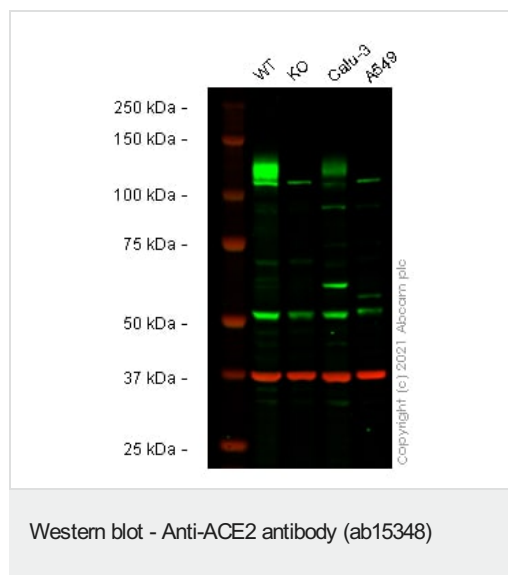
The Abpromise guarantee **Abpromise保証は、次のテスト済みアプリケーションにおけるab15348の使用に適用されます**
アプリケーションノートには、推奨の開始希釈率がありますが、適切な希釈率につきましてはご確認ください。

アプリケーション	Abreviews	特記事項
ICC/IF	★★★★★ (2)	Use at an assay dependent concentration.
ELISA		Use at an assay dependent concentration.
IHC (PFA fixed)		Use at an assay dependent concentration.
IHC-Fr	★★★★★ (1)	Use at an assay dependent concentration.
WB	★★★★★ (5)	Use a concentration of 1 - 2 µg/ml. Detects a band of approximately 90 kDa (predicted molecular weight: 97 kDa).
IHC-P	★★★★★ (5)	Use a concentration of 2 µg/ml.

ターゲット情報

機能	Carboxypeptidase which converts angiotensin I to angiotensin 1-9, a peptide of unknown function, and angiotensin II to angiotensin 1-7, a vasodilator. Also able to hydrolyze apelin-13 and dynorphin-13 with high efficiency. May be an important regulator of heart function. In case of human coronaviruses SARS and HCoV-NL63 infections, serve as functional receptor for the spike glycoprotein of both coronaviruses.
組織特異性	Expressed in endothelial cells from small and large arteries, and in arterial smooth muscle cells. Expressed in lung alveolar epithelial cells, enterocytes of the small intestine, Leydig cells and Sertoli cells (at protein level). Expressed in heart, kidney, testis, and gastrointestinal system.
配列類似性	Belongs to the peptidase M2 family.
翻訳後修飾	N-glycosylation on Asn-90 may limit SARS infectivity.
細胞内局在	Secreted and Cell membrane.

画像



All lanes : Anti-ACE2 antibody (ab15348) at 1/1000 dilution

Lane 1 : Wild-type Caco-2 cell lysate

Lane 2 : ACE2 knockout Caco-2 cell lysate

Lane 3 : Calu-3 cell lysate

Lane 4 : A549 cell lysate

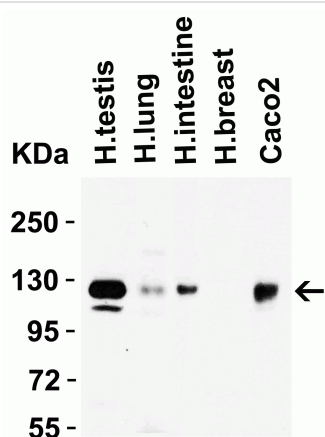
Lysates/proteins at 30 µg per lane.

Performed under reducing conditions.

Predicted band size: 97 kDa

Observed band size: 120-135 kDa

False colour image of Western blot: Anti-ACE2 antibody staining at 1/1000 dilution, shown in green; Mouse anti-GAPDH antibody [6C5] ([ab8245](#)) loading control staining at 1/20000 dilution, shown in red. In Western blot, ab15348 was shown to bind specifically to ACE2. A band was observed at 120-135 kDa in wild-type Caco-2 cell lysates with no signal observed at this size in ACE2 knockout cell line [ab277338](#) (knockout cell lysate [ab275516](#)). To generate this image, wild-type and ACE2 knockout Caco-2 cell lysates were analysed. First, samples were run on an SDS-PAGE gel then transferred onto a nitrocellulose membrane. Membranes were blocked in 5 % milk in TBS-0.1 % Tween[®] 20 (TBS-T) before incubation with primary antibodies overnight at 4 °C. Blots were washed four times in TBS-T, incubated with secondary antibodies for 1 h at room temperature, washed again four times then imaged. Secondary antibodies used were Goat anti-Rabbit IgG H&L (IRDye[®] 800CW) preabsorbed ([ab216773](#)) and Goat anti-Mouse IgG H&L (IRDye[®] 680RD) preabsorbed ([ab216776](#)) at 1/20000 dilution.



Western blot - Anti-ACE2 antibody (ab15348)

All lanes : Anti-ACE2 antibody (ab15348) at 2 µg/ml

Lane 1 : Human Testis Lysate

Lane 2 : Human Lung lysate

Lane 3 : Human intestine lysate

Lane 4 : Human Breast lysate

Lane 5 : Caco2 cell lysate

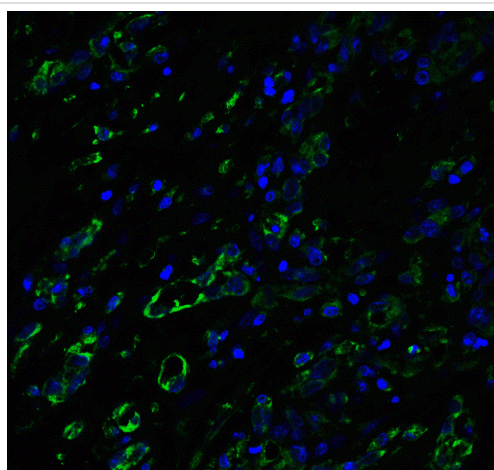
Lysates/proteins at 15 µg per lane.

Secondary

All lanes : Goat anti-rabbit IgG HRP conjugate at 1/10000 dilution

Predicted band size: 97 kDa

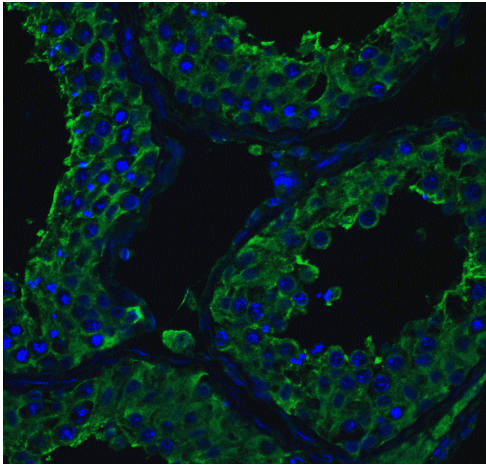
Observed band size: 125 kDa



Immunohistochemistry (Formalin/PFA-fixed paraffin-embedded sections) - Anti-ACE2 antibody (ab15348)

Immunohistochemistry (Formalin/PFA-fixed paraffin-embedded sections) analysis of human lung tissue labeling ACE2 with ab15348 at 20 µg/mL.

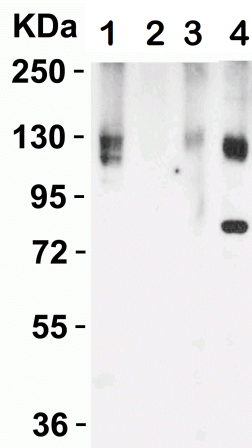
Goat anti-rabbit IgG secondary antibody at 1/500 dilution (green) and DAPI staining (blue).



Immunohistochemistry (Formalin/PFA-fixed paraffin-embedded sections) - Anti-ACE2 antibody (ab15348)

Immunohistochemistry (Formalin/PFA-fixed paraffin-embedded sections) analysis of human testis tissue labeling ACE2 with ab15348 at 20 µg/mL.

Goat anti-rabbit IgG secondary antibody at 1/500 dilution (green) and DAPI staining (blue).



Western blot - Anti-ACE2 antibody (ab15348)

All lanes : Anti-ACE2 antibody (ab15348) at 2 µg/ml

Lane 1 : Rat skin tissue lysate

Lane 2 : Rat spleen tissue lysate

Lane 3 : Rat heart tissue lysate

Lane 4 : Rat brain tissue lysate

Lysates/proteins at 15 µg per lane.

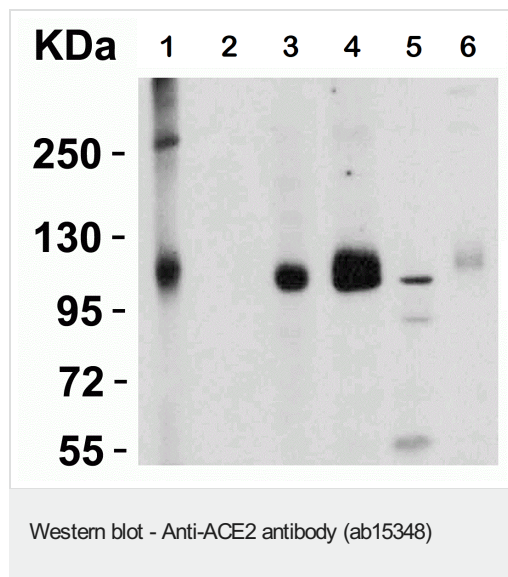
Secondary

All lanes : Goat anti-rabbit IgG HRP conjugate at 1/10000 dilution

Predicted band size: 97 kDa

Observed band size: 125 kDa

Western blot of ab15348 incubated for 1h at RT in 5% NFDM/TBST.



All lanes : Anti-ACE2 antibody (ab15348) at 2 µg/ml

Lane 1 : Mouse liver tissue lysate

Lane 2 : Mouse spleen tissue lysate

Lane 3 : Mouse heart tissue lysate

Lane 4 : Mouse bladder tissue lysate

Lane 5 : Mouse pancreas tissue lysate

Lane 6 : Mouse stomach tissue lysate

Lysates/proteins at 15 µg per lane.

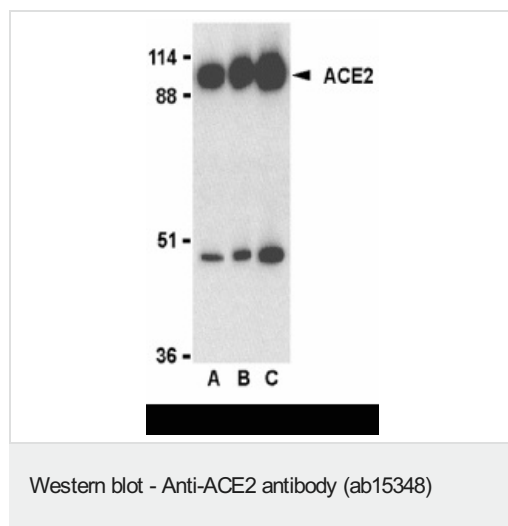
Secondary

All lanes : Goat anti-rabbit IgG HRP conjugate at 1/10000 dilution

Predicted band size: 97 kDa

Observed band size: 110 kDa

Western blot of ab15348 incubated for 1h at RT in 5% NFDM/TBST.



Lane 1 : Anti-ACE2 antibody (ab15348) at 0.5 µg/ml

Lane 2 : Anti-ACE2 antibody (ab15348) at 1 µg/ml

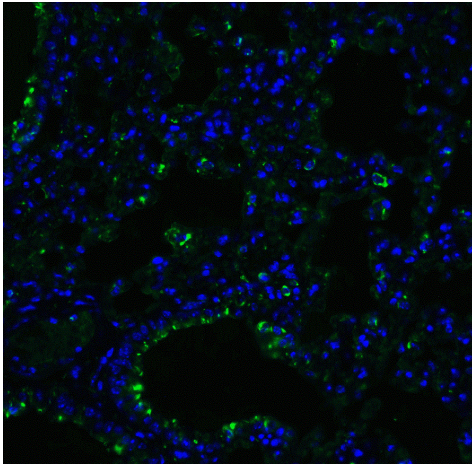
Lane 3 : Anti-ACE2 antibody (ab15348) at 2 µg/ml

All lanes : Human Kidney Lysate

Predicted band size: 97 kDa

Observed band size: 105 kDa

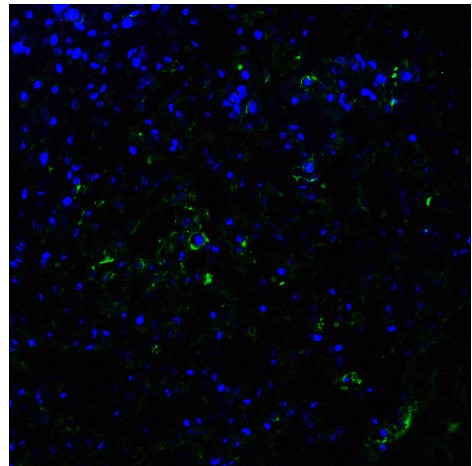
Western blot analysis of ACE2 in human kidney lysate with **ab15438** at 0.5 µg/mL (lane A), 1 µg/mL (lane B), and 2 µg/mL (lane C).



Immunohistochemistry (Formalin/PFA-fixed paraffin-embedded sections) analysis of mouse lung tissue labeling ACE2 with ab15348 at 20 µg/mL.

Goat anti-rabbit IgG secondary antibody at 1/500 dilution (green) and DAPI staining (blue).

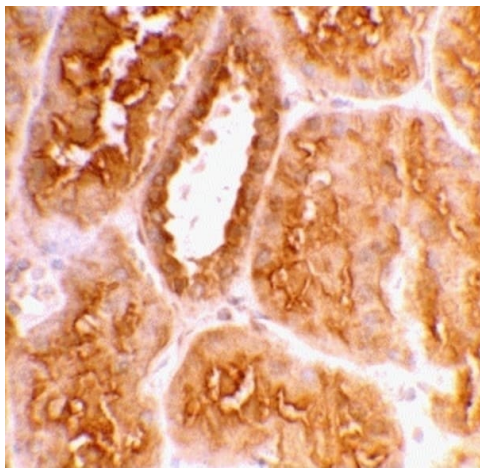
Immunohistochemistry (Formalin/PFA-fixed paraffin-embedded sections) - Anti-ACE2 antibody (ab15348)



Immunohistochemistry (Formalin/PFA-fixed paraffin-embedded sections) analysis of rat lung tissue labeling ACE2 with ab15348 at 20 µg/mL.

Goat anti-rabbit IgG secondary antibody at 1/500 dilution (green) and DAPI staining (blue).

Immunohistochemistry (Formalin/PFA-fixed paraffin-embedded sections) - Anti-ACE2 antibody (ab15348)



Immunohistochemistry (Formalin/PFA-fixed paraffin-embedded sections) - Anti-ACE2 antibody (ab15348)

Immunohistochemistry (Formalin/PFA-fixed paraffin-embedded sections) analysis of human kidney tissue labeling ACE2 with ab15348 at 2 µg/mL.

Tissue was fixed with formaldehyde and blocked with 10% serum for 1 hour at room temperature; antigen retrieval was by heat mediation with a citrate buffer (pH6). Samples were incubated with primary antibody overnight at 4°C. A goat anti-rabbit IgG HRP at 1/250 was used as secondary. Counter stained with Hematoxylin.

Please note: All products are "FOR RESEARCH USE ONLY. NOT FOR USE IN DIAGNOSTIC PROCEDURES"

Our Abpromise to you: Quality guaranteed and expert technical support

- Replacement or refund for products not performing as stated on the datasheet
- Valid for 12 months from date of delivery
- Response to your inquiry within 24 hours
- We provide support in Chinese, English, French, German, Japanese and Spanish
- Extensive multi-media technical resources to help you
- We investigate all quality concerns to ensure our products perform to the highest standards

If the product does not perform as described on this datasheet, we will offer a refund or replacement. For full details of the Abpromise, please visit <https://www.abcam.co.jp/abpromise> or contact our technical team.

Terms and conditions

- Guarantee only valid for products bought direct from Abcam or one of our authorized distributors