


Anti-ACD antibody ab112050

[1 References](#) [画像数 2](#)

製品の概要

製品名	Anti-ACD antibody
製品の詳細	Rabbit polyclonal to ACD
由来種	Rabbit
アプリケーション	適用あり: WB, IP
種交差性	交差種: Human 交差が予測される動物種: Rat, Chimpanzee, Rhesus monkey, Gorilla, Chinese hamster, Orangutan 
免疫原	Synthetic peptide corresponding to Human ACD aa 150-200. (GeneID 65057) Database link: NP_001075955.1
ポジティブ・コントロール	HeLa and Jurkat whole cell lysate
特記事項	<p>The Life Science industry has been in the grips of a reproducibility crisis for a number of years. Abcam is leading the way in addressing this with our range of recombinant monoclonal antibodies and knockout edited cell lines for gold-standard validation. Please check that this product meets your needs before purchasing.</p> <p>If you have any questions, special requirements or concerns, please send us an inquiry and/or contact our Support team ahead of purchase. Recommended alternatives for this product can be found below, along with publications, customer reviews and Q&As</p>

製品の特性

製品の状態	Liquid
保存方法	Shipped at 4°C. Upon delivery aliquot and store at -20°C. Avoid freeze / thaw cycles.
バッファー	pH: 7 Preservative: 0.09% Sodium azide Constituent: 99% Tris citrate/phosphate
精製度	pH 7 to 8 Immunogen affinity purified
ポリ/モノ	ポリクローナル
アイソタイプ	IgG

アプリケーション

The Abpromise guarantee Abpromise保証は、次のテスト済みアプリケーションにおけるab112050の使用に適用されます
アプリケーションノートには、推奨の開始希釈率がありますが、適切な希釈率につきましてはご検討ください。

アプリケーション	Abreviews	特記事項
WB		1/2000 - 1/10000. Predicted molecular weight: 58 kDa.
IP		Use at 2-5 µg/mg of lysate.

ターゲット情報

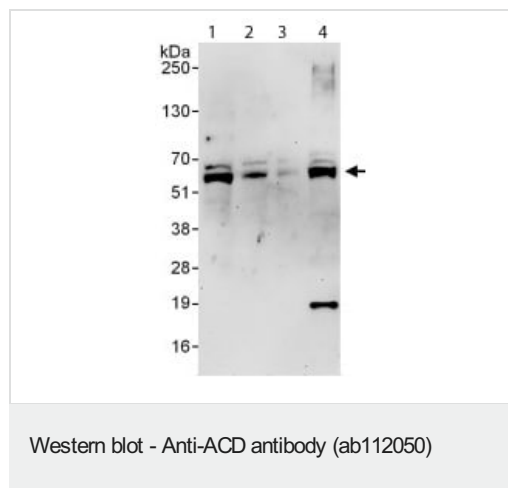
機能

Component of the shelterin complex (telosome) that is involved in the regulation of telomere length and protection. Shelterin associates with arrays of double-stranded TTAGGG repeats added by telomerase and protects chromosome ends; without its protective activity, telomeres are no longer hidden from the DNA damage surveillance and chromosome ends are inappropriately processed by DNA repair pathways. Promotes binding of POT1 to single-stranded telomeric DNA. Modulates the inhibitory effects of POT1 on telomere elongation. The ACD-POT1 heterodimer enhances telomere elongation by increasing telomerase processivity. Plays a role in shelterin complex assembly. May play a role in organogenesis.

細胞内局在

Nucleus. Chromosome > telomere.

画像



All lanes : Anti-ACD antibody (ab112050) at 0.4 µg/ml

Lane 1 : Jurkat whole cell lysate at 50 µg

Lane 2 : Jurkat whole cell lysate at 15 µg

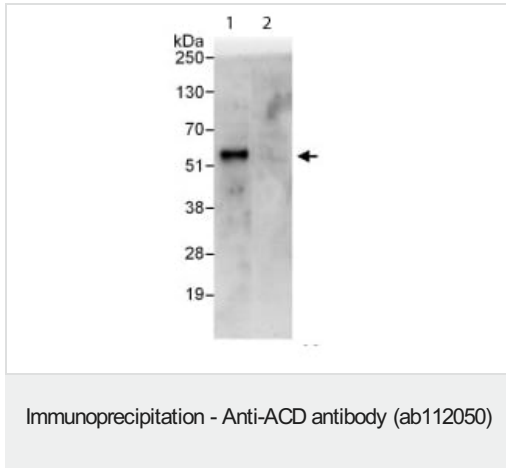
Lane 3 : Jurkat whole cell lysate at 5 µg

Lane 4 : HeLa whole cell lysate at 50 µg

Developed using the ECL technique.

Predicted band size: 58 kDa

Exposure time: 3 minutes



ab112050 at 1 μ g/ml staining PDE3A in HeLa cell lysate immunoprecipitated using ab112050 at 6 μ g/mg lysate (1 mg/IP; 20% of IP loaded/lane). Lane 2: control IgG. Predicted band size : 58 kDa Exposure time: 30 seconds

Please note: All products are "FOR RESEARCH USE ONLY. NOT FOR USE IN DIAGNOSTIC PROCEDURES"

Our Abpromise to you: Quality guaranteed and expert technical support

- Replacement or refund for products not performing as stated on the datasheet
- Valid for 12 months from date of delivery
- Response to your inquiry within 24 hours
- We provide support in Chinese, English, French, German, Japanese and Spanish
- Extensive multi-media technical resources to help you
- We investigate all quality concerns to ensure our products perform to the highest standards

If the product does not perform as described on this datasheet, we will offer a refund or replacement. For full details of the Abpromise, please visit <https://www.abcam.co.jp/abpromise> or contact our technical team.

Terms and conditions

- Guarantee only valid for products bought direct from Abcam or one of our authorized distributors