

Anti-ACAA1/Beta-ketothiolase antibody [2H6BE7] ab110289

4 References **画像数 4**

製品の概要

製品名	Anti-ACAA1/Beta-ketothiolase antibody [2H6BE7]
製品の詳細	Mouse monoclonal [2H6BE7] to ACAA1/Beta-ketothiolase
由来種	Mouse
アプリケーション	適用あり: ICC, Flow Cyt, IP, WB
種交差性	交差種: Mouse, Rat, Human
免疫原	Tissue, cells or virus. This information is considered to be commercially sensitive.
ポジティブ・コントロール	HepG2,HL-60 cells, human liver tissue, rat liver tissue and mouse liver tissue.
特記事項	<p>This antibody clone is manufactured by Abcam. If you require a custom buffer formulation or conjugation for your experiments, please contact orders@abcam.com.</p> <p>The Life Science industry has been in the grips of a reproducibility crisis for a number of years. Abcam is leading the way in addressing this with our range of recombinant monoclonal antibodies and knockout edited cell lines for gold-standard validation. Please check that this product meets your needs before purchasing.</p> <p>If you have any questions, special requirements or concerns, please send us an inquiry and/or contact our Support team ahead of purchase. Recommended alternatives for this product can be found below, along with publications, customer reviews and Q&As</p> <p>Product was previously marketed under the MitoSciences sub-brand.</p>

製品の特性

製品の状態	Liquid
保存方法	Shipped at 4°C. Store at +4°C. Do Not Freeze.
バッファー	<p>pH: 7.5</p> <p>Preservative: 0.02% Sodium azide</p> <p>Constituent: HEPES buffered saline</p>
精製度	Ammonium Sulphate Precipitation
特記事項(精製)	Purity near homogeneity as judge by SDS-PAGE. The antibody was produced in-vitro using hybridomas grown in serum-free medium and then purified by biochemical fractionation.
ポリ/モノ	モノクローナル

クローン名	2H6BE7
アイソタイプ	IgG1
軽鎖の種類	kappa

アプリケーション

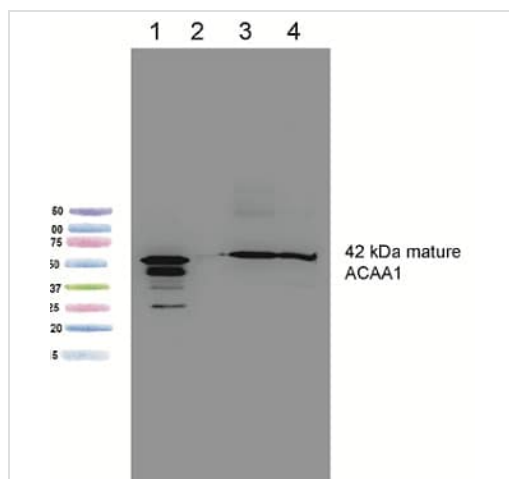
The Abpromise guarantee **Abpromise保証は、**次のテスト済みアプリケーションにおけるab110289の使用に適用されます
 アプリケーションノートには、推奨の開始希釈率がありますが、適切な希釈率につきましてはご検討ください。

アプリケーション	Abreviews	特記事項
ICC		Use a concentration of 5 µg/ml. Heat-induced antigen retrieval improves signal
Flow Cyt		Use a concentration of 1 µg/ml. ab170190 - Mouse monoclonal IgG1, is suitable for use as an isotype control with this antibody.
IP		Use a concentration of 5 µg/ml.
WB		Use a concentration of 1 µg/ml. Predicted molecular weight: 44 kDa.

ターゲット情報

パスウェイ	Lipid metabolism; fatty acid metabolism.
配列類似性	Belongs to the thiolase family.
細胞内局在	Peroxisome.

画像



Western blot - Anti-ACAA1/Beta-ketothiolase antibody [2H6BE7] (ab110289)

All lanes : Anti-ACAA1/Beta-ketothiolase antibody [2H6BE7] (ab110289) at 1 µg/ml

Lane 1 : Human liver

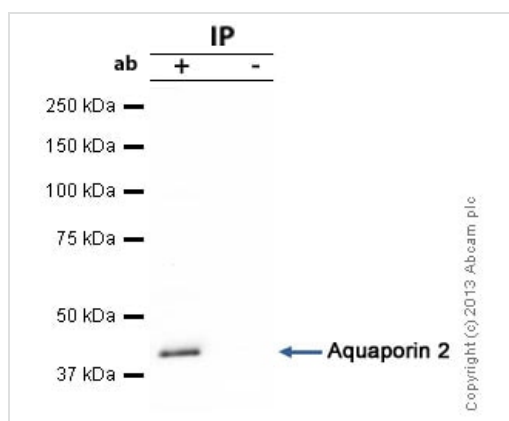
Lane 2 : HepG2

Lane 3 : Rat liver

Lane 4 : Mouse liver

Lysates/proteins at 10 µg per lane.

Predicted band size: 44 kDa



Immunoprecipitation - Anti-ACAA1/Beta-ketothiolase antibody [2H6BE7] (ab110289)

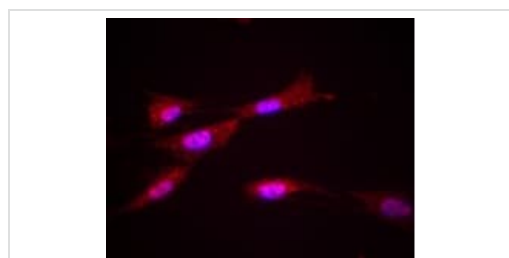
ACAA1/Beta-ketothiolase was immunoprecipitated using 0.5mg Mouse Liver tissue lysate, 5µg of Mouse monoclonal to ACAA1/Beta-ketothiolase and 50µl of protein G magnetic beads (+). No antibody was added to the control (-).

The antibody was incubated under agitation with Protein G beads for 10min, Mouse Liver tissue lysate lysate diluted in RIPA buffer was added to each sample and incubated for a further 10min under agitation.

Proteins were eluted by addition of 40µl SDS loading buffer and incubated for 10min at 70°C; 10µl of each sample was separated on a SDS PAGE gel, transferred to a nitrocellulose membrane, blocked with 5% BSA and probed with ab110289.

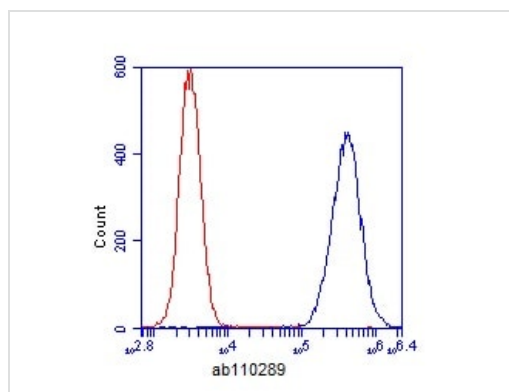
Secondary: Goat polyclonal to mouse IgG light chain specific (HRP) at 1/20,000 dilution.

Band: 44kDa; ACAA1/Beta-ketothiolase



Immunocytochemistry - Anti-ACAA1/Beta-ketothiolase antibody [2H6BE7] (ab110289)

ab110289, at 5 µg/mL, staining ACAA1/Beta-ketothiolase in Human HepG2 cells. DAPI was used to stain the cell nuclei (blue).



ab110289, at 1 µg/mL, staining ACAA1/Beta-ketothiolase in HL-60 cells (blue) or using an isotype control (red).

Flow Cytometry - Anti-ACAA1/Beta-ketothiolase antibody [2H6BE7] (ab110289)

Please note: All products are "FOR RESEARCH USE ONLY. NOT FOR USE IN DIAGNOSTIC PROCEDURES"

Our Abpromise to you: Quality guaranteed and expert technical support

- Replacement or refund for products not performing as stated on the datasheet
- Valid for 12 months from date of delivery
- Response to your inquiry within 24 hours
- We provide support in Chinese, English, French, German, Japanese and Spanish
- Extensive multi-media technical resources to help you
- We investigate all quality concerns to ensure our products perform to the highest standards

If the product does not perform as described on this datasheet, we will offer a refund or replacement. For full details of the Abpromise, please visit <https://www.abcam.co.jp/abpromise> or contact our technical team.

Terms and conditions

- Guarantee only valid for products bought direct from Abcam or one of our authorized distributors