


Anti-ABIN3 antibody ab113748

[2 References](#) [画像数 2](#)

製品の概要

製品名	Anti-ABIN3 antibody
製品の詳細	Rabbit polyclonal to ABIN3
由来種	Rabbit
アプリケーション	適用あり: WB, IHC-P
種交差性	交差種: Human 交差が予測される動物種: Mouse 
免疫原	Synthetic peptide corresponding to Human ABIN3 (C terminal) conjugated to keyhole limpet haemocyanin. Database link: Q96KP6
ポジティブ・コントロール	IHC-P: Human adrenal tissue WB: Human spleen tissue lysate
特記事項	<p>The Life Science industry has been in the grips of a reproducibility crisis for a number of years. Abcam is leading the way in addressing this with our range of recombinant monoclonal antibodies and knockout edited cell lines for gold-standard validation. Please check that this product meets your needs before purchasing.</p> <p>If you have any questions, special requirements or concerns, please send us an inquiry and/or contact our Support team ahead of purchase. Recommended alternatives for this product can be found below, along with publications, customer reviews and Q&As</p>

製品の特性

製品の状態	Liquid
保存方法	Shipped at 4°C. Store at +4°C short term (1-2 weeks). Store at -20°C or -80°C. Avoid freeze / thaw cycle.
バッファー	pH: 7.4 Preservative: 0.02% Sodium azide Constituent: 99% PBS
精製度	Immunogen affinity purified
ポリ/モノ	ポリクローナル
アイソタイプ	IgG

アプリケーション

The Abpromise guarantee Abpromise保証は、次のテスト済みアプリケーションにおけるab113748の使用に適用されます
アプリケーションノートには、推奨の開始希釈率がありますが、適切な希釈率につきましてはご検討ください。

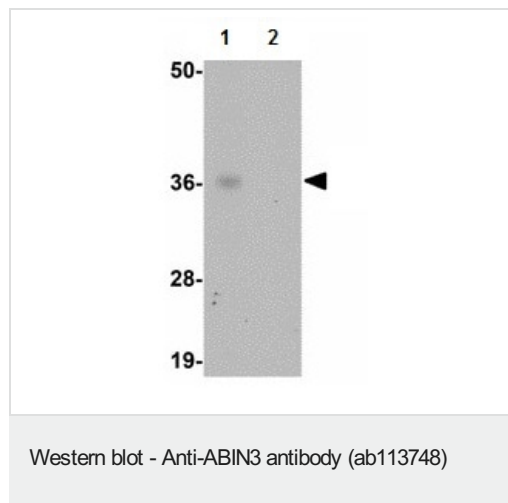
アプリケーション	Abreviews	特記事項
WB		Use a concentration of 1 - 2 µg/ml. Predicted molecular weight: 38 kDa.
IHC-P		Use a concentration of 5 µg/ml.

ターゲット情報

関連性 ABIN-3 is a member of the A20-binding inhibitor of NF-kappaB activation (ABIN) protein family. Similar to the previously characterized human ABINs (ABIN-1 and ABIN-2), ABIN-3 can bind to A20 and inhibit NF-kappaB activation. In contrast, mouse ABIN-3 is incapable of inhibiting NF-kappaB activation by proinflammatory stimuli because the protein lacks a complete ABIN homology domain, which is required for the functional activity of human ABIN-3.

細胞内局在 Cytoplasmic and Nuclear (based on other ABIN family members).

画像

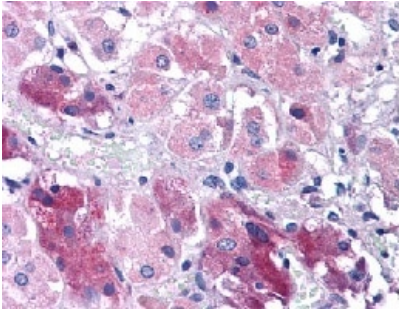


All lanes : Anti-ABIN3 antibody (ab113748) at 1 µg/ml

Lane 1 : Human spleen tissue lysate

Lane 2 : Human spleen tissue lysate with blocking peptide

Predicted band size: 38 kDa



ab113748, at 5 µg/ml, staining ABIN3 in formalin fixed, paraffin embedded, Human adrenal tissue by Immunohistochemistry

Immunohistochemistry (Formalin/PFA-fixed paraffin-embedded sections) - Anti-ABIN3 antibody (ab113748)

Please note: All products are "FOR RESEARCH USE ONLY. NOT FOR USE IN DIAGNOSTIC PROCEDURES"

Our Abpromise to you: Quality guaranteed and expert technical support

- Replacement or refund for products not performing as stated on the datasheet
- Valid for 12 months from date of delivery
- Response to your inquiry within 24 hours
- We provide support in Chinese, English, French, German, Japanese and Spanish
- Extensive multi-media technical resources to help you
- We investigate all quality concerns to ensure our products perform to the highest standards

If the product does not perform as described on this datasheet, we will offer a refund or replacement. For full details of the Abpromise, please visit <https://www.abcam.co.jp/abpromise> or contact our technical team.

Terms and conditions

- Guarantee only valid for products bought direct from Abcam or one of our authorized distributors