

Anti-ABHD6 antibody ab74681

★★★★★ [2 Abreviews](#) [1 References](#) [画像数 2](#)

製品の概要

製品名	Anti-ABHD6 antibody
製品の詳細	Rabbit polyclonal to ABHD6
由来種	Rabbit
アプリケーション	適用あり: WB, ICC/IF
種交差性	交差種: Human 交差が予測される動物種: Mouse, Rat 
免疫原	Synthetic peptide corresponding to Human ABHD6 (internal sequence). Database link: Q9BV23
ポジティブ・コントロール	COLO cell extracts and A549 cells.
特記事項	<p>The Life Science industry has been in the grips of a reproducibility crisis for a number of years. Abcam is leading the way in addressing this with our range of recombinant monoclonal antibodies and knockout edited cell lines for gold-standard validation. Please check that this product meets your needs before purchasing.</p> <p>If you have any questions, special requirements or concerns, please send us an inquiry and/or contact our Support team ahead of purchase. Recommended alternatives for this product can be found below, along with publications, customer reviews and Q&As</p>

製品の特性

製品の状態	Liquid
保存方法	Shipped at 4°C. Upon delivery aliquot and store at -20°C. Avoid repeated freeze / thaw cycles.
バッファー	pH: 7.40 Preservative: 0.02% Sodium azide Constituents: 50% Glycerol (glycerin, glycerine), 0.87% Sodium chloride, PBS
精製度	Without Mg ²⁺ and Ca ²⁺
ポリ/モノ	Immunogen affinity purified
アイソタイプ	ポリクローナル
	IgG

アプリケーション

The Abpromise guarantee **Abpromise保証は、** 次のテスト済みアプリケーションにおけるab74681の使用に適用されます
アプリケーションノートには、推奨の開始希釈率がありますが、適切な希釈率につきましてはご検討ください。

アプリケーション	Abreviews	特記事項
WB		1/500 - 1/1000. Detects a band of approximately 39 kDa (predicted molecular weight: 39 kDa).
ICC/IF		1/500 - 1/1000.

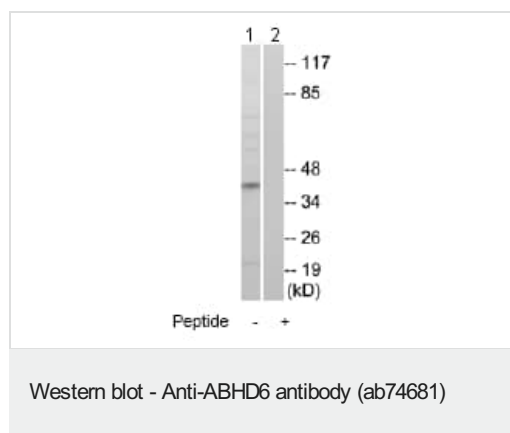
ターゲット情報

関連性	ABHD6 belongs to the alpha/beta hydrolase superfamily. It is highly expressed in mammalian brain and catalyzes the hydrolysis of the endocannabinoid 2-arachidonoyl glycerol (2-AG).
細胞内局在	Membrane; Single-pass type II membrane protein

画像



ab74681 at 1/500-1/1000 dilution staining ABHD6 in A549 cells by Immunofluorescence, in the absence (-) or presence (+) of the immunising peptide.



All lanes : Anti-ABHD6 antibody (ab74681) at 1/500 dilution

Lane 1 : COLO cell extracts

Lane 2 : COLO cell extracts with immunising peptide at 10 µg

Lysates/proteins at 30 µg per lane.

Predicted band size: 39 kDa

Observed band size: 39 kDa

Please note: All products are "FOR RESEARCH USE ONLY. NOT FOR USE IN DIAGNOSTIC PROCEDURES"

Our Abpromise to you: Quality guaranteed and expert technical support

- Replacement or refund for products not performing as stated on the datasheet
- Valid for 12 months from date of delivery
- Response to your inquiry within 24 hours

- We provide support in Chinese, English, French, German, Japanese and Spanish
- Extensive multi-media technical resources to help you
- We investigate all quality concerns to ensure our products perform to the highest standards

If the product does not perform as described on this datasheet, we will offer a refund or replacement. For full details of the Abpromise, please visit <https://www.abcam.co.jp/abpromise> or contact our technical team.

Terms and conditions

- Guarantee only valid for products bought direct from Abcam or one of our authorized distributors