

Anti-Abhd5/CGI-58 antibody ab73551

3 References [画像数 2](#)

製品の概要

製品名	Anti-Abhd5/CGI-58 antibody
製品の詳細	Rabbit polyclonal to Abhd5/CGI-58
由来種	Rabbit
特異性	From Mar 2024, QC testing of replenishment batches of this polyclonal changed. All tested and expected application and reactive species combinations are still covered by our Abcam product promise. However, we no longer test all applications. For more information on a specific batch, please contact our Scientific Support who will be happy to help.
アプリケーション	適用あり: WB, ICC/IF
種交差性	交差種: Human 交差が予測される動物種: Mouse, Rat, Sheep, Pig, Orangutan 
免疫原	Synthetic peptide. This information is proprietary to Abcam and/or its suppliers.
特記事項	<p>The Life Science industry has been in the grips of a reproducibility crisis for a number of years. Abcam is leading the way in addressing this with our range of recombinant monoclonal antibodies and knockout edited cell lines for gold-standard validation. Please check that this product meets your needs before purchasing.</p> <p>If you have any questions, special requirements or concerns, please send us an inquiry and/or contact our Support team ahead of purchase. Recommended alternatives for this product can be found below, along with publications, customer reviews and Q&As</p>

製品の特性

製品の状態	Liquid
保存方法	Shipped at 4°C. Store at +4°C short term (1-2 weeks). Upon delivery aliquot. Store at -20°C or -80°C. Avoid freeze / thaw cycle.
バッファー	pH: 7.40 Preservative: 0.02% Sodium azide Constituent: PBS Batches of this product that have a concentration < 1mg/ml may have BSA added as a stabilising agent. If you would like information about the formulation of a specific lot, please contact our scientific support team who will be happy to help.

精製度	Immunogen affinity purified
ポリ/モノ	ポリクローナル
アイソタイプ	IgG

アプリケーション

The Abpromise guarantee **Abpromise保証は、次のテスト済みアプリケーションにおけるab73551の使用に適用されます**
 アプリケーションノートには、推奨の開始希釈率がありますが、適切な希釈率につきましてはご検討ください。

アプリケーション	Abreviews	特記事項
WB		Use a concentration of 1 µg/ml. Detects a band of approximately 42 kDa (predicted molecular weight: 39 kDa).
ICC/IF		Use a concentration of 10 µg/ml.

ターゲット情報

機能	Lysophosphatidic acid acyltransferase which functions in phosphatidic acid biosynthesis. May regulate the cellular storage of triacylglycerol through activation of the phospholipase PNPLA2. Involved in keratinocyte differentiation.
組織特異性	Widely expressed in various tissues, including lymphocytes, liver, skeletal muscle and brain. Expressed by upper epidermal layers and dermal fibroblasts in skin, hepatocytes and neurons (at protein level).
関連疾患	Defects in ABHD5 are the cause of Chanarin-Dorfman syndrome (CDS) [MIM:275630]; also called triglyceride storage disease with impaired long-chain fatty acid oxidation or neutral lipid storage disease with ichthyosis. CDS is an autosomal recessive inborn error of lipid metabolism with multisystemic accumulation of triglycerides although plasma concentrations are normal. Clinical characteristics are congenital generalized ichthyosis, vacuolated leukocytes, hepatomegaly, myopathy, cataracts, neurosensory hearing loss and developmental delay. The disorder presents at birth with generalized, fine, white scaling of the skin and a variable degree of erythema resembling non-bullous congenital ichthyosiform erythroderma.
配列類似性	Belongs to the peptidase S33 family. ABHD4/ABHD5 subfamily.
発生段階	Detected in fetal epidermis from 49 to 135 days estimated gestational age (at protein level).
ドメイン	The HXXXXD motif is essential for acyltransferase activity and may constitute the binding site for the phosphate moiety of the glycerol-3-phosphate.
細胞内局在	Cytoplasm. Lipid droplet. Colocalized with PLIN and ADRP on the surface of lipid droplets. The localization is dependent upon the metabolic status of the adipocytes and the activity of PKA.

画像



Western blot - Anti-Abhd5/CGI-58 antibody (ab73551)

All lanes : Anti-Abhd5/CGI-58 antibody (ab73551) at 1 µg/ml

Lane 1 : HeLa (Human epithelial carcinoma cell line) Whole Cell Lysate

Lane 2 : A431 (Human epithelial carcinoma cell line) Whole Cell Lysate

Lane 3 : MOLT4 (Human acute lymphoblastic leukemia cell line) Whole Cell Lysate

Lane 4 : Saos 2 (Human epithelial-like osteosarcoma cell line) Whole Cell Lysate

Lysates/proteins at 10 µg per lane.

Secondary

All lanes : Goat polyclonal to Rabbit IgG - H&L - Pre-Adsorbed (HRP) at 1/3000 dilution

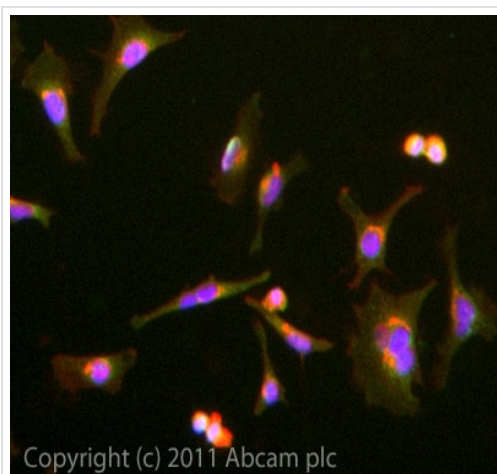
Developed using the ECL technique.

Performed under reducing conditions.

Predicted band size: 39 kDa

Observed band size: 42 kDa

Exposure time: 4 minutes



Immunocytochemistry/ Immunofluorescence - Anti-Abhd5/CGI-58 antibody (ab73551)

ICC/IF image of ab73551 stained MCF7 cells. The cells were 4% PFA fixed (10 min) and then incubated in 1%BSA / 10% normal goat serum / 0.3M glycine in 0.1% PBS-Tween for 1h to permeabilise the cells and block non-specific protein-protein interactions. The cells were then incubated with the antibody (ab73551, 10µg/ml) overnight at +4°C. The secondary antibody (green) was [ab96899](#) Dylight 488 goat anti-rabbit IgG (H+L) used at a 1/250 dilution for 1h. Alexa Fluor® 594 WGA was used to label plasma membranes (red) at a 1/200 dilution for 1h. DAPI was used to stain the cell nuclei (blue) at a concentration of 1.43µM.

Please note: All products are "FOR RESEARCH USE ONLY. NOT FOR USE IN DIAGNOSTIC PROCEDURES"

Our Abpromise to you: Quality guaranteed and expert technical support

- Replacement or refund for products not performing as stated on the datasheet
- Valid for 12 months from date of delivery
- Response to your inquiry within 24 hours
- We provide support in Chinese, English, French, German, Japanese and Spanish
- Extensive multi-media technical resources to help you
- We investigate all quality concerns to ensure our products perform to the highest standards

If the product does not perform as described on this datasheet, we will offer a refund or replacement. For full details of the Abpromise, please visit <https://www.abcam.co.jp/abpromise> or contact our technical team.

Terms and conditions

- Guarantee only valid for products bought direct from Abcam or one of our authorized distributors